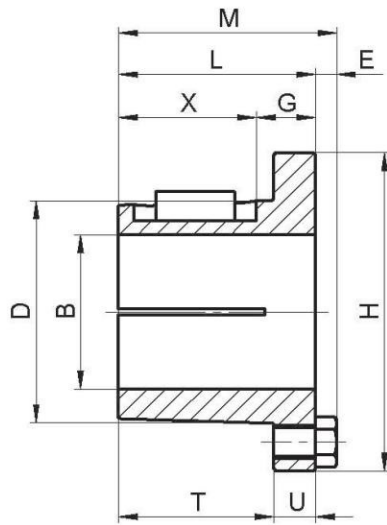


- ◆ Close Grain Cast Iron
- ◆ Accurately Machined
- ◆ Statically Balanced

Standard Keyseats

Table No.1



Bore Range	Keyseat
1/2" — 9/16"	1/8" x 1/16"
5/8 — 7/8	3/16 x 3/32
15/16 — 1 1/4	1/4 x 1/8
1 5/16 — 1 3/8	5/16 x 5/32
1 7/16 — 1 3/4	3/8 x 3/16
1 13/16 — 2 1/4	1/2 x 1/4
2 5/16 — 2 3/4	5/8 x 5/16
2 13/16 — 3 1/4	3/4 x 3/8
3 3/8 — 3 3/4	7/8 x 7/16
3 7/8 — 4 1/2	1 x 1/2
4 5/8 — 5 1/2	1 1/4 x 5/8

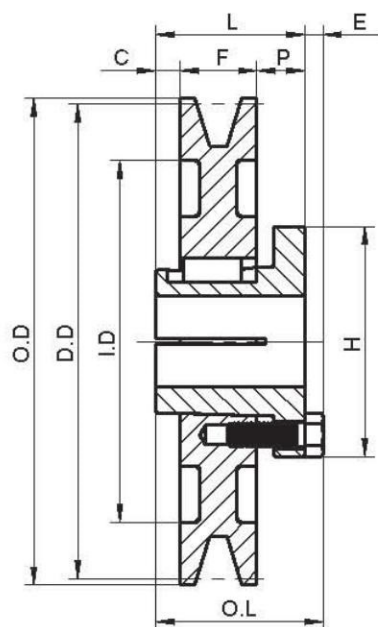
1 3/8 Bore Bushing also available with 3/8 x 3/16" Keyseat.

Table No.2

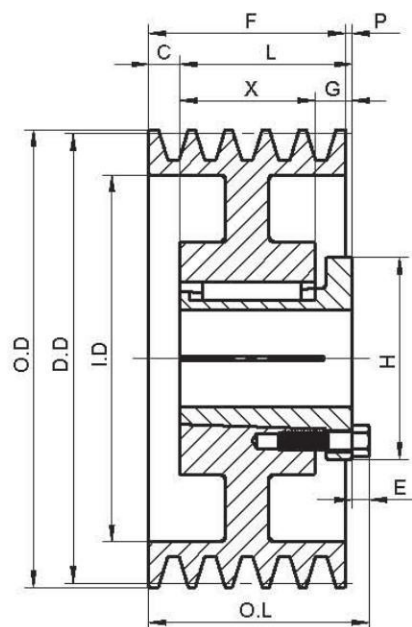
Bushing Dimensions

Part No.	Dimensions									Bore Range	Wt. Lbs
	M	L	G	X	E	T	U	D	H		
P1	2 3/16"	1 15/16"	5/8"	1 5/16"	1/4"	1 17/32"	13/32"	1 15/16"	3"	1/2" — 1 3/4"	1 1/4
P2	3 3/16	2 15/16	5/8	2 5/16	1/4	2 17/32	13/32	1 15/16	3	3/4 — 1 3/4	1 1/2
Q1	2 25/32	2 1/2	3/4	1 3/4	9/32	1 31/32"	17/32	2 7/8"	4 1/8	9/16—2 11/16	3 1/2
Q2	3 25/32	3 1/2	3/4	2 3/4	9/32	2 31/32	17/32	2 7/8	4 1/8	1—2 11/16	4 1/2
Q3	5 9/32	5	3/4	4 1/4	9/32	4 15/32	17/32	2 7/8	4 1/8	1 3/8 — 2 1/2	5 1/2
R1	3 5/32	2 7/8	7/8	2	9/32	2 1/4	5/8	4	5 3/8	1 1/8—3 3/4	7 1/2
R2	5 5/32	4 7/8	7/8	4	9/32	4 1/4	5/8	4	5 3/8	1 3/8—3 5/8	11
S1	4 3/4	4 3/8	1 1/16	3 5/16	3/8	3 5/8	3/4	4 5/8	6 3/8	1 11/16—4 1/4	13 1/2
S2	7 1/8	6 3/4	1 1/16	5 11/16	3/8	6	3/4	4 5/8	6 3/8	1 7/8 — 4 3/16	19
U0	5 23/32	5 1/4	1 1/2	3 3/4	15/32	4 3/16	1 1/16	6	8 3/8	2 3/8—3 3/16	30
U0	5 13/32	4 15/16	1 3/16	3 3/4	15/32	4 3/16	3/4	6	8 3/8	3 1/4—5 1/2	27

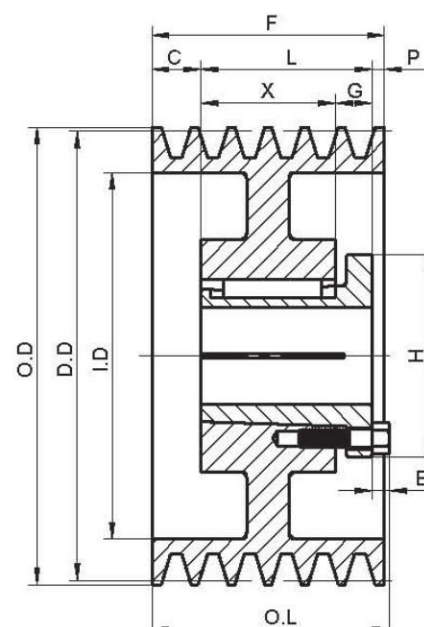
TYPE 10



TYPE 13



TYPE 15



TYPE 16

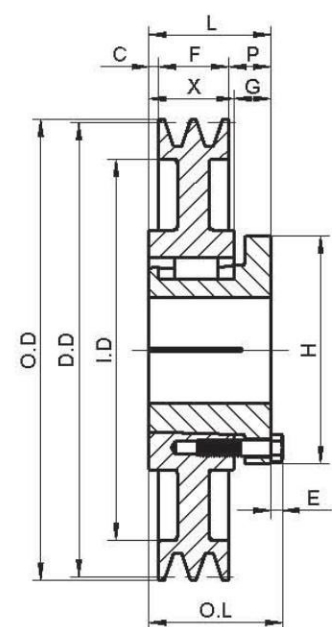


Table No.3 Specifications—Stock "C" Sheaves

Part No.	Bushing	Type	DIAMETERS											Wt. Less Bush.
			Datum "C"	Outside	Inside	O.L.	L	P	C	H	G	X	E	
1 GROOVE,F =1 1/4"														
1C56P	P1	10	5.6"	6.00"	—	2 3/16"	1 15/16"	5/8"	1/16"	3"	—	—	1/4"	6.0
1C60Q	Q1	10	6.0	6.40	—	2 25/32	2 1/2	3/4	1/2	4 1/8	—	—	9/32	6.1
2 GROOVES,F =2 1/4"														
2C56P	P1	13-Web	5.60	6.00	3 13/16"	2 1/2"	1 15/16"	0	5/16"	3"	5/8"	1 5/16"	1/4"	8.4
2C60Q	Q1	13-Web	6.00	6.40	4 1/4	2 25/32	2 1/2	1/4	0	4 1/8	3/4	1 3/4	9/32	9.5
2C140R	R1	13-Arm	14.00	14.40	12 1/4	3 9/32	2 7/8	3/4	1/8	5 3/8	7/8	2	9/32	33.5
2C180R	R1	13-Arm	18.00	18.40	16 1/4	3 9/32	2 7/8	3/4	1/8	5 3/8	7/8	2	9/32	42.3
2C270R	R1	13-Arm	27.00	27.40	25 1/4	3 9/32	2 7/8	3/4	1/8	5 3/8	7/8	2	9/32	77.0
2C300R	R1	13-Arm	30.00	30.40	28 1/8	3 9/32	2 7/8	3/4	1/8	5 3/8	7/8	2	9/32	93.0
2C360R	R1	13-Arm	36.00	36.40	34 1/8	3 9/32	2 7/8	3/4	1/8	5 3/8	7/8	2	9/32	117.0
2C440R	R1	13-Arm	44.00	44.40	42 1/8	3 9/32	2 7/8	3/4	1/8	5 3/8	7/8	2	9/32	164.0
3 GROOVES,F =3 1/4"														
3C50Q	Q1	13-Sol	5.0	5.4	—	4 9/32"	2 1/2"	3/4"	1 1/2"	4 1/8"	3/4"	1 3/4"	9/32"	8.4
3C56P	P2	13-Web	5.60	6.00	3 13/16	3 1/2	2 15/16	0	5/16	3	5/8	2 5/16	1/4	12.9
3C60Q	Q1	13-Web	6.00	6.40	4 1/4	3 17/32	2 1/2	0	3/4	4 1/8	3/4	1 3/4	9/32	14.0
3C90R	R1	13-Web	9.00	9.40	7 3/16	3 25/32	2 7/8	1/4	5/8	5 3/8	7/8	2	9/32	27.3
3C92R	R1	13-Web	9.20	9.60	7 3/8	3 25/32	2 7/8	1/4	5/8	5 3/8	7/8	2	9/32	27.5
3C94R	R1	13-Web	9.40	9.80	7 5/8	3 25/32	2 7/8	1/4	5/8	5 3/8	7/8	2	9/32	26.9
3C96R	R1	13-Web	9.60	10.00	7 13/16	3 25/32	2 7/8	1/4	5/8	5 3/8	7/8	2	9/32	28.4
3C98R	R1	13-Web	9.80	10.20	8	3 25/32	2 7/8	1/4	5/8	5 3/8	7/8	2	9/32	29.3
3C100R	R1	13-Web	10.00	10.40	8 3/16	3 25/32	2 7/8	1/4	5/8	5 3/8	7/8	2	9/32	29.0
3C102R	R1	13-Web	10.20	10.60	8 3/8	3 25/32	2 7/8	1/4	5/8	5 3/8	7/8	2	9/32	31.4
3C106R	R1	13-Web	10.60	11.00	8 13/16	3 25/32	2 7/8	1/4	5/8	5 3/8	7/8	2	9/32	31.8
3C110R	R1	13-Web	11.00	11.40	9 1/4	3 25/32	2 7/8	1/4	5/8	5 3/8	7/8	2	9/32	29.3
3C120R	R1	13-Web	12.00	12.40	10 1/4	3 25/32	2 7/8	1/4	5/8	5 3/8	7/8	2	9/32	36.9
3C130R	R1	13-Arm	13.00	13.40	11 1/4	3 25/32	2 7/8	1/4	5/8	5 3/8	7/8	2	9/32	34.8
3C140R	R1	13-Arm	14.00	14.40	12 1/4	3 25/32	2 7/8	1/4	5/8	5 3/8	7/8	2	9/32	39.4
3C150R	R1	13-Arm	15.00	15.40	13 1/4	3 25/32	2 7/8	1/4	5/8	5 3/8	7/8	2	9/32	43.8
3C160R	R1	13-Arm	16.00	16.40	14 1/4	3 25/32	2 7/8	1/4	5/8	5 3/8	7/8	2	9/32	47.0
3C180R	R1	13-Arm	18.00	18.40	16 1/4	3 25/32	2 7/8	1/4	5/8	5 3/8	7/8	2	9/32	51.5
3C200R	R1	13-Arm	20.00	20.40	18 1/4	3 25/32	2 7/8	1/4	5/8	5 3/8	7/8	2	9/32	58.0
3C240R	R1	13-Arm	24.00	24.40	22 1/4	3 25/32	2 7/8	1/4	5/8	5 3/8	7/8	2	9/32	71.0
3C270R	R1	13-Arm	27.00	27.40	25 1/4	3 25/32	2 7/8	1/4	5/8	5 3/8	7/8	2	9/32	92.0
3C300R	R1	13-Arm	30.00	30.40	28 1/8	3 25/32	2 7/8	1/4	5/8	5 3/8	7/8	2	9/32	110.0
3C360R	R1	13-Arm	36.00	36.40	34 1/8	3 25/32	2 7/8	1/4	5/8	5 3/8	7/8	2	9/32	135.0
3C440R	R1	13-Arm	44.00	44.40	42 1/8	3 25/32	2 7/8	1/4	5/8	5 3/8	7/8	2	9/32	196.0
3C500R	R1	13-Arm	50.00	50.40	48 1/8	3 25/32	2 7/8	1/4	5/8	5 3/8	7/8	2	9/32	213.0
3C500S	S1	16-Arm	50.00	50.40	48 1/8	4 3/4	4 3/8	1 3/32	1/32	6 3/8	1 11/16	3 5/16	3/8	224.0
4 GROOVES, F =4 1/4"														
4C50Q	Q2	13-Sol	5.0	5.40	—	5 9/32	3 1/2"	3/4"	1 1/2"	4 1/8"	3/4"	2 3/4"	9/32"	9.8
4C56P	P2	13-Web	5.6	6.00	3 13/16	4 1/2	2 15/16	0	1 5/16	3	5/8	2 5/16	1/4	15.4
4C60Q	Q2	13-Web	6.0	6.40	4 1/4	4 17/32	3 1/2	0	3/4	4 1/8	3/4	2 3/4	9/32	15.7
4C70Q	Q2	13-Web	7.0	7.4	4 1/4	4 17/32	3 1/2	0	3/4	4 1/8	3/4	2 3/4	9/32	22
4C90R	R1	15-Web	9.0	9.40	7 3/16	4 9/32	2 7/8	1/4	1 1/8	5 3/8	7/8	2	9/32	30.0
4C92R	R1	15-Web	9.2	9.60	7 3/8	4 9/32	2 7/8	1/4	1 1/8	5 3/8	7/8	2	9/32	31.6
4C94R	R1	15-Web	9.4	9.80	7 5/8	4 9/32	2 7/8	1/4	1 1/8	5 3/8	7/8	2	9/32	31.6
4C96R	R1	15-Web	9.6	10.00	7 13/16	4 9/32	2 7/8	1/4	1 1/8	5 3/8	7/8	2	9/32	31.1
4C98R	R1	15-Web	9.8	10.20	8	4 9/32	2 7/8	1/4	1 1/8	5 3/8	7/8	2	9/32	33.4
4C100R	R1	15-Web	10.0	10.40	8 3/16	4 9/32	2 7/8	1/4	1 1/8	5 3/8	7/8	2	9/32	34.1
4C102R	R1	15-Web	10.2	10.60	8 3/8	4 9/32	2 7/8	1/4	1 1/8	5 3/8	7/8	2	9/32	36.5
4C106R	R1	15-Web	10.6	11.00	8 13/16	4 9/32	2 7/8	1/4	1 1/8	5 3/8	7/8	2	9/32	36.5
4C110R	R1	15-Web	11.0	11.40	9 1/4	4 9/32	2 7/8	1/4	1 1/8	5 3/8	7/8	2	9/32	33.0

C series



Table No.4

Specifications—Stock "C" Sheaves

Part No.	Bushing	Type	DIAMETERS											Wt. Less Bush.
			Datum "C"	Outside	Inside	O.L.	L	P	C	H	G	X	E	
4 GROOVES(Cont.),F =4 1/4"														
4C120R	R1	15-Web	12.0	12.40	10 1/4	4 9/32	2 7/8	1/4	1 1/8	5 3/8	7/8	2	9/32	42.9
4C130R	R1	15-Arm	13.0	13.40	11 1/4	4 9/32	2 7/8	1/4	1 1/8	5 3/8	7/8	2	9/32	40.1
4C140R	R1	15-Arm	14.0	14.40	12 1/4	4 9/32	2 7/8	1/4	1 1/8	5 3/8	7/8	2	9/32	46.6
4C150R	R1	15-Arm	15.0	15.40	13 1/4	4 9/32	2 7/8	1/4	1 1/8	5 3/8	7/8	2	9/32	52.0
4C160R	R1	15-Arm	16.0	16.40	14 1/4	4 9/32	2 7/8	1/4	1 1/8	5 3/8	7/8	2	9/32	55.0
4C180R	R1	15-Arm	18.0	18.40	16 1/4	4 9/32	2 7/8	1/4	1 1/8	5 3/8	7/8	2	9/32	60.0
4C180S	S1	13-Arm	18.0	18.40	16 1/4	5 7/32	4 3/8	19/32	15/32	6 3/8	1 1/16	3 5/16	3/8	92.0
4C200R	R1	15-Arm	20.0	20.40	18 1/4	4 9/32	2 7/8	1/4	1 1/8	5 3/8	7/8	2	9/32	69.0
4C200S	S1	13-Arm	20.0	20.40	18 1/4	5 7/32	4 3/8	19/32	15/32	6 3/8	1 1/16	3 5/16	3/8	103.0
4C240R	R1	15-Arm	24.0	24.40	22 1/4	4 9/32	2 7/8	1/4	1 1/8	5 3/8	7/8	2	9/32	86.0
4C240S	S1	13-Arm	24.0	24.40	22 1/4	5 7/32	4 3/8	19/32	15/32	6 3/8	1 1/16	3 5/16	3/8	120.0
4C270R	R1	15-Arm	27.0	27.40	25 1/4	4 9/32	2 7/8	1/4	1 1/8	5 3/8	7/8	2	9/32	110.0
4C270S	S1	13-Arm	27.0	27.40	25 1/4	5 7/32	4 3/8	19/32	15/32	6 3/8	1 1/16	3 5/16	3/8	123.0
4C300R	R1	15-Arm	30.0	30.40	28 1/8	4 9/32	2 7/8	1/4	1 1/8	5 3/8	7/8	2	9/32	123.0
4C300S	S1	13-Arm	30.0	30.40	28 1/8	5 7/32	4 3/8	19/32	15/32	6 3/8	1 1/16	3 5/16	3/8	142.0
4C360R	R1	15-Arm	36.0	36.40	34 1/8	4 9/32	2 7/8	1/4	1 1/8	5 3/8	7/8	2	9/32	156.0
4C360S	S1	13-Arm	36.0	36.40	34 1/8	5 7/32	4 3/8	19/32	15/32	6 3/8	1 1/16	3 5/16	3/8	183.0
4C440R	R1	15-Arm	44.0	44.40	42 1/8	4 9/32	2 7/8	1/4	1 1/8	5 3/8	7/8	2	9/32	218.0
4C440U	U0	13-Arm	44.0	44.40	42 1/8	5 13/32	4 15/16	15/16	1/4	8 3/8	1 3/16	3 3/4	15/32	241.0
4C500R	R1	15-Arm	50.0	50.40	48 1/8	4 9/32	2 7/8	1/4	1 1/8	5 3/8	7/8	2	9/32	240.0
4C500U	U0	13-Arm	50.0	50.40	48 1/8	5 13/32	4 15/16	15/16	1/4	8 3/8	1 3/16	3 3/4	15/32	283.0
5 GROOVES,F =5 1/4"														
5C90R	R1	15-Web	9.0"	9.40"	7 3/16"	5 1/4"	2 7/8"	3/4"	1 5/8"	5 3/8"	7/8"	2"	9/32"	33.4
5C92R	R1	15-Web	9.2	9.60	7 3/8	5 1/4	2 7/8	3/4	1 5/8	5 3/8	7/8	2	9/32	36.8
5C94R	R1	15-Web	9.4	9.80	7 5/8	5 1/4	2 7/8	3/4	1 5/8	5 3/8	7/8	2	9/32	35.8
5C96R	R1	15-Web	9.6	10.00	7 13/16	5 1/4	2 7/8	3/4	1 5/8	5 3/8	7/8	2	9/32	35.4
5C98R	R1	15-Web	9.8	10.20	8	5 1/4	2 7/8	3/4	1 5/8	5 3/8	7/8	2	9/32	37.6
5C100R	R1	15-Web	10.0	10.40	8 3/16	5 1/4	2 7/8	3/4	1 5/8	5 3/8	7/8	2	9/32	38.9
5C102R	R1	15-Web	10.2	10.60	8 3/8	5 1/4	2 7/8	3/4	1 5/8	5 3/8	7/8	2	9/32	40.6
5C106R	R1	15-Web	10.6	11.00	8 13/16	5 1/4	2 7/8	3/4	1 5/8	5 3/8	7/8	2	9/32	39.0
5C110R	R1	15-Web	11.0	11.40	9 1/4	5 1/4	2 7/8	3/4	1 5/8	5 3/8	7/8	2	9/32	38.8
5C120R	R1	15-Web	12.0	12.40	10 1/4	5 1/4	2 7/8	3/4	1 5/8	5 3/8	7/8	2	9/32	47.5
5C130R	R1	15-Arm	13.0	13.40	11 1/4	5 1/4	2 7/8	3/4	1 5/8	5 3/8	7/8	2	9/32	46.0
5C140R	R1	15-Arm	14.0	14.40	12 1/4	5 1/4	2 7/8	3/4	1 5/8	5 3/8	7/8	2	9/32	52.0
5C150R	R1	15-Arm	15.0	15.40	13 1/4	5 1/4	2 7/8	3/4	1 5/8	5 3/8	7/8	2	9/32	54.0
5C160R	R1	15-Arm	16.0	16.40	14 1/4	5 1/4	2 7/8	3/4	1 5/8	5 3/8	7/8	2	9/32	63.0
5C180R	R1	15-Arm	18.0	18.40	16 1/4	5 1/4	2 7/8	3/4	1 5/8	5 3/8	7/8	2	9/32	69.0
5C180S	S1	13-Arm	18.0	18.40	16 1/4	5 23/32	4 3/8	3/32	31/32	6 3/8	1 1/16	3 5/16	3/8	100
5C200R	R1	15-Arm	20.0	20.40	18 1/4	5 1/4	2 7/8	3/4	5/8	5 3/8	7/8	2	9/32	77.0
5C200S	S1	13-Arm	20.0	20.40	18 1/4	5 23/32	4 3/8	3/32	31/32	6 3/8	1 1/16	3 5/16	3/8	99.0
5C240R	R1	15-Arm	24.0	24.40	22 1/4	5 1/4	2 7/8	3/4	5/8	5 3/8	7/8	2	9/32	110
5C240S	S1	13-Arm	24.0	24.40	22 1/4	5 23/32	4 3/8	3/32	31/32	6 3/8	1 1/16	3 5/16	3/8	129
5C270R	R2	13-Arm	27.0	27.40	25 1/4	5 25/32	4 7/8	1/4	5/8	5 3/8	7/8	4	9/32	131
5C300R	R2	13-Arm	30.0	30.40	28 1/8	5 25/32	4 7/8	1/4	5/8	5 3/8	7/8	4	9/32	150
5C300S	S1	13-Arm	30.0	30.40	28 1/8	5 23/32	4 3/8	3/32	31/32	6 3/8	1 1/16	3 5/16	3/8	160
5C360R	R2	13-Arm	36.0	36.40	34 1/8	5 25/32	4 7/8	1/4	5/8	5 3/8	7/8	4	9/32	194
5C440R	R2	13-Arm	44.0	44.40	42 1/8	5 25/32	4 7/8	1/4	5/8	5 3/8	7/8	4	9/32	243
5C500R	R2	13-Arm	50.0	50.40	48 1/8	5 25/32	4 7/8	1/4	5/8	5 3/8	7/8	4	9/32	273

C series

Table No.5 Specifications—Stock "C" Sheaves

Part No.	Bushing	Type	DIAMETERS											Wt. Less Bush.
			Datum "C"	Outside	Inside	O.L.	L	P	C	H	G	X	E	
6 GROOVES,F =6 1/4"														
6C90R	R2	15-Web	9.0"	9.40"	7 3/16"	6 9/32"	4 7/8"	1/4"	1 1/8"	5 3/8"	7/8"	4"	9/32"	53.0
6C92R	R2	15-Web	9.2	9.60	7 3/8	6 9/32	4 7/8	1/4	1 1/8	5 3/8	7/8	4	9/32	58.0
6C94R	R2	15-Web	9.4	9.80	7 5/8	6 9/32	4 7/8	1/4	1 1/8	5 3/8	7/8	4	9/32	63.5
6C96R	R2	15-Web	9.6	10.00	7 13/16	6 9/32	4 7/8	1/4	1 1/8	5 3/8	7/8	4	9/32	55.0
6C98R	R2	15-Web	9.8	10.20	8	6 9/32	4 7/8	1/4	1 1/8	5 3/8	7/8	4	9/32	65.0
6C100R	R2	15-Web	10.0	10.40	8 3/16	6 9/32	4 7/8	1/4	1 1/8	5 3/8	7/8	4	9/32	62.0
6C102R	R2	15-Web	10.2	10.60	8 3/8	6 9/32	4 7/8	1/4	1 1/8	5 3/8	7/8	4	9/32	68.0
6C106R	R2	15-Web	10.6	11.00	8 13/16	6 9/32	4 7/8	1/4	1 1/8	5 3/8	7/8	4	9/32	55.0
6C110R	R2	15-Web	11.0	11.40	9 1/4	6 9/32	4 7/8	1/4	1 1/8	5 3/8	7/8	4	9/32	51.5
6C120R	R2	15-Web	12.0	12.40	10 1/4	6 9/32	4 7/8	1/4	1 1/8	5 3/8	7/8	4	9/32	64.0
6C130R	R2	15-Arm	13.0	13.40	11 1/4	6 9/32	4 7/8	1/4	1 1/8	5 3/8	7/8	4	9/32	61.0
6C140R	R2	15-Arm	14.0	14.40	12 1/4	6 9/32	4 7/8	1/4	1 1/8	5 3/8	7/8	4	9/32	69.0
6C150R	R2	15-Arm	15.0	15.40	13 1/4	6 9/32	4 7/8	1/4	1 1/8	5 3/8	7/8	4	9/32	68.0
6C160R	R2	15-Arm	16.0	16.40	14 1/4	6 9/32	4 7/8	1/4	1 1/8	5 3/8	7/8	4	9/32	77.0
6C180R	R2	15-Arm	18.0	18.40	16 1/4	6 9/32	4 7/8	1/4	1 1/8	5 3/8	7/8	4	9/32	84.0
6C180S	S1	15-Arm	18.0	18.40	16 1/4	6 1/4	4 3/8	13/32	1 15/32	6 3/8	1 1/16	3 5/16	3/8	107
6C200R	R2	15-Arm	20.0	20.40	18 1/4	6 9/32	4 7/8	1/4	1 1/8	5 3/8	7/8	4	9/32	91.5
6C200S	S1	15-Arm	20.0	20.40	18 1/4	6 1/4	4 3/8	13/32	1 15/32	6 3/8	1 1/16	3 5/16	3/8	127
6C240R	R2	15-Arm	24.0	24.40	22 1/4	6 9/32	4 7/8	1/4	1 1/8	5 3/8	7/8	4	9/32	116
6C240S	S1	15-Arm	24.0	24.40	22 1/4	6 1/4	4 3/8	13/32	1 15/32	6 3/8	1 1/16	3 5/16	3/8	125
6C270R	R2	15-Arm	27.0	27.40	25 1/4	6 9/32	4 7/8	1/4	1 1/8	5 3/8	7/8	4	9/32	144
6C270S	S1	15-Arm	27.0	27.40	25 1/4	6 1/4	4 3/8	13/32	1 15/32	6 3/8	1 1/16	3 5/16	3/8	151
6C300R	R2	15-Arm	30.0	30.40	28 1/8	6 9/32	4 7/8	1/4	1 1/8	5 3/8	7/8	4	9/32	160
6C300U	U0	15-Arm	30.0	30.40	28 1/8	6 1/4	4 15/16	1/16	1 1/4	8 3/8	1 3/16	3 3/4	15/32	191
6C360R	R2	15-Arm	36.0	36.40	34 1/8	6 9/32	4 7/8	1/4	1 1/8	5 3/8	7/8	4	9/32	211
6C360U	U0	15-Arm	36.0	36.40	34 1/8	6 1/4	4 15/16	1/16	1 1/4	8 3/8	1 3/16	3 3/4	15/32	233
6C440R	R2	15-Arm	44.0	44.40	42 1/8	6 9/32	4 7/8	1/4	1 1/8	5 3/8	7/8	4	9/32	286
6C500R	R2	15-Arm	50.0	50.40	48 1/8	6 9/32	4 7/8	1/4	1 1/8	5 3/8	7/8	4	9/32	303
7 GROOVES,F =7 1/4"														
7C70Q	Q3	15-Web	7.0"	7.40"	5 3/8"	7 1/4"	5"	3/4"	1 1/2"	4 1/8"	3/4"	4 1/4"	9/32"	37.5
7C80R	R2	15-Web	8.0	8.40	6 3/8	7 1/4	4 7/8	3/4	1 5/8	5 3/8	7/8	4	9/32	45.6
7C86R	R2	15-Web	8.6	9.00	6 15/16	7 1/4	4 7/8	3/4	1 5/8	5 3/8	7/8	4	9/32	52.8
7C90R	R2	15-Web	9.0	9.40	7 3/16	7 1/4	4 7/8	3/4	1 5/8	5 3/8	7/8	4	9/32	58.0
7C92R	R2	15-Web	9.2	9.60	7 3/8	7 1/4	4 7/8	3/4	1 5/8	5 3/8	7/8	4	9/32	63.0
7C94R	R2	15-Web	9.4	9.80	7 5/8	7 1/4	4 7/8	3/4	1 5/8	5 3/8	7/8	4	9/32	68.0
7C98R	R2	15-Web	9.8	10.20	8	7 1/4	4 7/8	3/4	1 5/8	5 3/8	7/8	4	9/32	73.0
7C100R	R2	15-Web	10.0	10.40	8 3/16	7 1/4	4 7/8	3/4	1 5/8	5 3/8	7/8	4	9/32	71.0
7C102R	R2	15-Web	10.2	10.60	8 3/8	7 1/4	4 7/8	3/4	1 5/8	5 3/8	7/8	4	9/32	76.0
7C106R	R2	15-Web	10.6	11.00	8 13/16	7 1/4	4 7/8	3/4	1 5/8	5 3/8	7/8	4	9/32	71.0
7C110R	R2	15-Web	11.0	11.40	9 1/4	7 1/4	4 7/8	3/4	1 5/8	5 3/8	7/8	4	9/32	68.0
7C120R	R2	15-Web	12.0	12.40	10 1/4	7 1/4	4 7/8	3/4	1 5/8	5 3/8	7/8	4	9/32	67.0
7C130R	R2	15-Arm	13.0	13.40	11 1/4	7 1/4	4 7/8	3/4	1 5/8	5 3/8	7/8	4	9/32	84.0
7C140R	R2	15-Arm	14.0	14.40	12 1/4	7 1/4	4 7/8	3/4	1 5/8	5 3/8	7/8	4	9/32	83.0
7C150R	R2	15-Arm	15.0	15.40	13 1/4	7 1/4	4 7/8	3/4	1 5/8	5 3/8	7/8	4	9/32	86.0
7C160R	R2	15-Arm	16.0	16.40	14 1/4	7 1/4	4 7/8	3/4	1 5/8	5 3/8	7/8	4	9/32	88.0
7C180S	S2	13-Arm	18.0	18.40	16 1/4	7 29/32	6 3/4	9/32	25/32	6 3/8	1 1/16	5 11/16	9/32	137
7C180U	U0	15-Arm	18.0	18.40	16 1/4	7 1/4	4 15/16	9/16	1 3/4	8 3/8	1 3/16	3 3/4	9/32	133
7C200S	S2	13-Arm	20.0	20.40	18 1/4	7 29/32	6 3/4	9/32	25/32	6 3/8	1 1/16	5 11/16	9/32	152
7C200U	U0	15-Arm	20.0	20.40	18 1/4	7 1/4	4 15/16	9/16	1 3/4	8 3/8	1 3/16	3 3/4	9/32	144
7C240S	S2	13-Arm	24.0	24.40	22 1/4	7 29/32	6 3/4	9/32	25/32	6 3/8	1 1/16	5 11/16	9/32	173
7C270S	S2	13-Arm	27.0	27.40	25 1/4	7 29/32	6 3/4	9/32	25/32	6 3/8	1 1/16	5 11/16	9/32	197
7C270U	U0	15-Arm	27.0	27.40	25 1/4	7 1/4	4 15/16	9/16	1 3/4	8 3/8	1 3/16	3 3/4	9/32	196
7C300S	S2	13-Arm	30.0	30.40	28 1/8	7 29/32	6 3/4	9/32	25/32	6 3/8	1 1/16	5 11/16	9/32	220
7C300U	U0	15-Arm	30.0	30.40	28 1/8	7 1/4	4 15/16	9/16	1 3/4	8 3/8	1 3/16	3 3/4	9/32	217
7C360S	S2	13-Arm	36.0	36.40	34 1/8	7 29/32	6 3/4	9/32	25/32	6 3/8	1 1/16	5 11/16	9/32	279
7C440S	S2	13-Arm	44.0	44.40	42 1/8	7 29/32	6 3/4	9/32	25/32	6 3/8	1 1/16	5 11/16	9/32	337
7C500S	S2	13-Arm	50.0	50.40	48 1/8	7 29/32	6 3/4	9/32	25/32	6 3/8	1 1/16	5 11/16	9/32	382

series C



Table No.6

Specifications—Stock "C" Sheaves

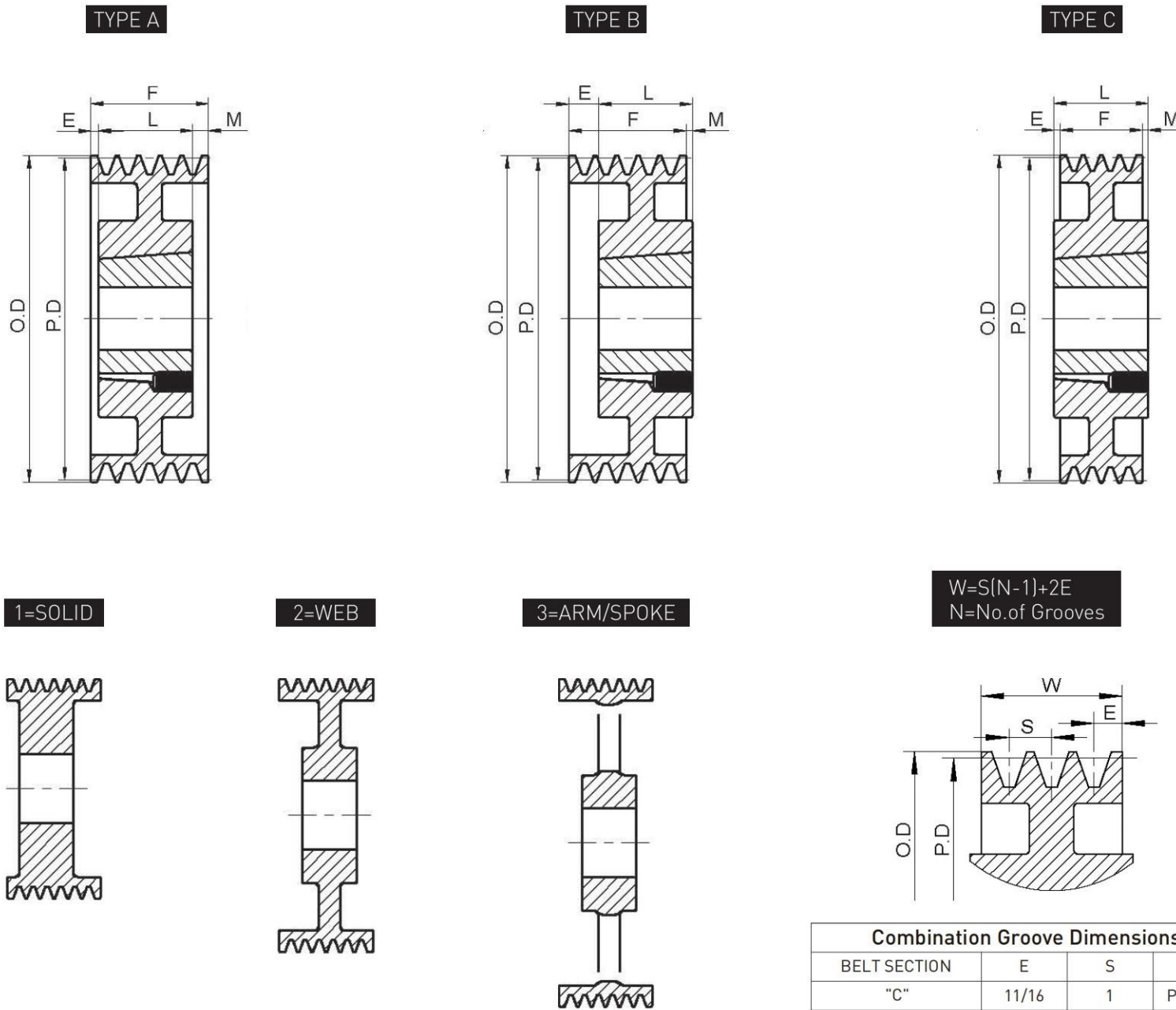
Part No.	Bushing	Type	DIAMETERS											Wt. Less Bush.
			Datum "C"	Outside	Inside	O.L.	L	P	C	H	G	X	E	
8 GROOVES,F =8 1/4"														
8C70Q	Q3	15-Web	7.0"	7.40"	5 3/8"	8 1/4"	5"	1 5/8"	1 5/8"	4 1/8"	3/4"	4 1/4"	9/32"	40
8C80R	R2	15-Web	8	8.40	6 3/8	8 1/4	4 7/8	1 3/4	1 5/8	5 3/8	7/8	4	9/32	49
8C86R	R2	15-Web	8.6	9.00	6 15/16	8 1/4	4 7/8	1 3/4	1 5/8	5 3/8	7/8	4	9/32	57
8C90R	R2	15-Web	9	9.40	7 3/16	8 1/4	4 7/8	1 3/4	1 5/8	5 3/8	7/8	4	9/32	62
8C92R	R2	15-Web	9.2	9.60	7 3/8	8 1/4	4 7/8	1 3/4	1 5/8	5 3/8	7/8	4	9/32	68
8C94R	R2	15-Web	9.4	9.80	7 5/8	8 1/4	4 7/8	1 3/4	1 5/8	5 3/8	7/8	4	9/32	73
8C96R	R2	15-Web	9.6	10.00	7 13/16	8 1/4	4 7/8	1 3/4	1 5/8	5 3/8	7/8	4	9/32	70
8C98R	R2	15-Web	9.8	10.20	8	8 1/4	4 7/8	1 3/4	1 5/8	5 3/8	7/8	4	9/32	76
8C100R	R2	15-Web	10	10.40	8 3/16	8 1/4	4 7/8	1 3/4	1 5/8	5 3/8	7/8	4	9/32	72
8C102R	R2	15-Web	10.2	10.60	8 3/8	8 1/4	4 7/8	1 3/4	1 5/8	5 3/8	7/8	4	9/32	79
8C106R	R2	15-Web	10.6	11.00	8 13/16	8 1/4	4 7/8	1 3/4	1 5/8	5 3/8	7/8	4	9/32	76
8C110R	R2	15-Web	11	11.40	9 1/4	8 1/4	4 7/8	1 1/4	2 1/8	5 3/8	7/8	4	9/32	73
8C120R	R2	15-Web	12	12.40	10 1/4	8 1/4	4 7/8	1 1/4	2 1/8	5 3/8	7/8	4	9/32	74
8C130R	R2	15-Arm	13	13.40	11 1/4	8 1/4	4 7/8	1 1/4	2 1/8	5 3/8	7/8	4	9/32	80
8C140R	R2	15-Arm	14	14.40	12 1/4	8 1/4	4 7/8	1 1/4	2 1/8	5 3/8	7/8	4	9/32	84
8C150R	R2	15-Arm	15	15.40	13 1/4	8 1/4	4 7/8	1 1/4	2 1/8	5 3/8	7/8	4	9/32	93
8C160R	R2	15-Arm	16	16.40	14 1/4	8 1/4	4 7/8	1 1/4	2 1/8	5 3/8	7/8	4	9/32	100
8C180S	S2	15-Arm	18	18.40	16 1/4	8 13/32	6 3/4	7/32	1 9/32	6 3/8	1 1/16	5 11/16	3/8	140
8C180U	U0	15-Arm	18	18.40	16 1/4	8 1/4	4 15/16	1 1/16	2 1/4	8 3/8	1 3/16	3 3/4	15/32	141
8C200S	S2	15-Arm	20	20.40	18 1/4	8 13/32	6 3/4	7/32	1 9/32	6 3/8	1 1/16	5 11/16	3/8	163
8C200U	U0	15-Arm	20	20.40	18 1/4	8 1/4	4 15/16	1 1/16	2 1/4	8 3/8	1 3/16	3 3/4	15/32	160
8C240S	S2	15-Arm	24.0	24.40	22 1/4	8 13/32	6 3/4	7/32	1 9/32	6 3/8	1 1/16	5 11/16	3/8	194
8C240U	U0	15-Arm	24.0	24.40	22 1/4	8 1/4	4 15/16	1 1/16	2 1/4	8 3/8	1 3/16	3 3/4	15/32	184
8C270S	S2	15-Arm	27.0	27.40	25 1/4	8 13/32	6 3/4	7/32	1 9/32	6 3/8	1 1/16	5 11/16	3/8	224
8C300S	S2	15-Arm	30.0	30.40	28 1/8	8 13/32	6 3/4	7/32	1 9/32	6 3/8	1 1/16	5 11/16	3/8	212
8C300U	U0	15-Arm	30.0	30.40	28 1/8	8 1/4	4 15/16	1 1/16	2 1/4	8 3/8	1 3/16	3 3/4	15/32	227
8C360S	S2	15-Arm	36.0	36.40	34 1/8	8 13/32	6 3/4	7/32	1 9/32	6 3/8	1 1/16	5 11/16	3/8	261
8C360U	U0	15-Arm	36.0	36.40	34 1/8	8 1/4	4 15/16	1 1/16	2 1/4	8 3/8	1 3/16	3 3/4	15/32	288
8C440S	S2	15-Arm	44.0	44.40	42 1/8	8 13/32	6 3/4	7/32	1 9/32	6 3/8	1 1/16	5 11/16	3/8	368
8C440U	U0	15-Arm	44.0	44.40	42 1/8	8 1/4	4 15/16	1 1/16	2 1/4	8 3/8	1 3/16	3 3/4	15/32	358
8C500S	S2	15-Arm	50.0	50.40	48 1/8	8 13/32	6 3/4	7/32	1 9/32	6 3/8	1 1/16	5 11/16	3/8	429
8C500U	U0	15-Arm	50.0	50.40	48 1/8	8 1/4	4 15/16	1 1/16	2 1/4	8 3/8	1 3/16	3 3/4	15/32	417
10 GROOVES,F =10 1/4"														
10C80R	R2	15-Web	8.0"	8.40"	6 3/8"	10 1/4"	4 7/8"	3 3/4"	1 5/8"	5 3/8"	7/8"	4"	9/32"	70
10C86R	R2	15-Web	8.6	9.00	6 15/16	10 1/4	4 7/8	3 3/4	1 5/8	5 3/8	7/8	4	9/32	72
10C90R	R2	15-Web	9.0	9.40	7 3/16	10 1/4	4 7/8	3 3/4	1 5/8	5 3/8	7/8	4	9/32	72
10C92R	R2	15-Web	9.2	9.60	7 3/8	10 1/4	4 7/8	3 3/4	1 5/8	5 3/8	7/8	4	9/32	70
10C94R	R2	15-Web	9.4	9.80	7 5/8	10 1/4	4 7/8	3 3/4	1 5/8	5 3/8	7/8	4	9/32	78
10C96R	R2	15-Web	9.6	10.00	7 13/16	10 1/4	4 7/8	3 3/4	1 5/8	5 3/8	7/8	4	9/32	73
10C98R	R2	15-Web	9.8	10.20	8	10 1/4	4 7/8	3 3/4	1 5/8	5 3/8	7/8	4	9/32	88
10C100R	R2	15-Web	10.0	10.40	8 3/16	10 1/4	4 7/8	3 3/4	1 5/8	5 3/8	7/8	4	9/32	89
10C102R	R2	15-Web	10.2	10.60	8 3/8	10 1/4	4 7/8	3 3/4	1 5/8	5 3/8	7/8	4	9/32	97
10C106R	R2	15-Web	10.6	11.00	8 13/16	10 1/4	4 7/8	3 3/4	1 5/8	5 3/8	7/8	4	9/32	84
10C110R	R2	15-Web	11.0	11.40	9 1/4	10 1/4	4 7/8	2 1/4	3 1/8	5 3/8	7/8	4	9/32	84
10C120R	R2	15-Web	12.0	12.40	10 1/4	10 1/4	4 7/8	2 1/4	3 1/8	5 3/8	7/8	4	9/32	97
10C130R	R2	15-Arm	13.0	13.40	11 1/4	10 1/4	4 7/8	2 1/4	3 1/8	5 3/8	7/8	4	9/32	102
10C140R	R2	15-Arm	14.0	14.40	12 1/4	10 1/4	4 7/8	2 1/4	3 1/8	5 3/8	7/8	4	9/32	106
10C150R	R2	15-Arm	15.0	15.40	13 1/4	10 1/4	4 7/8	2 1/4	3 1/8	5 3/8	7/8	4	9/32	110
10C160R	R2	15-Arm	16.0	16.40	14 1/4	10 1/4	4 7/8	2 1/4	3 1/8	5 3/8	7/8	4	9/32	111
10C180S	S2	15-Arm	18.0	18.40	16 1/4	10 1/4	6 3/4	1 5/32	2 9/32	6 3/8	1 1/16	5 11/16	3/8	164
10C180U	U0	15-Arm	18.0	18.40	16 1/4	10 1/4	4 15/16	2 1/16	3 1/4	8 3/8	1 3/16	3 3/4	15/32	163

C series

Table No.7 Specifications—Stock "C" Sheaves

Part No.	Bushing	Type	DIAMETERS											Wt. Less Bush.
			Datum "C"	Outside	Inside	O.L.	L	P	C	H	G	X	E	
10 GROOVES(Cont.),F =10 1/4"														
10C200S	S2	15-Arm	20.0	20.40	18 1/4	10 1/4	6 3/4	1 5/32	2 9/32	6 3/8	1 1/16	5 11/16	3/8	170
10C200U	U0	15-Arm	20.0	20.40	18 1/4	10 1/4	4 15/16	2 1/16	3 1/4	8 3/8	1 3/16	3 3/4	15/32	178
10C240S	S2	15-Arm	24.0	24.40	22 1/4	10 1/4	6 3/4	1 5/32	2 9/32	6 3/8	1 1/16	5 11/16	3/8	210
10C240U	U0	15-Arm	24.0	24.40	22 1/4	10 1/4	4 15/16	2 1/16	3 1/4	8 3/8	1 3/16	3 3/4	15/32	208
10C270S	S2	15-Arm	27.0	27.40	25 1/4	10 1/4	6 3/4	1 5/32	2 9/32	6 3/8	1 1/16	5 11/16	3/8	246
10C300S	S2	15-Arm	30.0	30.40	28 1/8	10 1/4	6 3/4	1 5/32	2 9/32	6 3/8	1 1/16	5 11/16	3/8	278
10C300U	U1	15-Arm	30.0	30.40	28 1/8	10 1/4	7 1/8	13/16	2 5/16	8 3/8	1 1/2	5 5/8	15/32	298
10C360S	S2	15-Arm	36.0	36.40	34 1/8	10 1/4	6 3/4	1 5/32	2 9/32	6 3/8	1 1/16	5 11/16	3/8	324
10C360U	U1	15-Arm	36.0	36.40	34 1/8	10 1/4	7 1/8	13/16	2 5/16	8 3/8	1 1/2	5 5/8	15/32	362
10C440U	U1	15-Arm	44.0	44.40	42 1/8	10 1/4	7 1/8	13/16	2 5/16	8 3/8	1 1/2	5 5/8	15/32	463
10C500U	U1	15-Arm	50.0	50.40	48 1/8	10 1/4	7 1/8	13/16	2 5/16	8 3/8	1 1/2	5 5/8	15/32	480
12 GROOVES,F =12 1/4"														
12C90S	S2	15-Web	9.0"	9.40"	7 3/16"	12 1/4"	6 3/4"	3 1/2"	2"	6 3/8"	1 1/16"	5 11/16"	3/8"	88
12C92S	S2	15-Web	9.2	9.60	7 3/8	12 1/4	6 3/4	3 1/2	2	6 3/8	1 1/16	5 11/16	3/8	93
12C94S	S2	15-Web	9.4	9.80	7 5/8	12 1/4	6 3/4	3 1/2	2	6 3/8	1 1/16	5 11/16	3/8	104
12C96S	S2	15-Web	9.6	10.00	7 13/16	12 1/4	6 3/4	3 1/2	2	6 3/8	1 1/16	5 11/16	3/8	102
12C98S	S2	15-Web	9.8	10.20	8	12 1/4	6 3/4	3 1/2	2	6 3/8	1 1/16	5 11/16	3/8	111
12C100S	S2	15-Web	10.0	10.40	8 3/16	12 1/4	6 3/4	3 1/2	2	6 3/8	1 1/16	5 11/16	3/8	112
12C102S	S2	15-Web	10.2	10.60	8 3/8	12 1/4	6 3/4	3 1/2	2	6 3/8	1 1/16	5 11/16	3/8	121
12C106S	S2	15-Web	10.6	11.00	8 13/16	12 1/4	6 3/4	3 1/2	2	6 3/8	1 1/16	5 11/16	3/8	133
12C110S	S2	15-Web	11.0	11.40	9 1/4	12 1/4	6 3/4	2 7/32	3 9/32	6 3/8	1 1/16	5 11/16	3/8	128
12C120S	S2	15-Web	12.0	12.40	10 1/4	12 1/4	6 3/4	2 7/32	3 9/32	6 3/8	1 1/16	5 11/16	3/8	140
12C130S	S2	15-Web	13.0	13.40	11 1/4	12 1/4	6 3/4	2 7/32	3 9/32	6 3/8	1 1/16	5 11/16	3/8	165
12C140S	S2	15-Arm	14.0	14.40	12 1/4	12 1/4	6 3/4	2 7/32	3 9/32	6 3/8	1 1/16	5 11/16	3/8	148
12C150S	S2	15-Arm	15.0	15.40	13 1/4	12 1/4	6 3/4	2 7/32	3 9/32	6 3/8	1 1/16	5 11/16	3/8	162
12C160S	S2	15-Arm	16.0	16.40	14 1/4	12 1/4	6 3/4	2 7/32	3 9/32	6 3/8	1 1/16	5 11/16	3/8	163
12C180U	U1	15-Arm	18.0	18.40	16 1/4	12 1/4	7 1/8	1 13/16	3 5/16	8 3/8	1 1/2	5 5/8	15/32	204
12C200U	U1	15-Arm	20.0	20.40	18 1/4	12 1/4	7 1/8	1 13/16	3 5/16	8 3/8	1 1/2	5 5/8	15/32	224
12C240U	U1	15-Arm	24.0	24.40	22 1/4	12 1/4	7 1/8	1 13/16	3 5/16	8 3/8	1 1/2	5 5/8	15/32	257
12C270U	U1	15-Arm	27.0	27.40	25 1/4	12 1/4	7 1/8	1 13/16	3 5/16	8 3/8	1 1/2	5 5/8	15/32	300
12C300U	U1	15-Arm	30.0	30.40	28 1/8	12 1/4	7 1/8	1 13/16	3 5/16	8 3/8	1 1/2	5 5/8	15/32	327
12C360U	U1	15-Arm	36.0	36.40	34 1/8	12 1/4	7 1/8	1 13/16	3 5/16	8 3/8	1 1/2	5 5/8	15/32	397
12C440U	U1	15-Arm	44.0	44.40	42 1/8	12 1/4	7 1/8	1 13/16	3 5/16	8 3/8	1 1/2	5 5/8	15/32	519
12C500U	U1	15-Arm	50.0	50.40	48 1/8	12 1/4	7 1/8	1 13/16	3 5/16	8 3/8	1 1/2	5 5/8	15/32	551

C series



Dimensions in inches, weight in pounds

2 GROOVES, F = 2 3/8"

Part No.	P.D.	O.D.	Type	Bush	Bush Max. Bore	E	L Thru Bore	M	Wt. Less Bush.
	"C" Belts								
2C70TB2517	7.00	7.40	A-1	2517	2 1/2	5/8	1 3/4	0	13.6
2C75TB2517	7.50	7.90	A-1	2517	2 1/2	5/8	1 3/4	0	16.2
2C80TB2517	8.00	8.40	A-1	2517	2 1/2	5/8	1 3/4	0	19
2C85TB2517	8.50	8.90	A-2	2517	2 1/2	5/8	1 3/4	0	17.6
2C90TB2517	9.00	9.40	A-2	2517	2 1/2	5/8	1 3/4	0	21
2C95TB2517	9.50	9.90	A-2	2517	2 1/2	5/8	1 3/4	0	22
2C100TB2517	10.00	10.40	A-2	2517	2 1/2	5/8	1 3/4	0	24.3
2C105TB2517	10.50	10.90	A-2	2517	2 1/2	5/8	1 3/4	0	26.0
2C110TB2517	11.00	11.40	A-2	2517	2 1/2	5/8	1 3/4	0	28.3
2C120TB2517	12.00	12.40	A-2	2517	2 1/2	5/8	1 3/4	0	32.4
2C130TB2517	13.00	13.40	A-3	2517	2 1/2	5/8	1 3/4	0	35.0
2C140TB2517	14.00	14.40	A-3	2517	2 1/2	5/8	1 3/4	0	36.0
2C160TB2517	16.00	16.40	A-3	2517	2 1/2	5/8	1 3/4	0	42.0
2C180TB3020	18.00	18.40	A-3	3020	3	0	2	3/8	42.0
2C200TB3020	20.00	20.40	A-3	3020	3	0	2	3/8	45.0
2C240TB3020	24.00	24.40	A-3	3020	3	0	2	3/8	72.0
2C300TB3535	30.00	30.40	C-3	3535	3 1/2	1/2	3 1/2	5/8	85.0

3 GROOVES, F = 3 3/8"

Part Number	P.D	O.D.	Type	Bush	Bush Max.Bore	E	L Thru Bore	M	Wt. Less Bush.
	"C" Belts								
3C70TB2517	7.00	7.40	A-1	2517	2 1/2	1/4	1 3/4	1 3/8	16.6
3C75TB2517	7.50	7.90	A-1	2517	2 1/2	1/4	1 3/4	1 3/8	19.8
3C80TB2517	8.00	8.40	A-1	2517	2 1/2	1/4	1 3/4	1 3/8	22.9
3C85TB2517	8.50	8.90	A-2	2517	2 1/2	1/4	1 3/4	1 3/8	23.0
3C90TB2517	9.00	9.40	A-2	2517	2 1/2	1/4	1 3/4	1 3/8	24.8
3C95TB2517	9.50	9.90	A-2	2517	2 1/2	1/4	1 3/4	1 3/8	26.2
3C100TB2517	10.00	10.40	A-2	2517	2 1/2	1/4	1 3/4	1 3/8	28.7
3C105TB2517	10.50	10.90	A-2	2517	2 1/2	1/4	1 3/4	1 3/8	31.1
3C110TB2517	11.00	11.40	A-2	2517	2 1/2	1/4	1 3/4	1 3/8	33.5
3C120TB3020	12.00	12.40	A-2	3020	3	0	2	1 3/8	40.3
3C130TB3020	13.00	13.40	A-3	3020	3	0	2	1 3/8	49.0
3C140TB3020	14.00	14.40	A-3	3020	3	0	2	1 3/8	50.0
3C160TB3020	16.00	16.40	A-3	3020	3	0	2	1 3/8	64.0
3C180TB3030	18.00	18.40	A-3	3030	3	0	3	3/8	62.2
3C200TB3030	20.00	20.40	A-3	3030	3	0	3	3/8	70.5
3C240TB3030	24.00	24.40	A-3	3030	3	0	3	3/8	88.2
3C300TB3535	30.00	30.40	B-3	3535	3 1/2	0	3 1/2	1/8	125.0
3C360TB3535	36.00	36.40	B-3	3535	3 1/2	0	3 1/2	1/8	195.3

4 GROOVES, F = 4 3/8"

Part No.	P.D	O.D.	Type	Bush	Bush Max. Bore	E	L Thru Bore	M	Wt. Less Bush.
	"C" Belts								
4C70TB2517	7.00	7.40	A-1	2517	2 1/2	1/2	1 3/4	2 1/8	20.0
4C75TB2517	7.50	7.90	A-1	2517	2 1/2	1/2	1 3/4	2 1/8	23.0
4C80TB2517	8.00	8.40	A-1	2517	2 1/2	1/2	1 3/4	2 1/8	25.0
4C85TB2517	8.50	8.90	A-2	2517	2 1/2	1/2	1 3/4	2 1/8	26.0
4C90TB2517	9.00	9.40	A-2	2517	2 1/2	1/2	1 3/4	2 1/8	27.0
4C95TB2517	9.50	9.90	A-2	2517	2 1/2	1/2	1 3/4	2 1/8	36.0
4C100TB2517	10.00	10.40	A-2	2517	2 1/2	1/2	1 3/4	2 1/8	39.0
4C105TB2517	10.50	10.90	A-2	2517	2 1/2	1/2	1 3/4	2 1/8	42.0
4C110TB2517	11.00	11.40	A-2	2517	2 1/2	1/2	1 3/4	2 1/8	45.0
4C120TB3030	12.00	12.40	A-2	3030	3	0	3	1 3/8	47.0
4C130TB3030	13.00	13.40	A-3	3030	3	0	3	1 3/8	51.0
4C140TB3030	14.00	14.40	A-3	3030	3	0	3	1 3/8	54.0
4C160TB3030	16.00	16.40	A-3	3030	3	0	3	1 3/8	71.0
4C180TB3030	18.00	18.40	A-3	3030	3	0	3	1 3/8	81.0
4C200TB3030	20.00	20.40	A-3	3030	3	0	3	1 3/8	84.0
4C240TB3030	24.00	24.40	A-3	3030	3	0	3	1 3/8	116.0
4C300TB3535	30.00	30.40	A-3	3535	3 1/2	0	3 1/2	7/8	164.0
4C360TB3535	36.00	36.40	A-3	3535	3 1/2	0	3 1/2	7/8	192.0
4C440TB4040	44.00	44.40	A-3	4040	4	0	4	3/8	282.0

series C



5 GROOVES, F = 5 3/8"

Part Number	P.D	O.D.	Type	Bush	Bush Max. Bore	E	L Thru Bore	M	Wt. Less Bush.
	"C" Belts								
5C70TB2517	7.00	7.40	A-1	2517	2 1/2	1 1/2	1 3/4	2 1/8	23.0
5C75TB2517	7.50	7.90	A-1	2517	2 1/2	1 1/2	1 3/4	2 1/8	26.0
5C80TB2517	8.00	8.40	A-1	2517	2 1/2	1 1/2	1 3/4	2 1/8	30.0
5C85TB2517	8.50	8.90	A-1	2517	2 1/2	1 1/2	1 3/4	2 1/8	34.0
5C90TB2517	9.00	9.40	A-2	2517	2 1/2	1 1/2	1 3/4	2 1/8	35.0
5C95TB2517	9.50	9.90	A-2	2517	2 1/2	1 1/2	1 3/4	2 1/8	36.0
5C100TB2517	10.00	10.40	A-2	2517	2 1/2	1 1/2	1 3/4	2 1/8	39.0
5C105TB2517	10.50	10.90	A-2	2517	2 1/2	1 1/2	1 3/4	2 1/8	42.0
5C110TB2517	11.00	11.40	A-2	2517	2 1/2	1 1/2	1 3/4	2 1/8	43.0
5C120TB3030	12.00	12.40	A-2	3030	3	1/2	3	1 7/8	58.0
5C130TB3030	13.00	13.40	A-3	3030	3	1/2	3	1 7/8	63.0
5C140TB3030	14.00	14.40	A-3	3030	3	1/2	3	1 7/8	65.0
5C160TB3030	16.00	16.40	A-3	3030	3	1/2	3	1 7/8	70.0
5C180TB3030	18.00	18.40	A-3	3030	3	1/2	3	1 7/8	83.0
5C200TB3535	20.00	20.40	A-3	3535	3 1/2	0	3 1/2	1 7/8	110.0
5C240TB3535	24.00	24.40	A-3	3535	3 1/2	0	3 1/2	1 7/8	138.0
5C300TB3535	30.00	30.40	A-3	3535	3 1/2	0	3 1/2	1 7/8	186.0
5C360TB4040	36.00	36.40	A-3	4040	4	1/4	4	1 1/8	244.0
5C440TB4040	44.00	44.40	A-3	4040	4	1/4	4	1 1/8	288.0

C series

6 GROOVES, F = 6 3/8"

Part No.	P.D	O.D.	Type	Bush	Bush Max. Bore	E	L Thru Bore	M	Wt. Less Bush.
	"C" Belts								
6C70TB3030	7.00	7.40	A-1	3030	3	1	3	2 3/8	30.0
6C75TB3030	7.50	7.90	A-1	3030	3	1	3	2 3/8	31.0
6C80TB3030	8.00	8.40	A-1	3030	3	1	3	2 3/8	35.0
6C85TB3030	8.50	8.90	A-1	3030	3	1	3	2 3/8	40.0
6C90TB3030	9.00	9.40	A-1	3030	3	1	3	2 3/8	47.0
6C95TB3030	9.50	9.90	A-1	3030	3	1	3	2 3/8	53.0
6C100TB3030	10.00	10.40	A-1	3030	3	1	3	2 3/8	57.0
6C105TB3030	10.50	10.90	A-2	3030	3	1	3	2 3/8	58.0
6C110TB3030	11.00	11.40	A-2	3030	3	1	3	2 3/8	66.0
6C120TB3030	12.00	12.40	A-2	3030	3	1	3	2 3/8	70.0
6C130TB3030	13.00	13.40	A-3	3030	3	1	3	2 3/8	75.0
6C140TB3535	14.00	14.40	A-3	3535	3 1/2	1/2	3 1/2	2 3/8	80.0
6C160TB3535	16.00	16.40	A-3	3535	3 1/2	1/2	3 1/2	2 3/8	87.0
6C180TB3535	18.00	18.40	A-3	3535	3 1/2	1/2	3 1/2	2 3/8	102.0
6C200TB3535	20.00	20.40	A-3	3535	3 1/2	1/2	3 1/2	2 3/8	126.0
6C240TB3535	24.00	24.40	A-3	3535	3 1/2	1/2	3 1/2	2 3/8	150.0
6C300TB4040	30.00	30.40	A-3	4040	4	1	4	1 3/8	226.0
6C360TB4040	36.00	36.40	A-3	4040	4	1	4	1 3/8	270.0
6C440TB4040	44.00	44.40	A-3	4040	4	1	4	1 3/8	320.0

8 GROOVES, F = 8 3/8"

Part Number	P.D	O.D.	Type	Bush	Bush Max.Bore	E	L Thru Bore	M	Wt. Less Bush.
	"C" Belts								
8C80TB3030	8.00	8.40	A-1	3030	3	2	3	3 3/8	45.0
8C85TB3030	8.50	8.90	A-1	3030	3	2	3	3 3/8	47.0
8C90TB3535	9.00	9.40	A-1	3535	3 1/2	1 1/2	3 1/2	3 3/8	64.0
8C95TB3535	9.50	9.90	A-1	3535	3 1/2	1 1/2	3 1/2	3 3/8	67.0
8C100TB3535	10.00	10.40	A-1	3535	3 1/2	1 1/2	3 1/2	3 3/8	70.0
8C105TB3535	10.50	10.90	A-1	3535	3 1/2	1 1/2	3 1/2	3 3/8	84.0
8C110TB3535	11.00	11.40	A-1	3535	3 1/2	1 1/2	3 1/2	3 3/8	87.0
8C120TB3535	12.00	12.40	A-2	3535	3 1/2	1 1/2	3 1/2	3 3/8	90.0
8C130TB3535	13.00	13.40	A-2	3535	3 1/2	1 1/2	3 1/2	3 3/8	97.0
8C140TB3535	14.00	14.40	A-2	3535	3 1/2	1 1/2	3 1/2	3 3/8	105.0
8C160TB3535	16.00	16.40	A-3	3535	3 1/2	1 1/2	3 1/2	3 3/8	115.0
8C180TB4040	18.00	18.40	A-3	4040	4	1 1/2	4	2 7/8	137.0
8C200TB4040	20.00	20.40	A-3	4040	4	1 1/2	4	2 7/8	180.0
8C240TB4040	24.00	24.40	A-3	4040	4	1 1/2	4	2 7/8	205.0
8C300TB4040	30.00	30.40	A-3	4040	4	1 1/2	4	2 7/8	263.0
8C360TB4545	36.00	36.40	A-3	4545	4 1/2	1 1/4	4 1/2	2 5/8	335.7
8C440TB4545	44.00	44.40	A-3	4545	4 1/2	1 1/4	4 1/2	2 5/8	432.0

10 GROOVES, F = 10 3/8"

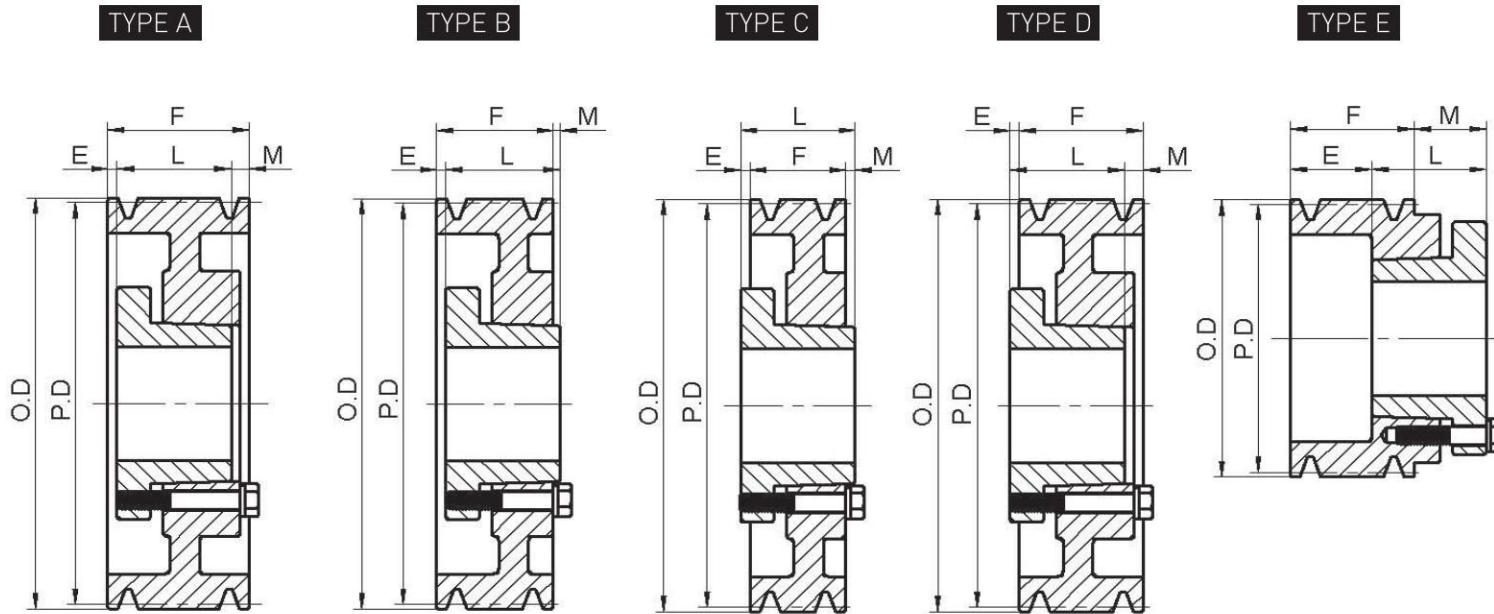
Part No.	P.D	O.D.	Type	Bush	Bush Max. Bore	E	L Thru Bore	M	Wt. Less Bush.
	"C" Belts								
10C90TB4545	9.00	9.40	A-1	4545	4 1/2	1 1/2	4 1/2	4 3/8	57.0
10C95TB4545	9.50	9.90	A-1	4545	4 1/2	1 1/2	4 1/2	4 3/8	66.0
10C100TB4545	10.00	10.40	A-1	4545	4 1/2	1 1/2	4 1/2	4 3/8	77.0
10C105TB4545	10.50	10.90	A-1	4545	4 1/2	1 1/2	4 1/2	4 3/8	87.0
10C110TB4545	11.00	11.40	A-1	4545	4 1/2	1 1/2	4 1/2	4 3/8	98.0
10C120TB4545	12.00	12.40	A-1	4545	4 1/2	1 1/2	4 1/2	4 3/8	121.0
10C130TB4545	13.00	13.40	A-1	4545	4 1/2	2	4 1/2	3 7/8	146.0
10C140TB4545	14.00	14.40	A-2	4545	4 1/2	2	4 1/2	3 7/8	173.0
10C160TB4545	16.00	16.40	A-2	4545	4 1/2	2	4 1/2	3 7/8	233.0
10C180TB4545	18.00	18.40	A-2	4545	4 1/2	2	4 1/2	3 7/8	176.0
10C200TB4545	20.00	20.40	A-3	4545	4 1/2	2	4 1/2	3 7/8	201.0
10C240TB4545	24.00	24.40	A-3	4545	4 1/2	2	4 1/2	3 7/8	243.0
10C300TB4545	30.00	30.40	A-3	4545	4 1/2	2	4 1/2	3 7/8	320.0
10C360TB4545	36.00	36.40	A-3	4545	4 1/2	2	4 1/2	3 7/8	464.0
10C440TB4545	44.00	44.40	A-3	4545	4 1/2	2	4 1/2	3 7/8	508.0

12 GROOVES, F = 12 3/8"

Part Number	P.D	O.D.	Type	Bush	Bush Max.Bore	E	L Thru Bore	M	Wt. Less Bush.
	"C" Belts								
12C90TB4040	9.00	9.40	A-1	4040	4	3 1/2	4	4 7/8	65.0
12C95TB4040	9.50	9.90	A-1	4040	4	3 1/2	4	4 7/8	75.0
12C100TB4040	10.00	10.40	A-1	4040	4	3 1/2	4	4 7/8	85.0
12C105TB4040	10.50	10.90	A-1	4040	4	3 1/2	4	4 7/8	95.0
12C110TB4040	11.00	11.40	A-1	4040	4	3 1/2	4	4 7/8	104.0
12C120TB4040	12.00	12.40	A-1	4040	4	3 1/2	4	4 7/8	126.0
12C130TB4545	13.00	13.40	A-1	4545	4 1/2	3	4 1/2	4 7/8	156.0
12C140TB4545	14.00	14.40	A-1	4545	4 1/2	3	4 1/2	4 7/8	184.0

series C

Q-D Sheaves for "C" Belts



**Standard Keyseats
Table No.1**

Bore Range	Keyseats
1/2" - 9/16"	1/8" x 1/16"
5/8 - 7/8	3/16 x 3/32
15/16 - 1 1/4	1/4 x 1/8
15/16 - 1 3/8	5/16 x 5/32
1 7/16 - 1 3/4	3/8 x 3/16
1 13/16 - 2 1/4	1/2 x 1/4
2 5/16 - 2 3/4	5/8 x 5/16
2 13/16 - 3 1/4	3/4 x 3/8
3 3/8 - 3 3/4	7/8 x 7/16
3 7/8 - 4 1/2	1 x 1/2
4 5/8 - 5 1/2	1 1/4 x 5/8

1 3/8" Bore Bushings also available with 3/8x3/16" Keyseats.

Table No.2

Specifications

Part No.	Bushing	Bore Range	Type	Datum "C"	O.D.	E	L	M	Wt. Less Bush.
1 GROOVE, F = 1 1/4"									
1C60SK	SK	1/2" - 2 5/8"	D-Sol.	6"	6.4	25/32	1 15/16	3/32	5.95
1C70SF	SF	1/2" - 2 15/16"	D-Sol.	7.0	7.4	27/32	2 1/16	1/32	8.38
1C75SF	SF	1/2 - 2 15/16	D-Web	7.5	7.9	27/32	2 1/16	1/32	9.37
1C80SF	SF	1/2 - 2 15/16	D-Web	8.0	8.4	27/32	2 1/16	1/32	10.41
1C85SF	SF	1/2 - 2 15/16	D-Web	8.5	8.9	27/32	2 1/16	1/32	11.68
1C90SF	SF	1/2 - 2 15/16	D-Arm	9.0	9.4	27/32	2 1/16	1/32	11.27
1C95SF	SF	1/2 - 2 15/16	D-Arm	9.5	9.9	27/32	2 1/16	1/32	12.35
1C100SF	SF	1/2 - 2 15/16	D-Arm	10.0	10.4	27/32	2 1/16	1/32	13.91
1C105SF	SF	1/2 - 2 15/16	D-Arm	10.5	10.9	27/32	2 1/16	1/32	14.77
1C110SF	SF	1/2 - 2 15/16	D-Arm	11.0	11.4	27/32	2 1/16	1/32	15.70
1C120SF	SF	1/2 - 2 15/16	D-Arm	12.0	12.4	27/32	2 1/16	1/32	16.64
1C130SF	SF	1/2 - 2 15/16	D-Arm	13.0	13.4	27/32	2 1/16	1/32	18.63
1C140SF	SF	1/2 - 2 15/16	D-Arm	14.0	14.4	27/32	2 1/16	1/32	20.06
1C150SF	SF	1/2 - 2 15/16	D-Arm	15.0	15.4	27/32	2 1/16	1/32	21.89
1C160SF	SF	1/2 - 2 15/16	D-Arm	16.0	16.4	27/32	2 1/16	1/32	23.92
1C180SF	SF	1/2 - 2 15/16	D-Arm	18.0	18.4	27/32	2 1/16	1/32	27.45
1C200SF	SF	1/2 - 2 15/16	D-Arm	20.0	20.4	27/32	2 1/16	1/32	29.43
1C240SF	SF	1/2 - 2 15/16	D-Arm	24.0	24.4	27/32	2 1/16	1/32	44.20
2 GROOVES, F = 2 1/4"									
2C55SD	SD	1/2" - 2"	A-Sol.	5.5	5.9	3/32	1 13/16	11/32	
2C60SF	SF	1/2- 2 15/16	D-Sol.	6.0	6.4	3/32	2 1/16	9/32	6.83
2C70SF	SF	1/2- 2 15/16	D-Sol.	7.0	7.4	3/32	2 1/16	9/32	11.42
2C75SF	SF	1/2- 2 15/16	D-Sol.	7.5	7.9	3/32	2 1/16	9/32	13.45
2C80SF	SF	1/2- 2 15/16	D-Sol.	8.0	8.4	3/32	2 1/16	9/32	15.76
2C85SF	SF	1/2- 2 15/16	D-Web	8.5	8.9	3/32	2 1/16	9/32	16.64
2C90SF	SF	1/2- 2 15/16	D-Web	9.0	9.4	3/32	2 1/16	9/32	17.97
2C95SF	SF	1/2- 2 15/16	D-Web	9.5	9.9	3/32	2 1/16	9/32	19.73
2C100SF	SF	1/2- 2 15/16	D-Arm	10.0	10.4	3/32	2 1/16	9/32	18.56
2C105SF	SF	1/2- 2 15/16	D-Arm	10.5	10.9	3/32	2 1/16	9/32	19.07
2C110SF	SF	1/2- 2 15/16	D-Arm	11.0	11.4	3/32	2 1/16	9/32	20.94
2C120SF	SF	1/2- 2 15/16	D-Arm	12.0	12.4	11/32	2 1/16	17/32	23.19
2C130SF	SF	1/2- 2 15/16	D-Arm	13.0	13.4	11/32	2 1/16	17/32	24.91
2C140SF	SF	1/2- 2 15/16	D-Arm	14.0	14.4	11/32	2 1/16	17/32	27.67
2C150SF	SF	1/2- 2 15/16	D-Arm	15.0	15.4	11/32	2 1/16	17/32	29.54
2C160SF	SF	1/2- 2 15/16	D-Arm	16.0	16.4	11/32	2 1/16	17/32	33.62
2C180SF	SF	1/2- 2 15/16	D-Arm	18.0	18.4	11/32	2 1/16	17/32	38.69
2C200SF	SF	1/2- 2 15/16	D-Arm	20.0	20.4	11/32	2 1/16	17/32	43.54
2C240SF	SF	1/2- 2 15/16	D-Arm	24.0	24.4	11/32	2 1/16	17/32	53.02
2C270F	F	1-4	C-Arm	27.0	27.4	1 3/32	3 5/8	9/32	76.06
2C300F	F	1-4	C-Arm	30.0	30.4	1 3/32	3 5/8	9/32	74.08

Table No.3

Specifications

Part No.	Bushing	Bore Range	Type	Datum "C"	O.D.	E	L	M	Wt. Less Bush.
3 GROOVES, F = 3 1/4"									
3C50SD	SD	1/2" - 2"	A-Sol.	5.0"	5.4	19/32	1 13/16	27/32	7.61
3C54SD	SD	1/2-2	A-Sol.	5.4	5.8	19/32	1 13/16	27/32	7.98
3C55SD	SD	1/2-2	A-Sol.	5.5	5.9	19/32	1 13/16	27/32	9.74
3C60SF	SF	1/2- 2 15/16	D-Sol.	6.0	6.4	23/32	2 1/16	1 29/32	8.97
3C65SF	SF	1/2- 2 15/16	A-Sol.	6.5	6.9	13/32	2 1/16	25/32	11.68
3C70SF	SF	1/2- 2 15/16	A-Sol.	7.0	7.4	13/32	2 1/16	25/32	14.44
3C75SF	SF	1/2- 2 15/16	A-Sol.	7.5	7.9	13/32	2 1/16	25/32	16.53
3C80E	E	7/8- 3 1/2	B-Sol.	8.0	8.4	17/32	2 3/4	1/32	19.62
3C85E	E	7/8- 3 1/2	B-Sol.	8.5	8.9	17/32	2 3/4	1/32	22.38
3C90E	E	7/8- 3 1/2	A-Sol.	9.0	9.4	15/32	2 3/4	1/32	25.57
3C95E	E	7/8- 3 1/2	A-Web	9.5	9.9	15/32	2 3/4	1/32	29.06
3C100E	E	7/8- 3 1/2	A-Web	10.0	10.4	15/32	2 3/4	1/32	29.76
3C105E	E	7/8- 3 1/2	A-Arm	10.5	10.9	15/32	2 3/4	1/32	29.37
3C110E	E	7/8- 3 1/2	A-Arm	11.0	11.4	15/32	2 3/4	1/32	31.42
3C120E	E	7/8- 3 1/2	A-Arm	12.0	12.4	15/32	2 3/4	1/32	34.52
3C130E	E	7/8- 3 1/2	A-Arm	13.0	13.4	15/32	2 3/4	1/32	38.40
3C136E	E	7/8- 3 1/2	A-Arm	13.6	14	15/32	2 3/4	1/32	39.24
3C140E	E	7/8- 3 1/2	A-Arm	14.0	14.4	15/32	2 3/4	1/32	39.57
3C150E	E	7/8- 3 1/2	A-Arm	15.0	15.4	15/32	2 3/4	1/32	42.77
3C160E	E	7/8- 3 1/2	A-Arm	16.0	16.4	15/32	2 3/4	1/32	45.86
3C180E	E	7/8- 3 1/2	A-Arm	18.0	18.4	15/32	2 3/4	1/32	54.23
3C200E	E	7/8- 3 1/2	D-Arm	20.0	20.4	7/32	2 3/4	23/32	61.95
3C240E	E	7/8- 3 1/2	D-Arm	24.0	24.4	7/32	2 3/4	23/32	76.50
3C270F	F	1 - 4	D-Arm	27.0	27.4	17/32	3 5/8	5/32	88.74
3C300F	F	1 - 4	D-Arm	30.0	30.4	17/32	3 5/8	5/32	112.68
3C360F	F	1 - 4	D-Arm	36.0	36.4	17/32	3 5/8	5/32	159.88
3C440F	F	1 - 4	D-Arm	44.0	44.4	17/32	3 5/8	5/32	324.83
3C500F	F	1 - 4	D-Arm	50.0	50.4	17/32	3 5/8	5/32	260.15
4 GROOVES, F = 4 1/4"									
4C50SD	SD	1/2-2	A-Sol.	5.0	5.4	27/32	1 13/16	1 19/32	9.37
4C54SD	SD	1/2-2	A-Sol.	5.4	5.8	27/32	1 13/16	1 19/32	
4C55SD	SD	1/2-2	A-Sol.	5.5	5.9	27/32	1 13/16	1 19/32	11.90
4C56SD	SD	1/2-2	A-Sol.	5.6	6	21/32	1 13/16	1 29/32	12.90
4C60SF	SF	1/2- 2 15/16	A-Sol.	6.0	6.4	21/32	2 1/16	1 17/32	10.65
4C65SF	SF	1/2- 2 15/16	A-Sol.	6.5	6.9	21/32	2 1/16	1 17/32	14.11
4C70SF	SF	1/2- 2 15/16	A-Sol.	7.0	7.4	21/32	2 1/16	1 17/32	17.55
4C75SF	SF	1/2- 2 15/16	A-Sol.	7.5	7.9	21/32	2 1/16	1 17/32	20.13
4C80E	E	7/8- 3 1/2	A-Sol.	8.0	8.4	25/32	2 3/4	23/32	23.41
4C85E	E	7/8- 3 1/2	A-Sol.	8.5	8.9	25/32	2 3/4	23/32	26.01
4C90E	E	7/8- 3 1/2	A-Sol.	9.0	9.4	25/32	2 3/4	23/32	29.89
4C95E	E	7/8- 3 1/2	A-Web	9.5	9.9	25/32	2 3/4	23/32	32.96
4C100E	E	7/8- 3 1/2	A-Web	10.0	10.4	25/32	2 3/4	23/32	34.19
4C105E	E	7/8- 3 1/2	A-Web	10.5	10.9	25/32	2 3/4	23/32	36.93
4C110E	E	7/8- 3 1/2	A-Web	11.0	11.4	25/32	2 3/4	23/32	40.37
4C120E	E	7/8- 3 1/2	A-Arm	12.0	12.4	25/32	2 3/4	23/32	40.68
4C130E	E	7/8- 3 1/2	A-Arm	13.0	13.4	25/32	2 3/4	23/32	45.42
4C140E	E	7/8- 3 1/2	A-Arm	14.0	14.4	25/32	2 3/4	23/32	48.28
4C150E	E	7/8- 3 1/2	A-Arm	15.0	15.4	25/32	2 3/4	23/32	54.19
4C160E	E	7/8- 3 1/2	A-Arm	16.0	16.4	25/32	2 3/4	23/32	58.58
4C180E	E	7/8- 3 1/2	A-Arm	18.0	18.4	25/32	2 3/4	23/32	66.58
4C200E	E	7/8- 3 1/2	A-Arm	20.0	20.4	9/32	2 3/4	1 7/32	75.51
4C240F	F	1-4	A-Arm	24.0	24.4	1/32	3 5/8	19/32	102.18
4C270F	F	1-4	A-Arm	27.0	27.4	1/32	3 5/8	19/32	118.90
4C300F	F	1-4	A-Arm	30.0	30.4	1/32	3 5/8	19/32	136.69
4C340F	F	1-4	A-Arm	34.0	34.4	1/32	3 5/8	19/32	0.00
4C360F	F	1-4	A-Arm	36.0	36.4	1/32	3 5/8	19/32	180.78
4C440J	J	1 1/2- 4 1/2	C-Arm	44.0	44.4	0	4 5/8	3/8	255.74
4C500J	J	1 1/2- 4 1/2	C-Arm	50.0	50.4	0	4 5/8	3/8	317.91

series C

Table No.4

Specifications

Part No.	Bushing	Bore Range	Type	Datum "C"	O.D.	E	L	M	Wt. Less Bush.
5 GROOVES, F = 5 1/4"									
5C55SK	SK	1/2 - 2 5/8	E-Sol.	5.5	5.9	25/32	1 15/16	4 3/32	14.46
5C60SF	SF	1/2 - 2 15/16	A-Sol.	6.0	6.4	1 1/32	2 1/16	2 5/32	12.19
5C65SF	SF	1/2 - 2 15/16	A-Sol.	6.5	6.9	1 1/32	2 1/16	2 5/32	17.50
5C70SF	SF	1/2 - 2 15/16	A-Sol.	7.0	7.4	1 1/32	2 1/16	2 5/32	20.17
5C75SF	SF	1/2 - 2 15/16	A-Sol.	7.5	7.9	1 1/32	2 1/16	2 5/32	23.37
5C80E	E	7/8 - 3 1/2	A-Sol.	8.0	8.4	1 5/32	2 3/4	1 11/32	27.12
5C85E	E	7/8 - 3 1/2	A-Sol.	8.5	8.9	1 5/32	2 3/4	1 11/32	30.18
5C90E	E	7/8 - 3 1/2	A-Sol.	9.0	9.4	1 5/32	2 3/4	1 11/32	34.17
5C95E	E	7/8 - 3 1/2	A-Web	9.5	9.9	1 5/32	2 3/4	1 11/32	37.70
5C100E	E	7/8 - 3 1/2	A-Web	10.0	10.4	1 5/32	2 3/4	1 11/32	38.80
5C105E	E	7/8 - 3 1/2	A-Web	10.5	10.9	1 5/32	2 3/4	1 11/32	41.67
5C110E	E	7/8 - 3 1/2	A-Web	11.0	11.4	1 5/32	2 3/4	1 11/32	44.97
5C120E	E	7/8 - 3 1/2	A-Web	12.0	12.4	1 5/32	2 3/4	1 11/32	52.03
5C130E	E	7/8 - 3 1/2	A-Arm	13.0	13.4	1 5/32	2 3/4	1 11/32	52.80
5C140E	E	7/8 - 3 1/2	A-Arm	14.0	14.4	1 5/32	2 3/4	1 11/32	57.10
5C150E	E	7/8 - 3 1/2	A-Arm	15.0	15.4	1 5/32	2 3/4	1 11/32	61.42
5C160E	E	7/8 - 3 1/2	A-Arm	16.0	16.4	1 5/32	2 3/4	1 11/32	66.58
5C180E	E	7/8 - 3 1/2	A-Arm	18.0	18.4	1 5/32	2 3/4	1 11/32	75.84
5C200F	F	1-4	A-Arm	20.0	20.4	1/32	3 5/8	1 19/32	93.70
5C240F	F	1-4	A-Arm	24.0	24.4	1/32	3 5/8	1 19/32	116.84
5C270F	F	1-4	A-Arm	27.0	27.4	1/32	3 5/8	1 19/32	141.10
5C300F	F	1-4	A-Arm	30.0	30.4	1/32	3 5/8	1 19/32	163.14
5C360J	J	1 1/2 - 4 1/2	A-Arm	36.0	36.4	1/16	4 5/8	9/16	232.59
5C440J	J	1 1/2 - 4 1/2	A-Arm	44.0	44.4	1/16	4 5/8	9/16	293.20
5C500J	J	1 1/2 - 4 1/2	A-Arm	50.0	50.4	1/16	4 5/8	9/16	348.33
6 GROOVES, F = 6 1/4"									
6C55SD	SD	1/2" - 2"	A-Sol.	5.5	5.9	1 7/32	1 13/16	3 7/32	
6C60SF	SF	1/2" - 2 15/16"	A-Sol.	6.0	6.4	1 1/32	2 1/16	3 5/32	14.00
6C70SF	SF	1/2 - 2 15/16	A-Sol.	7.0	7.4	1 1/32	2 1/16	3 5/32	23.26
6C75SF	SF	1/2 - 2 15/16	A-Sol.	7.5	7.9	1 1/32	2 1/16	3 5/32	26.57
6C80E	E	7/8 - 3 1/2	A-Sol.	8.0	8.4	1 5/32	2 3/4	2 11/32	29.76
6C85E	E	7/8 - 3 1/2	A-Sol.	8.5	8.9	1 5/32	2 3/4	2 11/32	33.95
6C90F	F	1-4	A-Sol.	9.0	9.4	1 5/32	3 5/8	1 15/32	41.34
6C95F	F	1-4	A-Sol.	9.5	9.9	1 5/32	3 5/8	1 15/32	46.74
6C100F	F	1-4	A-Sol.	10.0	10.4	1 5/32	3 5/8	1 15/32	52.51
6C105F	F	1-4	A-Web	10.5	10.9	1 5/32	3 5/8	1 15/32	55.12
6C110F	F	1-4	A-Web	11.0	11.4	1 5/32	3 5/8	1 15/32	56.44
6C120F	F	1-4	A-Web	12.0	12.4	1 5/32	3 5/8	1 15/32	65.61
6C130F	F	1-4	A-Arm	13.0	13.4	1 5/32	3 5/8	1 15/32	67.46
6C140F	F	1-4	A-Arm	14.0	14.4	1 5/32	3 5/8	1 15/32	72.97
6C150F	F	1-4	A-Arm	15.0	15.4	1 5/32	3 5/8	1 15/32	77.16
6C160F	F	1-4	A-Arm	16.0	16.4	1 5/32	3 5/8	1 15/32	83.89
6C180F	F	1-4	A-Arm	18.0	18.4	1 5/32	3 5/8	1 15/32	97.89
6C200F	F	1-4	A-Arm	20.0	20.4	21/32	3 5/8	1 31/32	109.24
6C240F	F	1-4	A-Arm	24.0	24.4	21/32	3 5/8	1 31/32	138.89
6C270J	J	1 1/2 - 4 1/2	A-Arm	27.0	27.4	1/16	4 5/8	1 9/16	165.35
6C300J	J	1 1/2 - 4 1/2	A-Arm	30.0	30.4	1/16	4 5/8	1 9/16	194.01
6C360J	J	1 1/2 - 4 1/2	A-Arm	36.0	36.4	1/16	4 5/8	1 9/16	238.10
6C440J	J	1 1/2 - 4 1/2	A-Arm	44.0	44.4	1/16	4 5/8	1 9/16	321.87
6C500M	M	2 - 5 1/2	C-Arm	50.0	50.4	3/16	6 3/4	11/16	436.52

Table No.5 Specifications

Part No.	Bushing	Bore Range	Type	Datum "C"	O.D.	E	L	M	Wt. Less Bush.
8 GROOVES, F =8 1/4"									
8C70SF	SF	1/2 - 2 15/16	A-Sol.	7.0	7.4	2 9/32	2 1/16	3 29/32	29.21
8C80E	E	7/8 - 3 1/2	A-Sol.	8.0	8.4	2 1/32	2 3/4	3 15/32	37.92
8C85E	E	7/8 - 3 1/2	A-Sol.	8.5	8.9	2 1/32	2 3/4	3 15/32	41.12
8C90F	F	1-4	A-Sol.	9.0	9.4	2 1/32	3 5/8	2 19/32	49.60
8C95F	F	1-4	A-Sol.	9.5	9.9	2 1/32	3 5/8	2 19/32	55.56
8C100F	F	1-4	A-Sol.	10.0	10.4	2 1/32	3 5/8	2 19/32	61.95
8C105F	F	1-4	A-Web	10.5	10.9	2 1/32	3 5/8	2 19/32	63.93
8C110F	F	1-4	A-Web	11.0	11.4	2 1/32	3 5/8	2 19/32	68.48
8C120F	F	1-4	A-Arm	12.0	12.4	2 1/32	3 5/8	2 19/32	74.96
8C130F	F	1-4	A-Arm	13.0	13.4	2 1/32	3 5/8	2 19/32	84.88
8C140F	F	1-4	A-Arm	14.0	14.4	2 1/32	3 5/8	2 19/32	90.83
8C160F	F	1-4	A-Arm	16.0	16.4	2 1/32	3 5/8	2 19/32	103.62
8C180F	F	1-4	A-Arm	18.0	18.4	2 1/32	3 5/8	2 19/32	114.20
8C200J	J	1 1/2 - 4 1/2	A-Arm	20.0	20.4	1/16	4 5/8	3 9/16	153.22
8C240J	J	1 1/2 - 4 1/2	A-Arm	24.0	24.4	1/16	4 5/8	3 9/16	195.64
8C270J	J	1 1/2 - 4 1/2	A-Arm	27.0	27.4	1/16	4 5/8	3 9/16	222.66
8C300J	J	1 1/2 - 4 1/2	A-Arm	30.0	30.4	1/16	4 5/8	3 9/16	246.92
8C360M	M	2 - 5 1/2	A-Arm	36.0	36.4	1/4	6 3/4	1 1/4	357.15
8C440M	M	2 - 5 1/2	A-Arm	44.0	44.4	1/4	6 3/4	1 1/4	465.17
8C500M	M	2 - 5 1/2	A-Arm	50.0	50.4	1/4	6 3/4	1 1/4	551.15
10 GROOVES, F =10 1/4"									
10C80E	E	7/8-3 1/2	A-Sol.	8.0	8.4	2 1/32	2 3/4	5 15/32	44.53
10C85E	E	7/8-3 1/2	A-Sol.	8.5	8.9	2 1/32	2 3/4	5 15/32	50.66
10C90J	J	1 1/2-4 1/2	A-Sol.	9.0	9.4	2 1/16	4 5/8	3 9/16	51.54
10C95J	J	1 1/2-4 1/2	A-Sol.	9.5	9.9	2 1/16	4 5/8	3 9/16	63.36
10C100J	J	1 1/2-4 1/2	A-Sol.	10.0	10.4	2 1/16	4 5/8	3 9/16	72.75
10C105J	J	1 1/2-4 1/2	A-Sol.	10.5	10.9	2 1/16	4 5/8	3 9/16	80.16
10C110J	J	1 1/2-4 1/2	A-Sol.	11.0	11.4	2 1/16	4 5/8	3 9/16	90.17
10C120J	J	1 1/2-4 1/2	A-Sol.	12.0	12.4	2 1/16	4 5/8	3 9/16	106.88
10C130J	J	1 1/2-4 1/2	A-Arm	13.0	13.4	2 1/16	4 5/8	3 9/16	107.50
10C140J	J	1 1/2-4 1/2	A-Arm	14.0	14.4	2 1/16	4 5/8	3 9/16	116.84
10C160J	J	1 1/2-4 1/2	A-Arm	16.0	16.4	2 1/16	4 5/8	3 9/16	103.18
10C180J	J	1 1/2-4 1/2	A-Arm	18.0	18.4	2 1/16	4 5/8	3 9/16	160.93
10C200J	J	1 1/2-4 1/2	A-Arm	20.0	20.4	2 1/16	4 5/8	3 9/16	183.07
10C240M	M	2-5 1/2	A-Arm	24.0	24.4	1/4	6 3/4	3 1/4	260.15
10C300M	M	2-5 1/2	A-Arm	30.0	30.4	1/4	6 3/4	3 1/4	330.70
10C360M	M	2-5 1/2	A-Arm	36.0	36.4	1/4	6 3/4	3 1/4	423.29
10C440M	M	2-5 1/2	A-Arm	44.0	44.4	1/4	6 3/4	3 1/4	443.12
10C500M	M	2-5 1/2	A-Arm	50.0	50.4	1/4	6 3/4	3 1/4	628.31
12 GROOVES, F =12 1/4"									
12C90J	J	1 1/2-4 1/2	A-Sol.	9.0	9.4	2 9/16	4 5/8	5 1/16	57.43
12C95J	J	1 1/2-4 1/2	A-Sol.	9.5	9.9	2 9/16	4 5/8	5 1/16	65.00
12C100J	J	1 1/2-4 1/2	A-Sol.	10.0	10.4	2 9/16	4 5/8	5 1/16	82.70
12C105J	J	1 1/2-4 1/2	A-Sol.	10.5	10.9	2 9/16	4 5/8	5 1/16	71.43
12C110J	J	1 1/2-4 1/2	A-Sol.	11.0	11.4	2 9/16	4 5/8	5 1/16	95.21
12C120J	J	1 1/2-4 1/2	A-Web	12.0	12.4	2 9/16	4 5/8	5 1/16	114.64
12C130J	J	1 1/2-4 1/2	A-Arm	13.0	13.4	2 9/16	4 5/8	5 1/16	117.95
12C140J	J	1 1/2-4 1/2	A-Arm	14.0	14.4	2 9/16	4 5/8	5 1/16	133.38
12C160J	J	1 1/2-4 1/2	A-Arm	16.0	16.4	2 9/16	4 5/8	5 1/16	157.63
12C180J	J	1 1/2-4 1/2	A-Arm	18.0	18.4	2 9/16	4 5/8	5 1/16	181.88
12C200M	M	2-5 1/2	A-Arm	20.0	20.4	1/4	6 3/4	5 1/4	232.58
12C240M	M	2-5 1/2	A-Arm	24.0	24.4	1/4	6 3/4	5 1/4	286.60
12C300M	M	2-5 1/2	A-Arm	30.0	30.4	1/4	6 3/4	5 1/4	365.97
12C360M	M	2-5 1/2	A-Arm	36.0	36.4	1/4	6 3/4	5 1/4	477.29
12C440M	M	2-5 1/2	A-Arm	44.0	44.4	1/4	6 3/4	5 1/4	636.02
12C500M	M	2-5 1/2	A-Arm	50.0	50.4	1/4	6 3/4	5 1/4	640.50

series C