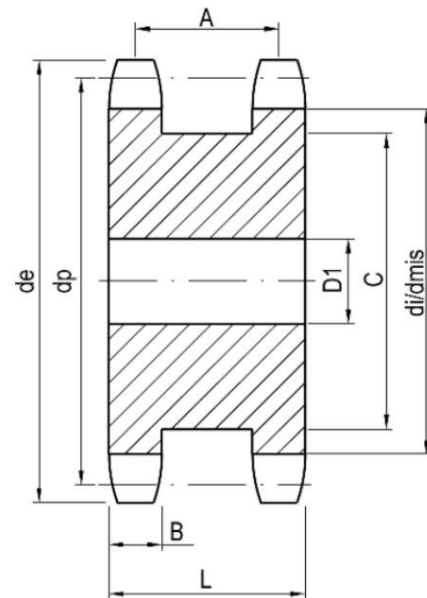


# Duplex Platewheels For Two Single Roller Chains



## For Roller Chains DIN8187-ISO/R606



Duplex  
Platewheels

Type	Z	d <sub>e</sub>	d <sub>p</sub>	d <sub>i</sub>	d <sub>mis</sub>	D	A	B h14	Cmax	L
3/8" X 7/32" R6.35  06B-1	13	43	39.80	33.45	33.16	10	20.3	5.3	28	25.5
	15	49.3	45.81	39.46	39.21	10	20.3	5.3	34	25.5
	17	55.3	51.84	45.49	45.27	12	20.3	5.3	40	25.5
	19	61.3	57.87	51.52	51.32	12	20.3	5.3	46	25.5
	21	68	63.91	57.56	57.38	15	20.3	5.3	52	25.5
	23	73.5	69.95	63.60	63.44	15	20.3	5.3	59	25.5
	25	80	76.00	69.65	69.50	15	20.3	5.3	65	25.5
1/2" X 5/16" R8.51  08B-1	13	57.4	53.07	44.56	44.17	10	24.8	7.2	37	32
	15	65.5	61.08	52.57	52.24	10	24.8	7.2	45	32
	17	73.6	69.12	60.61	60.31	12	24.8	7.2	53	32
	19	81.7	77.16	68.65	68.39	12	24.8	7.2	62	32
	21	89.7	85.21	76.71	76.46	15	24.8	7.2	70	32
	23	98.2	93.27	84.76	84.54	15	24.8	7.2	78	32
	25	105.8	101.33	92.82	92.62	15	24.8	7.2	86	32
5/8" X 3/8" R10.16  10B-1	13	73	66.33	56.17	55.69	15	27.9	9.1	48	37
	15	83	76.35	66.19	65.78	15	27.9	9.1	58	37
	17	93	86.39	76.23	75.87	15	27.9	9.1	68	37
	19	103.3	96.45	86.29	85.96	19	27.9	9.1	79	37
	21	113.4	106.51	96.35	96.06	19	27.9	9.1	89	37
	23	123.4	116.59	106.43	106.15	19	27.9	9.1	99	37
	25	134	126.66	116.50	116.25	19	27.9	9.1	109	37
3/4" X 7/16" R12.07  12B-1	13	87.5	79.60	67.53	66.95	20	33.9	11.1	59	45
	15	99.8	91.63	79.56	79.05	20	33.9	11.1	71	45
	17	111.5	103.67	91.60	91.18	20	33.9	11.1	83	45
	19	124.2	115.74	103.67	103.27	20	33.9	11.1	95	45
	21	136	127.82	115.75	115.39	24	33.9	11.1	107	45
	23	149	139.90	127.83	127.51	24	33.9	11.1	119	45
	25	160	151.99	139.92	139.62	24	33.9	11.1	131	45
1" X 17.02 R15.88  16B-1	13	117	106.14	90.26	89.48	24	47.8	16.2	78	64
	15	133	122.17	106.29	105.62	24	47.8	16.2	95	64
	17	149	138.23	122.35	121.76	24	47.8	16.2	111	64
	19	165.2	154.32	138.44	137.91	24	47.8	16.2	127	64
	21	181.2	170.42	154.54	154.06	24	47.8	16.2	143	64