

Cast iron:GG20

Screw Specification:5/8-11BSW×1-1/4

Transmissible torque: 2710Nm

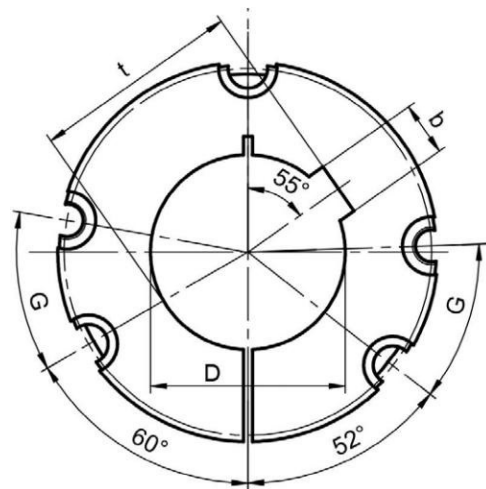
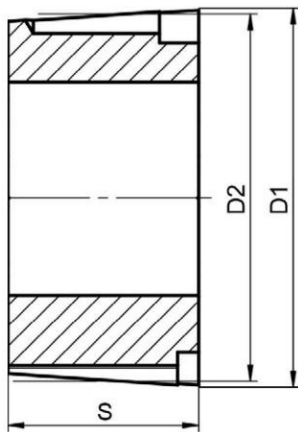
Tools for tighten: Allen wrench 5/16"

Screws Quantity: 2

Screw tightening torque:90Nm

Bore In Inches

Product Model	D1	D2	S	D (G7)	b	t	Weight (Kg)
3030-1-3/16	4.247"	4"	3"	1-3/16"	5/16"	D+1/8"	3.96
3030-1-1/4				1-1/4"		D+1/8"	3.96
3030-1-3/8				1-3/8"	3/8"	D+1/8"	3.84
3030-1-7/16				1-7/16"		D+1/8"	3.8
3030-1-1/2				1-1/2"		D+1/8"	3.77
3030-1-5/8				1-5/8"	7/16"	D+5/32"	3.65
3030-1-11/16				1-11/16"		D+5/32"	3.56
3030-1-3/4				1-3/4"		D+5/32"	3.52
3030-1-7/8				1-7/8"	1/2"	D+5/32"	3.6
3030-1-15/16				1-15/16"		D+5/32"	3.36
3030-2				2"		D+5/32"	3.26
3030-2-1/8				2-1/8"	5/8"	D+7/32"	3.08
3030-2-3/16				2-3/16"		D+7/32"	3.16
3030-2-1/4				2-1/4"		D+7/32"	2.8
3030-2-3/8				2-3/8"		D+7/32"	2.8
3030-2-7/16				2-7/16"		D+7/32"	2.7
3030-2-1/2				2-1/2"		D+7/32"	2.6
3030-2-5/8				2-5/8"	3/4"	D+1/4"	2.41
3030-2-3/4				2-3/4"		D+1/4"	2.28
3030-2-7/8				2-7/8"		D+1/4"	2.04
3030-2-15/16				2-15/16"		D+1/4"	1.9
3030-3				3"		D+1/4"	1.86



Cast iron:GG20

Screw Specification:1/2-12BSW×1-1/2

Transmissible torque: 5060Nm

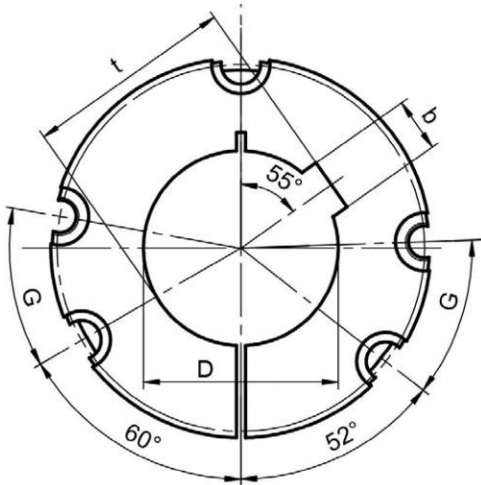
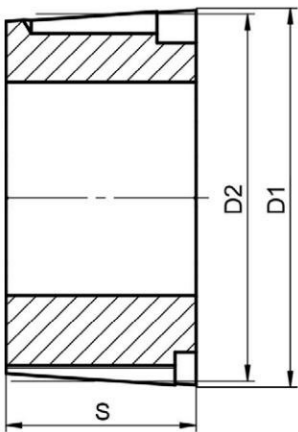
Bore In Metric

Tools for tighten: Allen wrench 3/8"

Screws Quantity: 3

Screw tightening torque:112Nm

Product Model	D1	D2	S	D (G7)	b	Js9	t	Weight (Kg)	
3525-24MM	126.8	122.68	63.5	24	8	±0.018	D+3.3	4.97	
3525-25MM				25			D+3.3	4.95	
3525-28MM				28			D+3.3	4.86	
3525-30MM				30			D+3.3	4.9	
3525-32MM				32	10		D+3.3	4.8	
3525-35MM				35			D+3.3	4.7	
3525-37MM				37			D+3.3	4.69	
3525-38MM				38			D+3.3	4.68	
3525-40MM				40	12	±0.021	D+3.3	4.54	
3525-42MM				42			D+3.3	4.52	
3525-43MM				43			D+3.3	4.4	
3525-45MM				45	14		D+3.8	4.43	
3525-48MM				48			D+3.8	4.34	
3525-50MM				50			D+3.8	4.29	
3525-54MM				54	16		D+4.3	4.1	
3525-55MM				55			D+4.3	4.08	
3525-56MM				56			D+4.3	4	
3525-60MM				60	18		±0.026	D+4.4	3.86
3525-65MM				65				D+4.4	3.65
3525-70MM				70	20	D+4.9		3.42	
3525-72MM				72		D+4.9		3.3	
3525-75MM				75		D+4.9		3.16	
3525-80MM				80	22	D+5.4		2.86	
3525-85MM				85		D+5.4		2.57	
3525-89MM				89	25	D+5.4		2.25	
3525-90MM				90		D+5.4		2.25	
3525-95MM				95		D+5.4	1.91		
3525-100MM				100	28	D+4.4	1.58		



Cast iron:GG20

Screw Specification:1/2-12BSW×1-1/2

Transmissible torque: 5060Nm

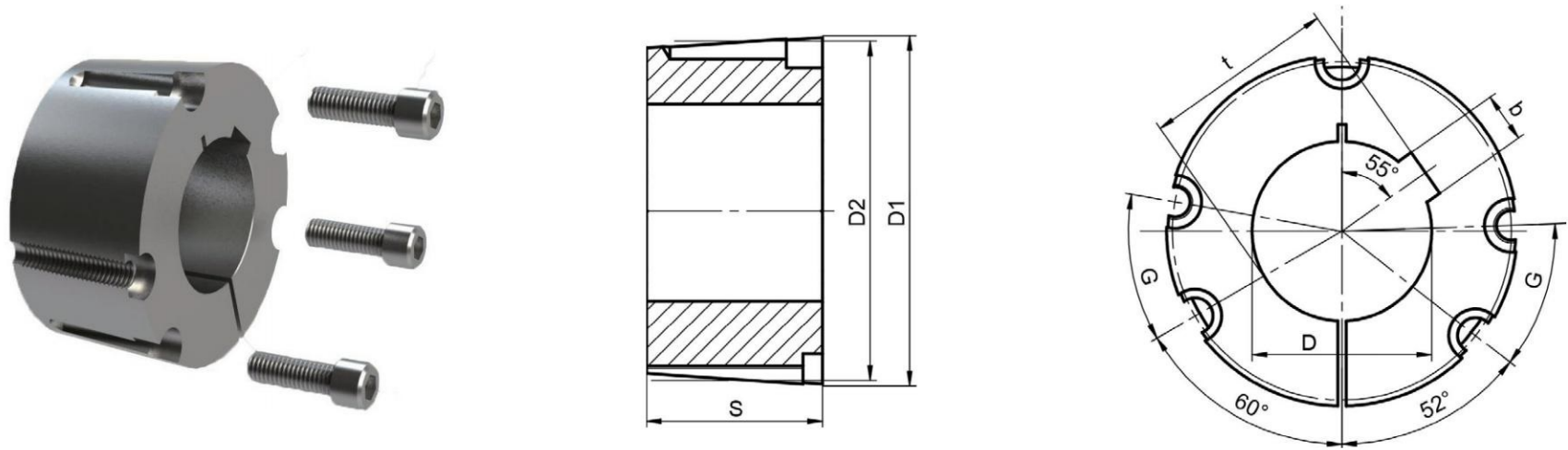
Bore In Inches

Tools for tighten: Allen wrench 3/8"

Screws Quantity: 3

Screw tightening torque:112Nm

Product Model	D1	D2	S	D (G7)	b	t	Weight (Kg)
3525-1-1/4	4.992"	4.83"	2.5"	1-1/4"	5/16"	D+1/8"	4.78
3525-1-3/8				1-3/8"	3/8"	D+1/8"	4.71
3525-1-1/2				1-1/2"		D+1/8"	4.66
3525-1-5/8				1-5/8"	7/16"	D+5/32"	4.54
3525-1-3/4				1-3/4"		D+5/32"	4.45
3525-1-7/8				1-7/8"	1/2"	D+5/32"	4.37
3525-2				2"		D+5/32"	4.27
3525-2-1/8				2-1/8"	5/8"	D+7/32"	4.11
3525-2-3/16				2-3/16"		D+7/32"	4.05
3525-2-1/4				2-1/4"		D+7/32"	4
3525-2-3/8				2-3/8"		D+7/32"	3.86
3525-2-7/16				2-7/16"		D+7/32"	3.8
3525-2-1/2				2-1/2"		D+7/32"	3.71
3525-2-5/8				2-5/8"	3/4"	D+1/4"	3.55
3525-2-3/4				2-3/4"		D+1/4"	3.38
3525-2-7/8				2-7/8"		D+1/4"	3.38
3525-2-15/16				2-15/16"		D+1/4"	3.17
3525-3				3"	7/8"	D+1/4"	3.02
3525-3-1/8				3-1/8"		D+5/16"	2.88
3525-3-1/4				3-1/4"		D+5/16"	2.69
3525-3-5/16				3-5/16"		D+5/16"	2.56
3525-3-3/8				3-3/8"		D+5/16"	2.5
3525-3 7/16				3-7/16"		D+5/16"	2.28
3525-3-1/2				3-1/2"		D+5/16"	2.26
3525-3-5/8				3 5/8"	1"	D+1/4"	2
3525-3-11/16				3-11/16"		D+1/4"	1.97
3525-3-3/4				3-3/4"		D+1/4"	1.91



Cast iron:GG20

Screw Specification:1/2-12BSW×1-1/2

Transmissible torque: 5060Nm

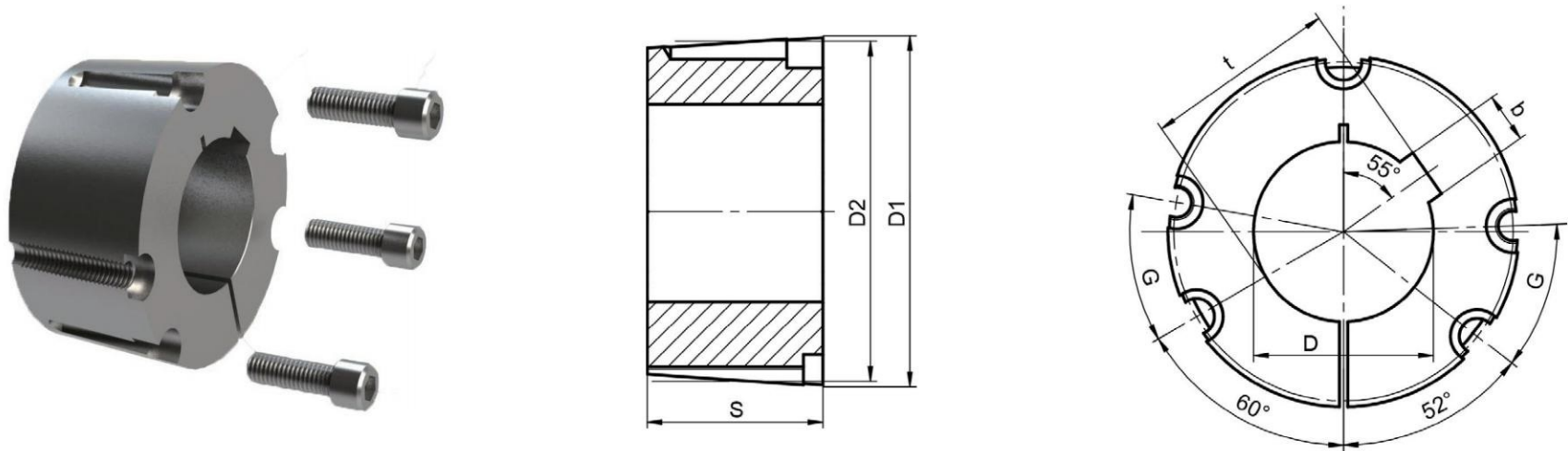
Tools for tighten: Allen wrench 3/8"

Screws Quantity: 3

Screw tightening torque:112Nm

Bore In Metric

Product Model	D1	D2	S	D (G7)	b	Js9	t	Weight (Kg)
3535-24MM	126.8	122.68	89	24	8	±0.018	D+3.3	7.1
3535-25MM				25			D+3.3	6.73
3535-28MM				28			D+3.3	6.58
3535-30MM				30			D+3.3	6.54
3535-32MM				32	10		D+3.3	6.6
3535-35MM				35			D+3.3	6.38
3535-36MM				36			D+3.3	6.38
3535-37MM				37			D+3.3	6.35
3535-38MM				38			D+3.3	6.32
3535-40MM				40	12	±0.021	D+3.3	6.24
3535-42MM				42			D+3.3	6.15
3535-45MM				45	14		D+3.8	6.02
3535-46MM				46			D+3.8	5.96
3535-48MM				48			D+3.8	5.8
3535-49MM				49			D+3.8	5.8
3535-50MM				50			D+3.8	5.65
3535-52MM				52	16		D+4.3	5.66
3535-55MM				55			D+4.3	5.25
3535-60MM				60	18		D+4.4	5.23
3535-64MM				64			D+4.4	4.95
3535-65MM				65			D+4.4	4.92
3535-68MM				68	20	±0.026	D+4.9	4.73
3535-70MM				70			D+4.9	4.5
3535-72MM				72			D+4.9	4.46
3535-74MM				74			D+4.9	4.35
3535-75MM				75			D+4.9	4.3
3535-78MM				78	22		D+5.4	4
3535-80MM				80			D+5.4	3.85
3535-85MM				85			D+5.4	3.06
3535-89MM				89	25		D+5.4	3.06
3535-90MM				90			D+5.4	2.5
3535-95MM				95			D+5.4	1.96



Cast iron:GG20

Screw Specification:1/2-12BSW×1-1/2

Transmissible torque: 5060Nm

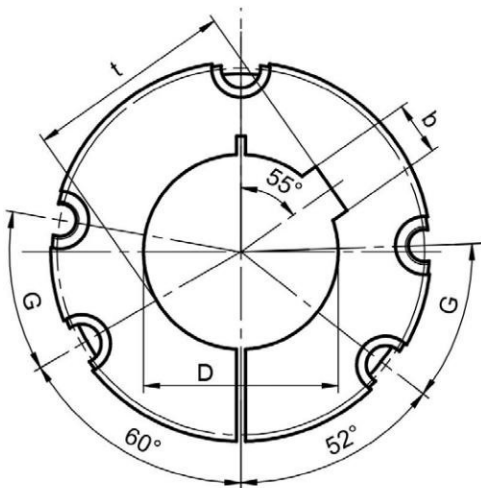
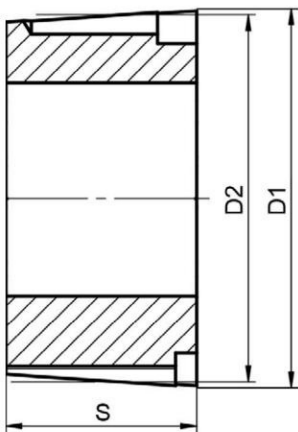
Bore In Inches

Tools for tighten: Allen wrench 3/8"

Screws Quantity: 3

Screw tightening torque:112Nm

Product Model	D1	D2	S	D (G7)	b	t	Weight (Kg)
3535-1	4.992"	4.83"	3.5"	1"	1/4"	D+1/8"	6.87
3535-1-1/8				1 1/8"	5/16"	D+1/8"	6.7
3535-1-3/16				1-3/16"		D+1/8"	6.5
3535-1-1/4				1-1/4"		D+1/8"	6.32
3535-1-3/8				1-3/8"	3/8"	D+1/8"	6.31
3535-1-7/16				1-7/16"		D+1/8"	6.3
3535-1-1/2				1-1/2"		D+1/8"	6.28
3535-1-5/8				1-5/8"	7/16"	D+5/32"	6.15
3535-1-11/16				1-11/16"		D+5/32"	6.14
3535-1-3/4				1-3/4"		D+5/32"	6
3535-1-7/8				1-7/8"	1/2"	D+5/32"	5.88
3535-1-15/16				1-15/16"		D+5/32"	5.8
3535-2				2"		D+5/32"	5.78
3535-2-1/8				2-1/8"	5/8"	D+7/32"	5.58
3535-2-3/16				2-3/16"		D+7/32"	5.49
3535-2-1/4				2-1/4"		D+7/32"	5.38
3535-2-3/8				2-3/8"		D+7/32"	5.21
3535-2-7/16				2-7/16"		D+7/32"	5.12
3535-2-1/2				2-1/2"		D+7/32"	5.02
3535-2-5/8				2-5/8"	3/4"	D+1/4"	4.8
3535-2-11/16				2-11/16"		D+1/4"	4.73
3535-2-3/4				2-3/4"		D+1/4"	4.62
3535-2-7/8				2-7/8"		D+1/4"	4.37
3535-2-15/16				2-15/16"		D+1/4"	4.26
3535-3				3"		D+1/4"	4.09
3535-3-1/8				3-1/8"	7/8"	D+5/16"	4.08
3535-3-3/16				3-3/16"		D+5/16"	3.9
3535-3-1/4				3-1/4"		D+5/16"	3.6
3535-3-5/16				3-5/16"		D+5/16"	3.46
3535-3-3/8				3-3/8"		D+5/16"	3.34
3535-3-7/16				3-7/16"		D+5/16"	3.32
3535-3-1/2				3-1/2"		D+5/16"	3.03



Cast iron:GG20

Screw Specification:5/8-11BSW×1-3/4

Transmissible torque: 8740Nm

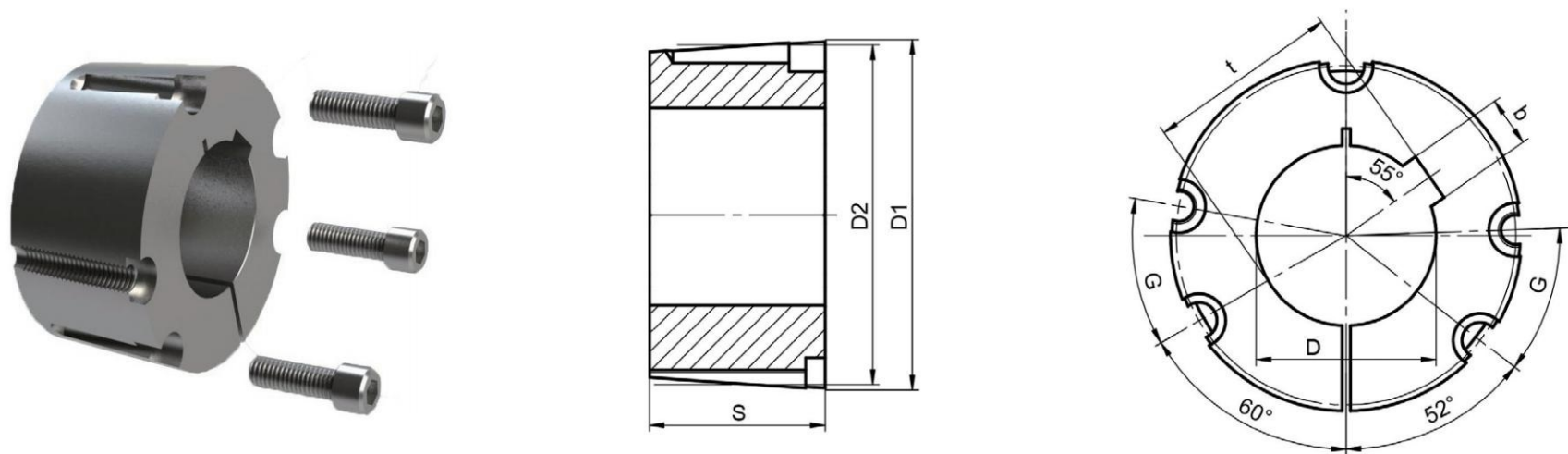
Tools for tighten: Allen wrench 1/2"

Screws Quantity: 3

Screw tightening torque:169Nm

Bore In Metric

Product Model	D1	D2	S	D (G7)	b	Js9	t	Weight (Kg)
4030-40MM	145.85	140.7	76.2	40	12	±0.021	D+3.3	7.47
4030-42MM				42			D+3.3	7.4
4030-45MM				14	D+3.8		7.2	
4030-48MM					D+3.8		7.1	
4030-50MM					D+3.8		7.03	
4030-55MM				55	16		D+4.3	6.8
4030-60MM				18	18	D+4.4	6.6	
4030-65MM						D+4.4	6.29	
4030-70MM				20	20	D+4.9	6.1	
4030-75MM						D+4.9	5.68	
4030-80MM				22	22	D+5.4	5.38	
4030-85MM						D+5.4	5.02	
4030-90MM				25	25	D+5.4	4.62	
4030-95MM						D+5.4	4.2	
4030-100MM				28	28	D+4.4	3.6	
4030-105MM						D+6.4	3.36	
4030-110MM						D+6.4	2.87	
4030-115MM				115	32	±0.031	D+5.4	2.87



Cast iron:GG20

Screw Specification:5/8-11BSW×1-3/4

Transmissible torque: 8740Nm

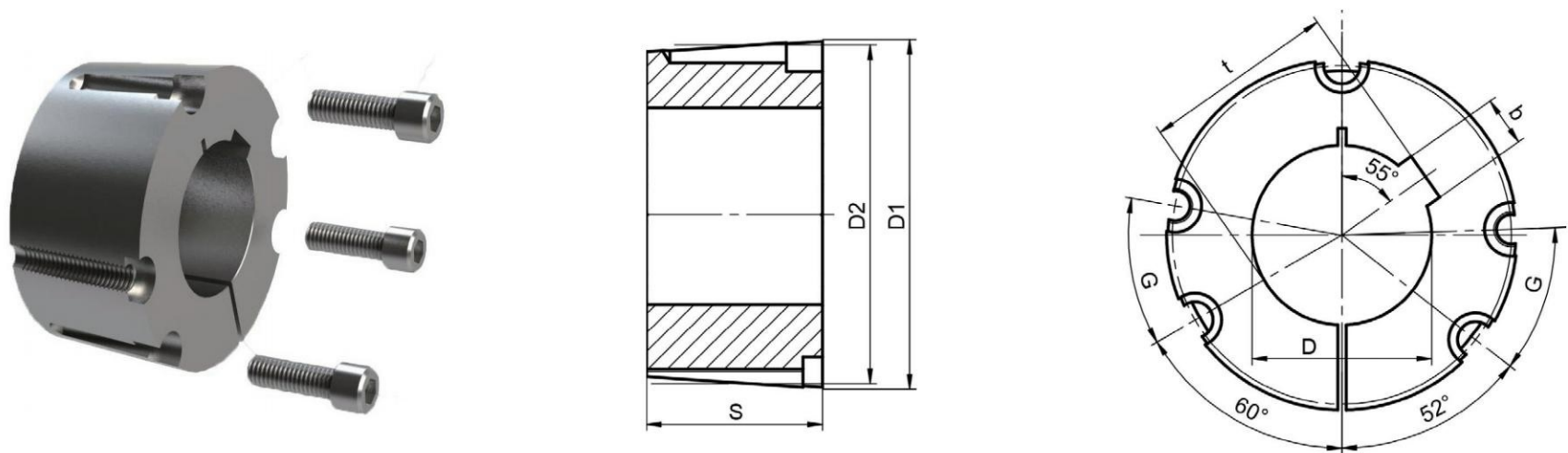
Tools for tighten: Allen wrench 1/2"

Screws Quantity: 3

Screw tightening torque:169Nm

Bore In Inches

Product Model	D1	D2	S	D (G7)	b	t	Weight (Kg)
4030-1-1/2	5.742"	5.54"	3"	1-1/2"	3/8"	D+1/8"	8.2
4030-1-3/4				1-3/4"	7/16"	D+5/32"	7.3
4030-1-7/8				1-7/8"	1/2"	D+5/32"	7.14
4030-1-15/16				1-15/16"		D+5/32"	7.05
4030-2				2"	5/8"	D+5/32"	7
4030-2-1/8				2-1/8"		D+7/32"	6.82
4030-2-1/4				2-1/4"		D+7/32"	6.69
4030-2-3/8				2-3/8"		D+7/32"	6.53
4030-2-7/16				2-7/16"		D+7/32"	6.7
4030-2-1/2				2-1/2"		D+7/32"	6.7
4030-2-5/8				2-5/8"	3/4"	D+1/4"	6.15
4030-2-3/4				2-3/4"		D+1/4"	6.1
4030-2-7/8				2-7/8"		D+1/4"	5.8
4030-3				3"		D+1/4"	5.58
4030-3-1/8				3-1/8"	7/8"	D+5/16"	5.38
4030-3-1/4				3-1/4"		D+5/16"	5.14
4030-3-3/8				3-3/8"		D+5/16"	5
4030-3-7/16				3-7/16"		D+5/16"	5.08
4030-3-1/2				3-1/2"		D+5/16"	4.68
4030-3-3/4				3-3/4"	1"	D+3/8"	4.13
4030-4				4"		D+3/8"	3.6



Cast iron:GG20

Screw Specification:5/8-11BSW×1-3/4

Transmissible torque: 8740Nm

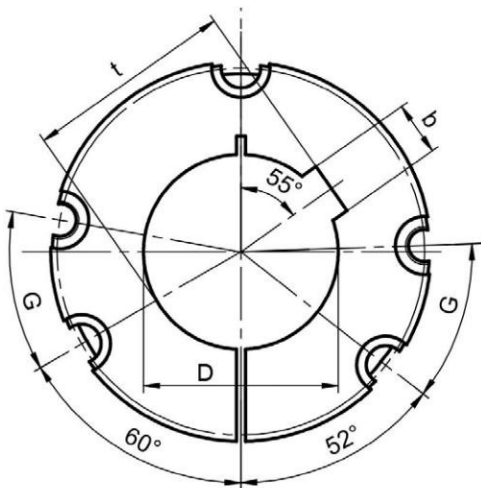
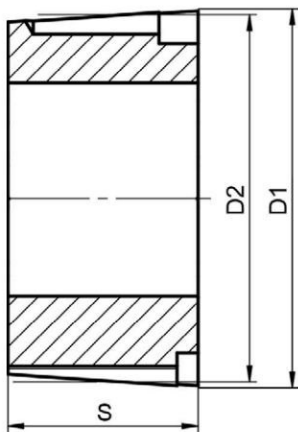
Bore In Metric

Tools for tighten: Allen wrench 1/2"

Screws Quantity: 3

Screw tightening torque:169Nm

Product Model	D1	D2	S	D (G7)	b	Js9	t	Weight (Kg)	
4040-26MM	145.85	140.72	101.6	26	8	±0.018	D+3.3	10.05	
4040-35MM				35	10		D+3.3	9.86	
4040-38MM							38	D+3.3	9.78
4040-40MM				40	12	±0.021	D+3.3	9.62	
4040-42MM				42			D+3.3	9.62	
4040-45MM				45	14		D+3.8	9.38	
4040-48MM				48			D+3.8	9.26	
4040-50MM				50			D+3.8	9.2	
4040-55MM				55	16		±0.026	D+4.3	8.87
4040-58MM				58				D+4.3	8.6
4040-60MM				60	18			D+4.4	8.55
4040-65MM				65				D+4.4	8.19
4040-66MM				66	20	±0.026		D+4.9	8.1
4040-70MM				70				D+4.9	7.8
4040-75MM				75				D+4.9	7.39
4040-80MM				80	22			D+5.4	6.89
4040-85MM				85				D+5.4	6.46
4040-88MM				88	25		D+5.4	6.46	
4040-90MM				90			D+5.4	5.97	
4040-95MM				95			D+5.4	4.99	
4040-99MM				99	28		±0.026	D+6.4	4.99
4040-100MM				100				D+4.4	4.85
4040-105MM				105				D+6.4	4.26
4040-110MM				110				D+6.4	3.64



Cast iron:GG20

Screw Specification:5/8-11BSW×1-3/4

Transmissible torque: 8740Nm

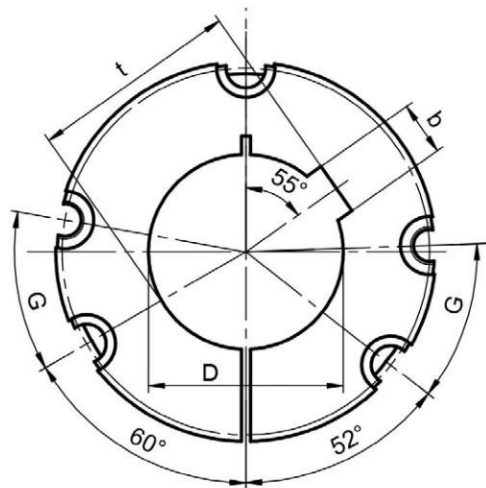
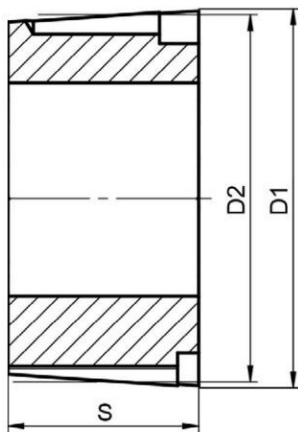
Bore In Inches

Tools for tighten: Allen wrench 1/2"

Screws Quantity: 3

Screw tightening torque:169Nm

Product Model	D1	D2	S	D (G7)	b	t	Weight (Kg)
4040-1-3/4	5.742"	5.54"	4"	1-3/4"	7/16"	D+5/32"	9.44
4040-1-7/8				1-7/8"	1/2"	D+5/32"	9.28
4040-2				2"		D+5/32"	9.12
4040-2-1/8				2-1/8"	5/8"	D+7/32"	8.9
4040-2-3/16				2-3/16"		D+7/32"	8.78
4040-2-1/4				2-1/4"		D+7/32"	8.68
4040-2-3/8				2-3/8"		D+7/32"	8.68
4040-2-7/16				2-7/16"		D+7/32"	8.66
4040-2-1/2				2-1/2"		D+7/32"	8.5
4040-2-5/8				2-5/8"	3/4"	D+1/4"	8.29
4040-2-3/4				2-3/4"		D+1/4"	7.72
4040-2-7/8				2-7/8"		D+1/4"	7.54
4040-2-15/16				2-15/16"		D+1/4"	7.5
4040-3				3"		D+1/4"	7.27
4040-3-1/8				3-1/8"	7/8"	D+5/16"	7.11
4040-3-1/4				3-1/4"		D+5/16"	6.66
4040-3-3/8				3-3/8"		D+5/16"	6.66
4040-3-7/16				3-7/16"		D+5/16"	6.48
4040-3-1/2				3-1/2"		D+5/16"	6.48
4040-3-11/16				3-11/16"	1"	D+3/8"	5.85
4040-3-5/8				3-5/8"		D+3/8"	5.66
4040-3-3/4				3-3/4"		D+3/8"	5.5
4040-3-7/8				3-7/8"		D+3/8"	5.26
4040-3-15/16				3-15/16"		D+3/8"	4.8
4040-4				4"		D+3/8"	4.6



Cast iron:GG20

Screw Specification:3/4-10BSW×2

Transmissible torque: 12400Nm

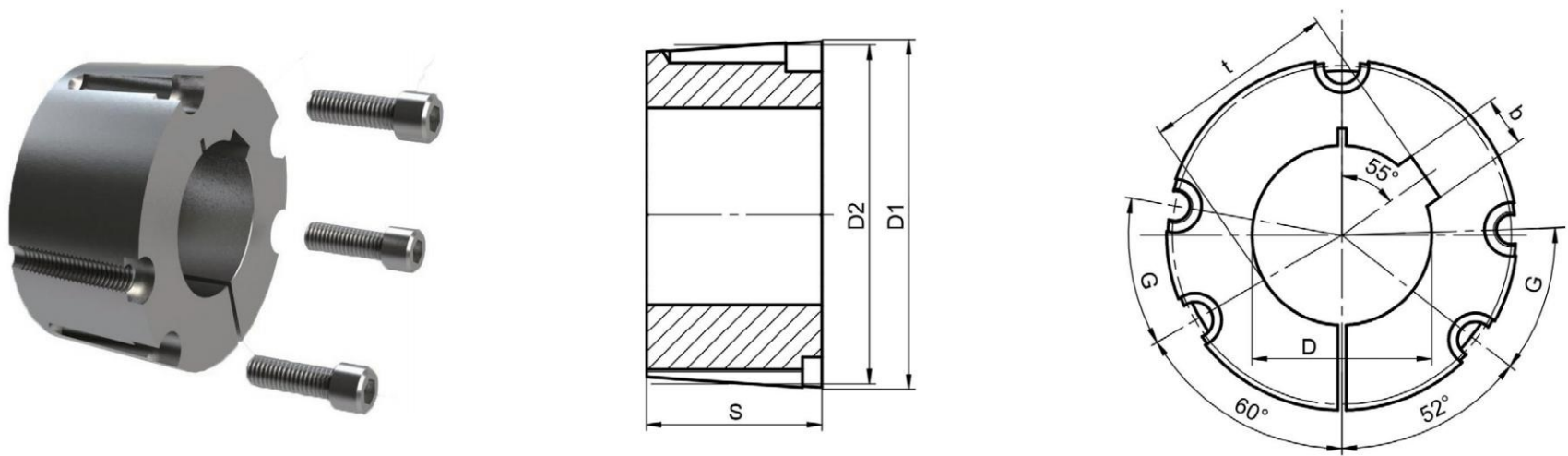
Bore In Metric

Tools for tighten: Allen wrench 9/16"

Screws Quantity: 3

Screw tightening torque:192Nm

Product Model	D1	D2	S	D (G7)	b	Js9	t	Weight (Kg)
4535-28MM	161.72	155.7	89	28	8	±0.018	D+3.3	11.06
4535-40MM				40	12	±0.021	D+3.3	10.78
4535-48MM				48	14		D+3.8	10.26
4535-50MM				50			D+3.8	10.05
4535-55MM				55	16		D+4.3	9.94
4535-60MM				60	18		D+4.4	9.62
4535-65MM				65			D+4.4	9.38
4535-70MM				70	20	±0.026	D+4.9	9.04
4535-75MM				75			D+4.9	8.64
4535-80MM				80	22		D+5.4	8.64
4535-85MM				85			D+5.4	7.46
4535-90MM				90	25		D+5.4	7.46
4535-95MM				95			D+5.4	6.95
4535-100MM				100	28	±0.031	D+6.4	6.48
4535-105MM				105			D+6.4	6.48
4535-110MM				110			D+6.4	5.8
4535-115MM				115	32		D+7.4	4.81
4535-120MM				120			D+7.4	4.24
4535-125MM				125			D+7.4	3.67



Cast iron:GG20

Screw Specification:3/4-10BSW×2

Transmissible torque: 12400Nm

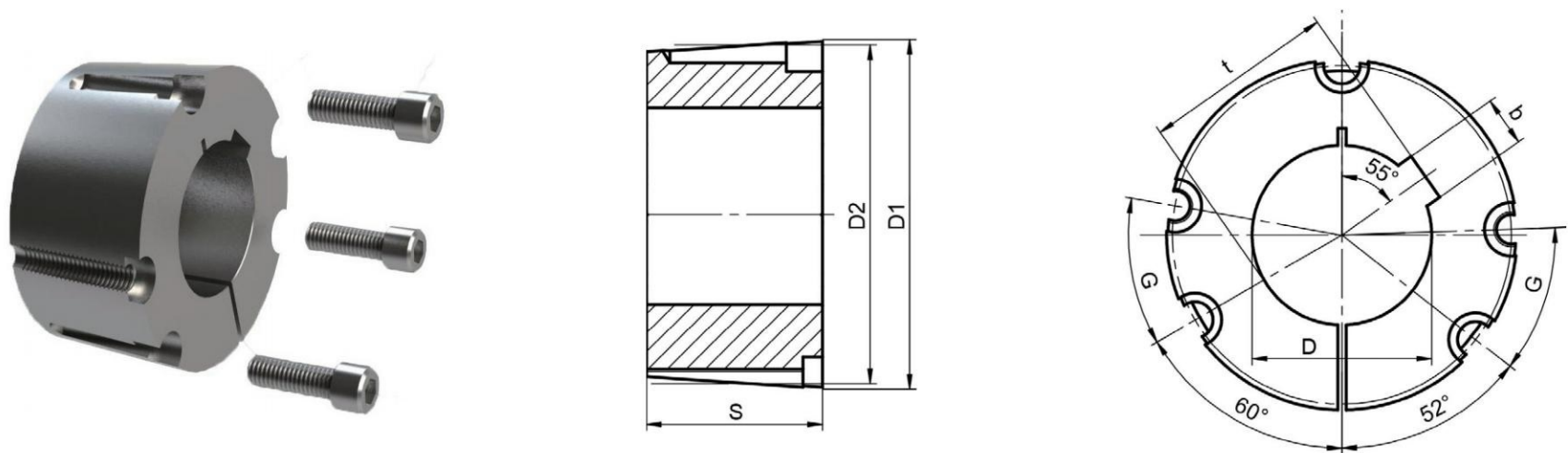
Tools for tighten: Allen wrench 9/16"

Screws Quantity: 3

Screw tightening torque:192Nm

Bore In Inches

Product Model	D1	D2	S	D [G7]	b	t	Weight [Kg]
4535-2-3/16	6.367"	6.13"	3.5"	2-3/16"	5/8"	D+7/32"	10.5
4535-2-1/4				2-1/4"		D+7/32"	9.74
4535-2-3/8				2-3/8"		D+7/32"	9.68
4535-2-1/2				2-1/2"		D+7/32"	9.41
4535-2-5/8				2-5/8"	3/4"	D+1/4"	9.21
4535-2-11/16				2-11/16"		D+1/4"	9.05
4535-2-3/4				2-3/4"		D+1/4"	8.97
4535-2-7/8				2-7/8"		D+1/4"	8.79
4535-3				3"		D+1/4"	8.51
4535-3-1/8				3-1/8"	7/8"	D+5/16"	8.26
4535-3-1/4				3-1/4"		D+5/16"	8.02
4535-3-3/8				3-3/8"		D+5/16"	7.79
4535-3-1/2				3-1/2"		D+5/16"	7.48
4535-3-5/8				3-5/8"	1"	D+3/8"	7.19
4535-3-3/4				3-3/4"		D+3/8"	6.9
4535-3-7/8				3-7/8"		D+3/8"	6.7
4535-4				4"		D+3/8"	6.29
4535-4-1/4				4-1/4"	1 1/4"	D+7/16"	5.52
4535-4-1/2				4-1/2"		D+7/16"	4.82
4535-4-3/4				4-3/4"		D+3/8"	4.08



Cast iron:GG20

Screw Specification:3/4-10BSW×2

Transmissible torque: 12400Nm

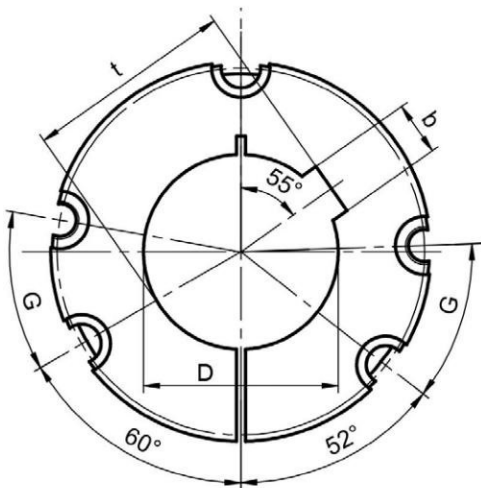
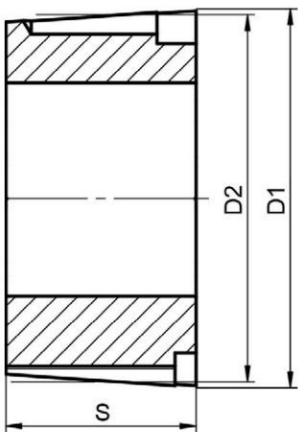
Tools for tighten: Allen wrench 9/16"

Screws Quantity: 3

Screw tightening torque:192Nm

Bore In Metric

Product Model	D1	D2	S	D (G7)	b	Js9	t	Weight (Kg)	
4545-35MM	161.72	155.7	114.3	35	10	±0.018	D+3.3	13.86	
4545-38MM				38			D+3.3	13.76	
4545-40MM				40	12	±0.021	D+3.3	13.62	
4545-42MM				42			D+3.3	13.39	
4545-45MM				45	14		D+3.8	13.2	
4545-48MM				48			D+3.8	12.9	
4545-50MM				50			D+3.8	12.88	
4545-55MM				55	16		±0.021	D+4.3	12.5
4545-60MM				60	18			D+4.4	12.16
4545-65MM				65			D+4.4	11.74	
4545-70MM				70	20	±0.026	D+4.9	11.3	
4545-75MM				75			D+4.9	10.88	
4545-80MM				80	22		D+5.4	10.45	
4545-85MM				85			D+5.4	9.92	
4545-88MM				88	25		D+5.4	9.56	
4545-90MM				90			D+5.4	9.31	
4545-95MM				95			D+5.4	8.76	
4545-100MM				100	28		±0.026	D+6.4	8.2
4545-105MM				105		D+6.4		7.44	
4545-110MM				110		D+6.4		6.72	
4545-115MM				115	32	±0.031	D+7.4	6.1	
4545-120MM				120			D+7.4	5.23	



Cast iron:GG20

Screw Specification:3/4-10BSW×2

Transmissible torque: 12400Nm

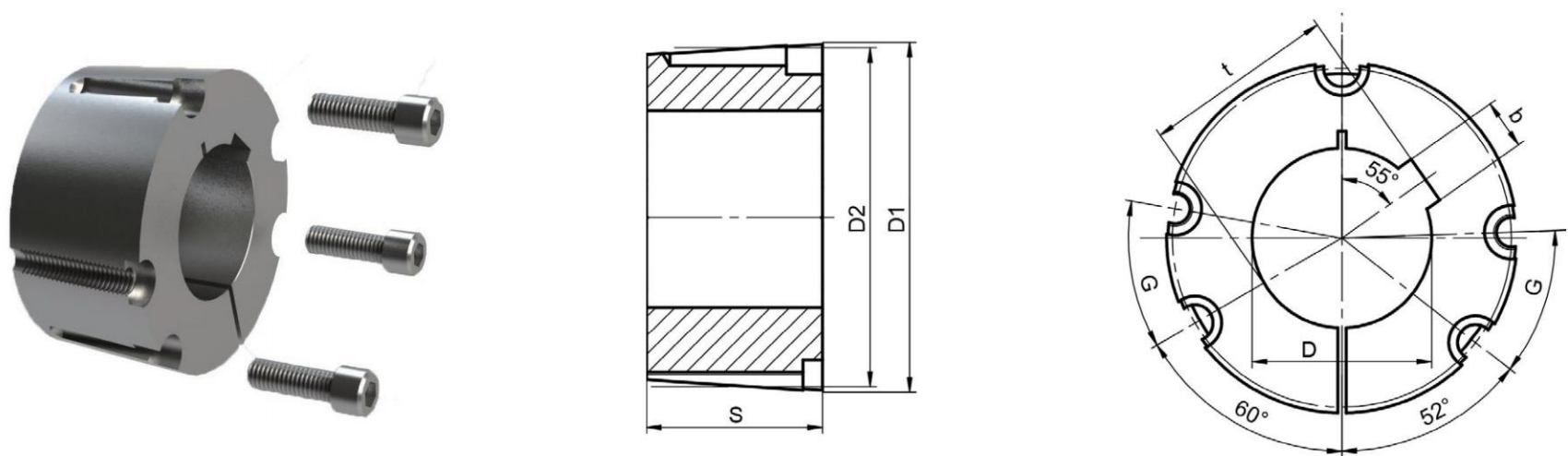
Bore In Inches

Tools for tighten: Allen wrench 9/16"

Screws Quantity: 3

Screw tightening torque:192Nm

Product Model	D1	D2	S	D (G7)	b	t	Weight (Kg)
4545-2	6.367"	6.13"	4.5"	2"	1/2"	D+5/32"	13.4
4545-2-1/8				2-1/8"	5/8"	D+7/32"	13.1
4545-2-3/16				2-3/16"			12.75
4545-2-1/4				2-1/4"			12.42
4545-2-5/16				2-5/16"			12.85
4545-2-7/16				2-7/16"			11.96
4545-2-1/2				2-1/2"			11.8
4545-2-11/16				2-11/16"	3/4"	D+1/4"	12.01
4545-2-3/4				2-3/4"			12.01
4545-2-5/8				2-5/8"			11.6
4545-2-7/8				2-7/8"			11.5
4545-2-15/16				2-15/16"			11.42
4545-3				3"			10.74
4545-3-3/16				3-3/16"	7/8"	D+5/16"	10.44
4545-3-1/4				3-1/4"			10.1
4545-3-3/8				3-3/8"			9.7
4545-3-7/16				3-7/16"			9.6
4545-3-1/2				3-1/2"			9.48
4545-3-5/8				3-5/8"	1"	D+3/8"	9.47
4545-3-3/4				3-3/4"			8.66
4545-3-7/8				3-7/8"			8.31
4545-3-15/16				3-15/16"			7.9
4545-4				4"			7.88
4545-4-1/8				4-1/8"	1 1/4"	D+7/16"	7.76
4545-4-1/4				4-1/4"			6.9
4545-4-3/8				4-3/8"			6.64
4545-4-7/16				4-7/16"			6.2
4545-4-1/2				4-1/2"			5.98



Cast iron:GG20

Screw Specification:7/8-9BSW×2-1/4

Transmissible torque: 14200Nm

Tools for tighten: Allen wrench 3/4"

Screws Quantity: 3

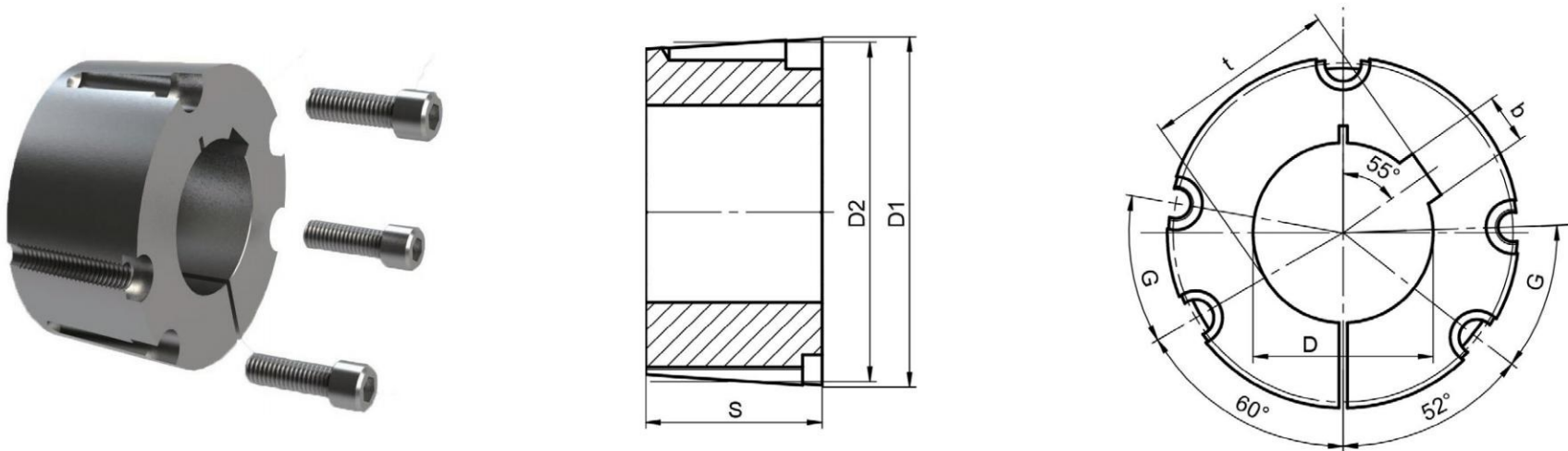
Screw tightening torque:271Nm

Bore In Metric

Product Model	D1	D2	S	D (G7)	b	Js9	t	Weight (Kg)
5040-50MM	177.6	170.69	101.6	50	14	±0.021	D+3.8	14.9
5040-55MM				55	16		D+4.3	14.7
5040-60MM				60	18		D+4.4	14.55
5040-65MM				65			D+4.4	14.3
5040-70MM				70	20	±0.026	D+4.9	12.85
5040-75MM				75			D+4.9	12.42
5040-80MM				80	22		D+5.4	11.9
5040-85MM				85			D+5.4	11.55
5040-90MM				90	25	±0.026	D+5.4	11.06
5040-95MM				95			D+5.4	10.48
5040-100MM				100	28		D+6.4	9.32
5040-105MM				105			D+6.4	9.28
5040-110MM				110			D+6.4	8.72
5040-115MM				115	32	±0.031	D+7.4	8.72
5040-120MM				120			D+7.4	7.37
5040-125MM				125			D+7.4	6.71
5040-130MM				130			D+7.4	5.94

Bore In Inches

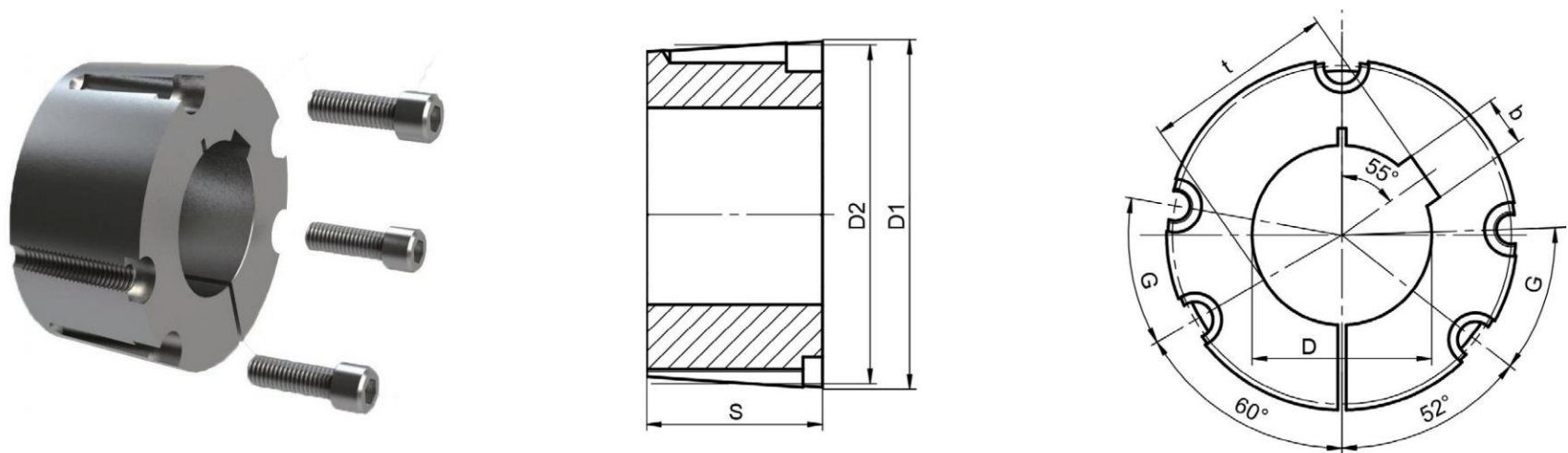
Product Model	D1	D2	S	D (G7)	b	t	Weight (Kg)
5040-2-3/4	6.992"	6.72"	4"	2-3/4"	3/4"	D+1/4"	12.8
5040-3				3"		D+1/4"	12.32
5040-3-1/8				3-1/8"	7/8"	D+5/16"	11.99
5040-3-1/4				3-1/4"		D+5/16"	11.75
5040-3-3/8				3-3/8"		D+5/16"	11.41
5040-3-1/2				3-1/2"		D+5/16"	11.14
5040-3-3/4				3-3/4"	1"	D+3/8"	10.37
5040-4				4"		D+3/8"	9.68
5040-4-1/4				4-1/4"	1 1/4"	D+7/16"	8.87
5040-4-1/2				4-1/2"		D+7/16"	8.03
5040-4-3/4				4-3/4"		D+7/16"	7.19
5040-5				5"		D+7/16"	6.31



Cast iron:GG20
Screw Specification:7/8-9BSW×2-1/4
Transmissible torque: 14200Nm
Bore In Metric

Tools for tighten: Allen wrench 3/4"
Screws Quantity: 3
Screw tightening torque:271Nm

Product Model	D1	D2	S	D (G7)	b	Js9	t	Weight (Kg)
5050-30MM	177.6	170.69	127	30	8	±0.018	D+3.3	18.74
5050-40MM				40	12	±0.021	D+3.3	18.24
5050-48MM				48	14		D+3.8	17.65
5050-50MM				50	16		D+3.8	17.46
5050-55MM				55			D+4.3	17.2
5050-60MM				60	18		D+4.4	17.58
5050-65MM				65			D+4.4	16.2
5050-70MM				70	20	±0.026	D+4.9	15.86
5050-75MM				75	22		D+4.9	15.33
5050-80MM				80			D+5.4	14.72
5050-85MM				85			D+5.4	14.18
5050-88MM				88	25		D+5.4	13.78
5050-90MM				90			D+5.4	13.54
5050-95MM				95			D+5.4	12.92
5050-98MM				98	28		D+6.4	12.54
5050-100MM				100			D+6.4	12.15
5050-102MM				102			D+6.4	11.86
5050-105MM				105			D+6.4	11.42
5050-109MM				109			D+6.4	10.82
5050-110MM				110			D+6.4	10.66
5050-115MM				115	32	±0.031	D+7.4	9.81
5050-120MM				120			D+7.4	8.98
5050-125MM				125			D+7.4	8.95
5050-127MM				127			D+7.4	7.75
5050-130MM				130			D+7.4	7.21



Cast iron:GG20

Screw Specification:7/8-9BSW×2-1/4

Transmissible torque: 14200Nm

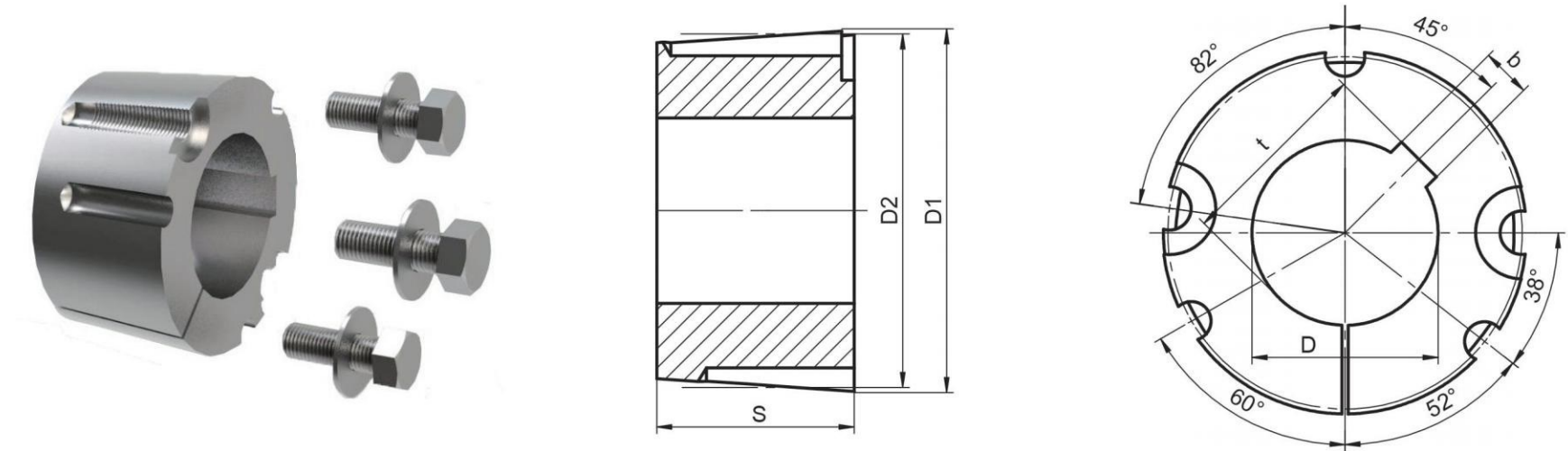
Bore In Inches

Tools for tighten: Allen wrench 3/4"

Screws Quantity: 3

Screw tightening torque:271Nm

Product Model	D1	D2	S	D (G7)	b	t	Weight (Kg)
5050-2-7/16	6.992"	6.72"	5"	2-7/16"	5/8"	D+7/32"	16.34
5050-2-3/4				2-3/4"	3/4"	D+1/4"	15.7
5050-2-7/8				2-7/8"		D+1/4"	15.45
5050-2-15/16				2-15/16"		D+1/4"	15.35
5050-3				3"		D+1/4"	15.08
5050-3-1/8				3-1/8"	7/8"	D+5/16"	14.73
5050-3-3/16				3-3/16"		D+5/16"	14.6
5050-3-1/4				3-1/4"		D+5/16"	14.34
5050-3-3/8				3-3/8"		D+5/16"	14.06
5050-3-1/2				3-1/2"		D+5/16"	13.39
5050-3-5/8				3-5/8"	1"	D+3/8"	13.26
5050-3-3/4				3-3/4"		D+3/8"	12.77
5050-3-7/8				3-7/8"		D+3/8"	12.32
5050-3-15/16				3-15/16"		D+3/8"	12.01
5050-4				4"		D+3/8"	11.9
5050-4-1/4				4-1/4"	1 1/4"	D+7/16"	11.84
5050-4-3/8				4-3/8"		D+7/16"	10.84
5050-4-7/16				4-7/16"		D+7/16"	10.8
5050-4-1/2				4-1/2"		D+7/16"	9.88
5050-4-5/8				4-5/8"		D+7/16"	9.3
5050-4-3/4				4-3/4"		D+7/16"	8.8
5050-5				5"		D+7/16"	7.64



Cast iron:GG20

Screw Specification:1-1/4-7BSW×3-1/2

Transmissible torque: 31870Nm

Screws Quantity: 3

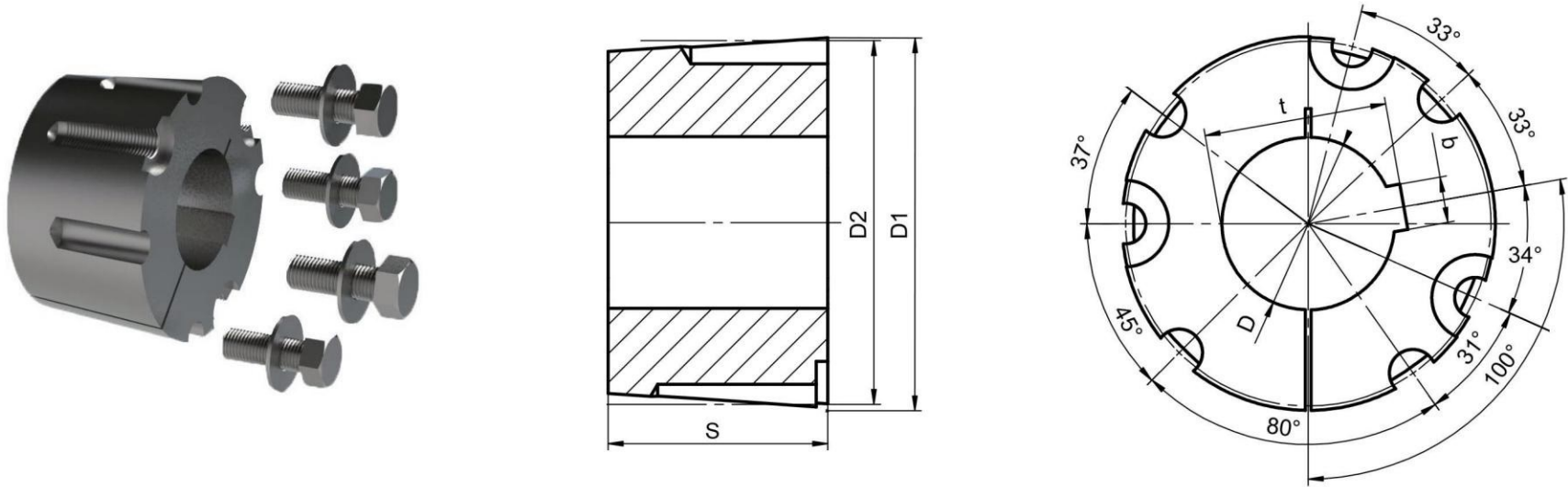
Screw tightening torque:880Nm

Bore In Metric

Product Model	D1	D2	S	D (G7)	b	Js9	t	Weight (Kg)
6050-95MM	235	228.5	127	95	25	±0.026	D+5.4	28.3
6050-140MM				140	36	±0.031	D+8.4	20.65

Bore In Inches

Product Model	D1	D2	S	D (G7)	b	t	Weight (Kg)
6050-4	9.252"	8.996"	5"	4"	1"	D+3/8"	30.1
6050-4-7/8				4-7/8	1 1/4"	D+7/16"	26.4
6050-5				5"		D+7/16"	23
6050-5-1/2				5-1/2"	1 1/2"	D+1/2"	22.6
6050-6				6"		D+1/2"	18



Cast iron:GG20

Screw Specification:1-1/4-7BSW×3-1/2

Transmissible torque: 47015Nm

Screws Quantity: 4

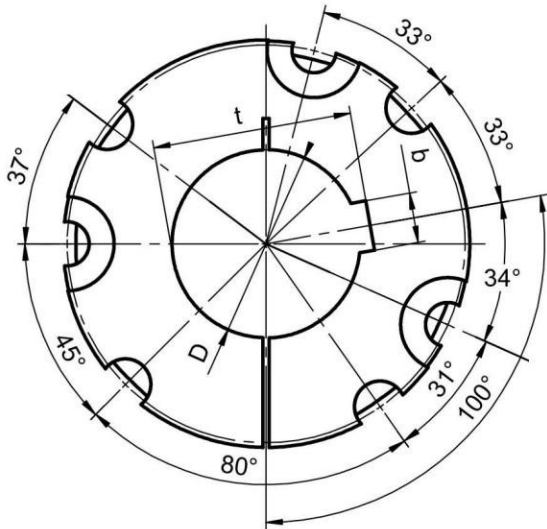
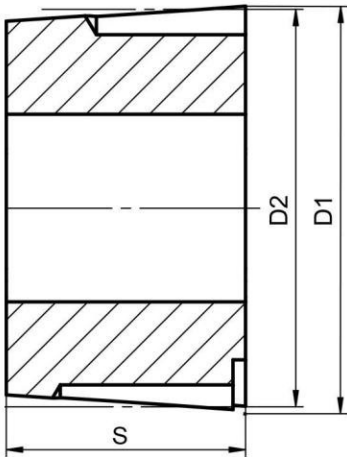
Screw tightening torque:880Nm

Bore In Metric

Product Model	D1	D2	S	D (G7)	b	Js9	t	Weight (Kg)
7060-100MM	260.4	254	152.4	100	28	±0.026	D+6.4	45.82
7060-110MM				110	28		D+6.4	44.2
7060-120MM				120	32		D+7.4	42.51
7060-127MM				127	32	±0.031	D+7.4	40.57
7060-130MM				130	32		D+7.4	38.8
7060-140MM				140	36		D+8.4	38
7060-165MM				165	40		D+9.4	31.1
7060-175MM				175	45		D+10.4	27.26
7060-180MM				180	45		D+10.4	26.68

Bore In Inches

Product Model	D1	D2	S	D (G7)	b	t	Weight (Kg)
7060-4-15/16	10.252"	10"	6"	4-15/16"	1 1/4"	D+7/16"	36.91
7060-7				7"	1 3/4"	D+5/8"	23.21



Cast iron:GG20

Screw Specification:1-1/4-7BSW×3-1/2

Transmissible torque: 51535Nm

Screws Quantity: 4

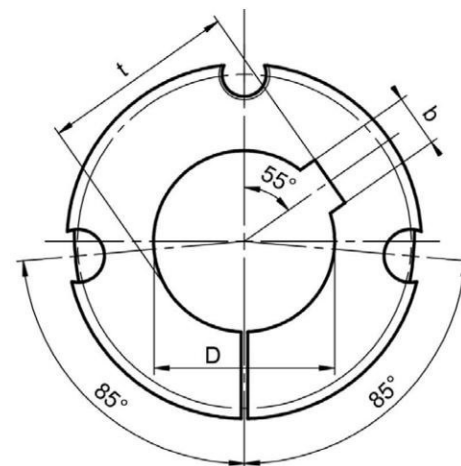
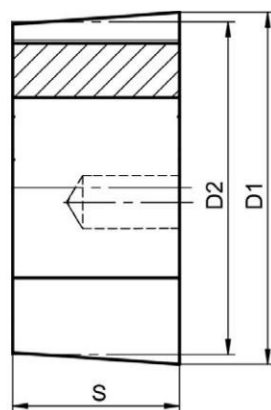
Screw tightening torque:880Nm

Bore In Metric

Product Model	D1	D2	S	D (G7)	b	Js9	t	Weight (Kg)
8065-125MM	285.8	279.4	165.1	125	32	±0.031	D+7.4	52.8
8065-150MM				150	36		D+8.4	49.82
8065-180MM				180	45		D+10.4	37.04
8065-200MM				200			D+10.4	31

Bore In Inches

Product Model	D1	D2	S	D (G7)	b	t	Weight (Kg)
8065-7-1/2	11.252"	11"	6.5"	4-15/16"	1 1/4"	D+7/16"	36.91



Cast iron:GG20

Screw Specification:1/4-20BSW×1/2

Transmissible torque: 136Nm

Tools for tighten: Allen wrench 1/8"

Screws Quantity: 2

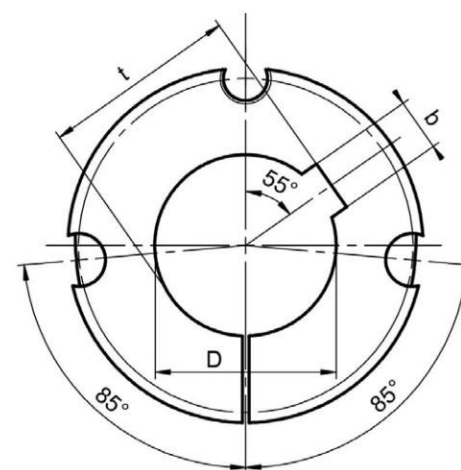
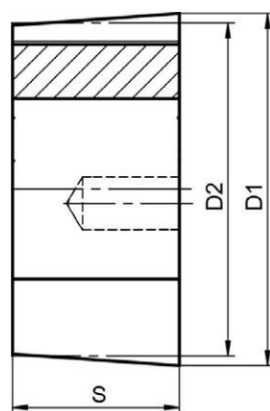
Screw tightening torque:5.6Nm

Bore In Metric

Product Model	D1	D2	S	D (G7)	b	Js9	t	Weight (Kg)
1008-8MM	35.2	33.73	22.3	8	2	±0.0125	D+1	0.13
1008-9MM				9	3		D+1.4	0.12
1008-10MM				10	3		D+1.4	0.11
1008-11MM				11	4	±0.015	D+1.8	0.11
1008-12MM				12	4		D+1.8	0.11
1008-14MM				14	5		D+2.3	0.11
1008-15MM				15	5		D+2.3	0.11
1008-16MM				16	5		D+2.3	0.1
1008-17MM				17	5		D+2.3	0.1
1008-18MM				18	6		D+2.8	0.09
1008-19MM				19	6		D+2.8	0.09
1008-20MM				20	6		D+2.8	0.07
1008-22MM				22	6		D+2.8	0.07
1008-24MM				24	8	±0.018	D+1.3	0.06
1008-25MM				25	8		D+1.3	0.06

Bore In Inches

Product Model	D1	D2	S	D (G7)	b	t	Weight (Kg)
1008-3/8	1.386"	1.328"	0.878"	3/8"	1/8"	D+1/16"	0.11
1008-7/16				7/16"		D+1/16"	0.11
1008-1/2				1/2"		D+1/16"	0.11
1008-9/16				9/16"	3/16"	D+3/32"	0.11
1008-5/8				5/8"		D+3/32"	0.1
1008-11/16				11/16"		D+3/32"	0.1
1008-3/4				3/4"		D+3/32"	0.1
1008-13/16				13/16"	1/4"	D+1/8"	0.08
1008-7/8				7/8"		D+1/8"	0.07
1008-15/16				15/16"		D+1/8"	0.07
1008-1				1"		D+1/16"	0.06



Cast iron:GG20

Screw Specification:1/4-20BSW×1/2

Transmissible torque: 147Nm

Bore In Metric

Tools for tighten: Allen wrench 1/8"

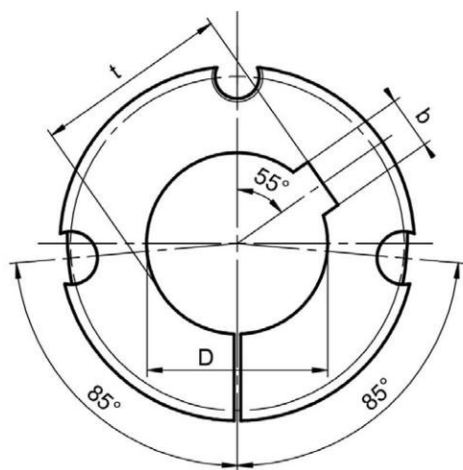
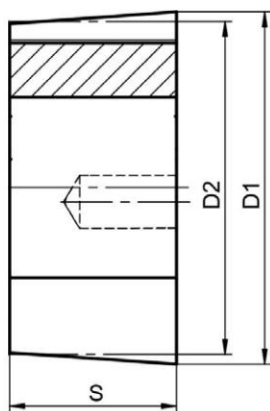
Screws Quantity: 2

Screw tightening torque:5.6Nm

Product Model	D1	D2	S	D (G7)	b	Js9	t	Weight (Kg)	
1108-9MM	38.32	36.92	22.3	9	3	±0.0125	D+1.4	0.15	
1108-10MM				10			D+1.4	0.15	
1108-11MM				11	4	±0.015	D+1.8	0.14	
1108-12MM				12			D+1.8	0.14	
1108-14MM				14	5		D+2.3	0.14	
1108-15MM				15			D+2.3	0.13	
1108-16MM				16			D+2.3	0.12	
1108-17MM				17			D+2.3	0.12	
1108-18MM				18	6		±0.018	D+2.8	0.12
1108-19MM				19				D+2.8	0.11
1108-20MM				20				D+2.8	0.11
1108-21MM				21		D+2.8		0.11	
1108-22MM				22		D+2.8		0.11	
1108-24MM				24	8	D+3.3		0.09	
1108-25MM				25		D+3.3		0.08	
1108-26MM				26		D+3.3		0.08	
1108-28MM				28		D+1.3		0.06	

Bore In Inches

Product Model	D1	D2	S	D (G7)	b	t	Weight (Kg)
1108-3/8	1.5086"	1.4535"	0.878"	3/8"	1/8"	D+1/16"	0.15
1108-7/16				7/16"		D+1/16"	0.15
1108-1/2				1/2"		D+1/16"	0.15
1108-9/16				9/16"	3/16"	D+3/32"	0.14
1108-5/8				5/8"		D+3/32"	0.13
1108-11/16				11/16"		D+3/32"	0.13
1108-3/4				3/4"		D+3/32"	0.12
1108-13/16				13/16"	1/4"	D+1/8"	0.11
1108-7/8				7/8"		D+1/8"	0.1
1108-15/16				15/16"		D+1/8"	0.09
1108-1				1"		D+1/8"	0.08
1108-1-1/16				1-1/16"	5/16"	D+1/8"	0.7



Cast iron:GG20

Screw Specification:3/8-16BSW×5/8

Transmissible torque: 407Nm

Tools for tighten: Allen wrench 3/16"

Screws Quantity: 2

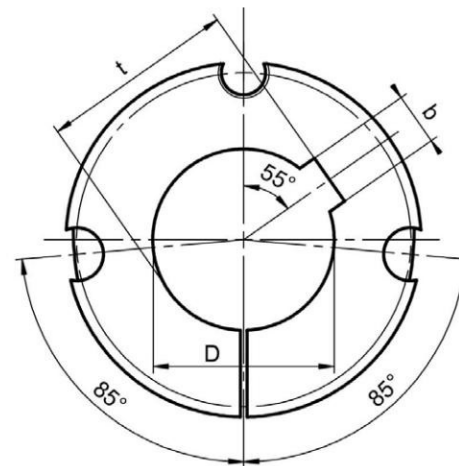
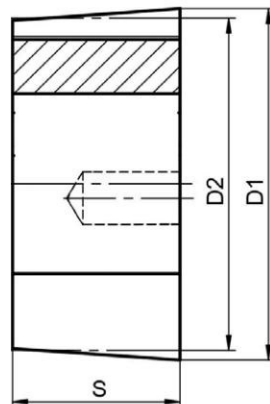
Screw tightening torque:19.6Nm

Bore In Metric

Product Model	D1	D2	S	D (G7)	b	Js9	t	Weight (Kg)
1210-9MM	47.55	44.44	25.4	9	3	±0.0125	D+1.4	0.27
1210-10MM				10	3		D+1.4	0.27
1210-11MM				11	4	±0.015	D+1.8	0.27
1210-12MM				12	4		D+1.8	0.26
1210-13MM				13	5		D+2.3	0.25
1210-14MM				14			D+2.3	0.26
1210-15MM				15			D+2.3	0.25
1210-16MM				16			D+2.3	0.24
1210-17MM				17			D+2.3	0.24
1210-18MM				18	6	±0.018	D+2.8	0.23
1210-19MM				19			D+2.8	0.23
1210-20MM				20			D+2.8	0.22
1210-22MM				22			D+2.8	0.2
1210-23MM				23	8		D+3.3	0.2
1210-24MM				24			D+3.3	0.2
1210-25MM				25			D+3.3	0.18
1210-26MM				26			D+3.3	0.18
1210-28MM				28			D+3.3	0.16
1210-30MM				30			D+3.3	0.15
1210-32MM				32	10		D+3.3	0.14

Bore In Inches

Product Model	D1	D2	S	D (G7)	b	t	Weight (Kg)
1210-1/2	1.872"	1.75"	1"	1/2"	1/8"	D+1/16"	0.25
1210-9/16				9/16"	3/16"	D+3/32"	0.24
1210-5/8				5/8"		D+3/32"	0.24
1210-11/16				11/16"		D+3/32"	0.24
1210-3/4				3/4"		D+3/32"	0.23
1210-13/16				13/16"	1/4"	D+1/8"	0.22
1210-7/8				7/8"		D+1/8"	0.22
1210-15/16				15/16"		D+1/8"	0.19
1210-1				1"		D+1/8"	0.19
1210-1-1/16				1-1/16"	5/16"	D+1/8"	0.16
1210-1-1/8				1-1/8"		D+1/8"	0.16
1210-1-3/16				1-3/16"		D+1/8"	0.16
1210-1-1/4				1-1/4"		D+1/8"	0.13



Cast iron:GG20

Screw Specification:3/8-16BSW×5/8

Transmissible torque: 407Nm

Tools for tighten: Allen wrench 3/16"

Screws Quantity: 2

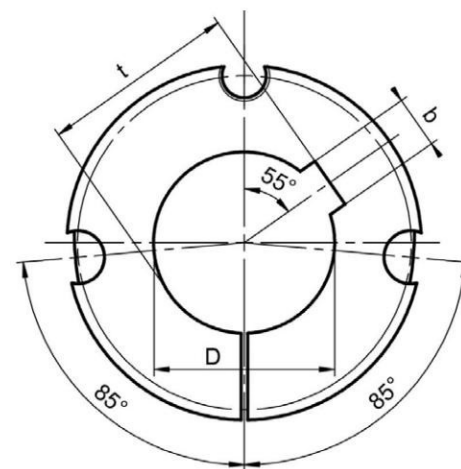
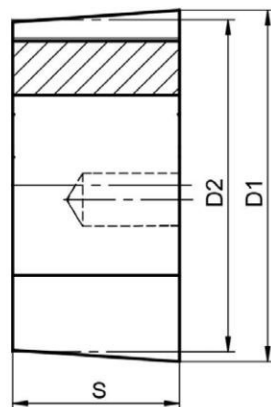
Screw tightening torque:19.6Nm

Bore In Metric

Product Model	D1	D2	S	D (G7)	b	Js9	t	Weight (Kg)
1215-11MM	47.55	44.44	38.1	11	4	±0.015	D+1.8	0.38
1215-12MM				12			D+1.8	0.36
1215-14MM				14 15 16 17	5		D+2.3	0.36
1215-15MM							D+2.3	0.35
1215-16MM							D+2.3	0.35
1215-17MM							D+2.3	0.34
1215-18MM				18 19 20 22	6		D+2.8	0.33
1215-19MM							D+2.8	0.33
1215-20MM							D+2.8	0.29
1215-22MM							D+2.8	0.3
1215-24MM				24 25 28 30	8	±0.018	D+3.3	0.29
1215-25MM							D+3.3	0.28
1215-28MM							D+3.3	0.24
1215-30MM							D+3.3	0.22
1215-32MM				32	10		D+3.3	0.2

Bore In Inches

Product Model	D1	D2	S	D (G7)	b	t	Weight (Kg)
1215-1/2	1.872"	1.75"	1.5"	1/2"	1/8"	D+1/16"	0.36
1215-5/8				5/8"	3/16"	D+3/32"	0.36
1215-11/16				11/16"		D+3/32"	0.34
1215-3/4				3/4"		D+3/32"	0.34
1215-13/16				13/16"	1/4"	D+1/8"	0.34
1215-7/8				7/8"		D+1/8"	0.33
1215-15/16				15/16"		D+1/8"	0.33
1215-1				1"		D+1/8"	0.29
1215-1-1/16				1-1/16"	5/16"	D+1/8"	0.25
1215-1-1/8				1-1/8"		D+1/8"	0.22
1215-1-3/16				1-3/16"		D+1/8"	0.22
1215-1-1/4				1-1/4"		D+1/8"	0.2



Cast iron:GG20

Screw Specification:3/8-16BSW×5/8

Transmissible torque: 435Nm

Tools for tighten: Allen wrench 3/16"

Screws Quantity: 2

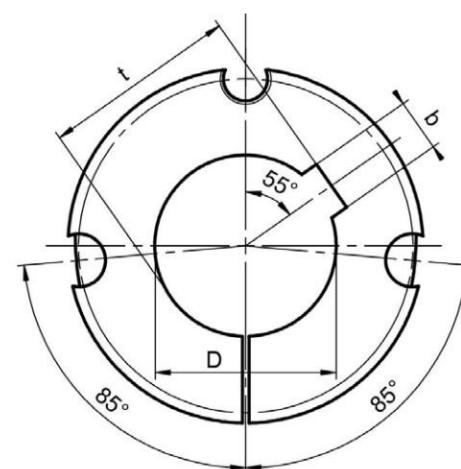
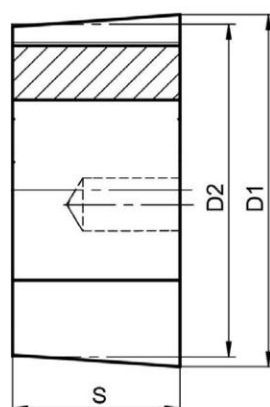
Screw tightening torque:19.6Nm

Bore In Metric

Product Model	D1	D2	S	D (G7)	b	Js9	t	Weight (Kg)
1310-12MM	50.8	47.63	25.4	12	4	±0.015	D+1.8	0.31
1310-14MM				14	5		D+2.3	0.3
1310-16MM				16			D+2.3	0.29
1310-18MM				18	6		D+2.8	0.28
1310-19MM				19		D+2.8	0.23	
1310-20MM				20		D+2.8	0.28	
1310-22MM				22		D+2.8	0.25	
1310-24MM				24	8	±0.018	D+3.3	0.24
1310-25MM				25			D+3.3	0.23
1310-28MM				28			D+3.3	0.22
1310-30MM				30			D+3.3	0.19
1310-32MM	32	10	D+3.3	0.18				
1310-35MM	35		D+3.3	0.14				

Bore In Inches

Product Model	D1	D2	S	D (G7)	b	t	Weight (Kg)
1310-7/8	2"	1.875"	1"	7/8"	1/4"	D+1/8"	0.25
1310-1				1"		D+1/8"	0.23
1310-1-1/4				1-1/4"	5/16"	D+1/8"	0.2
1310-1-3/8				1-3/8"	3/8"	D+1/8"	0.2



Cast iron:GG20

Screw Specification:3/8-16BSW×5/8

Transmissible torque: 486Nm

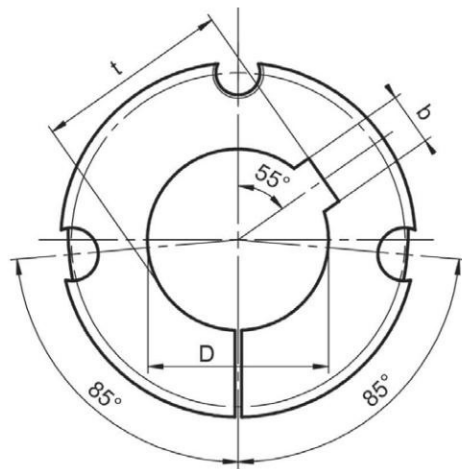
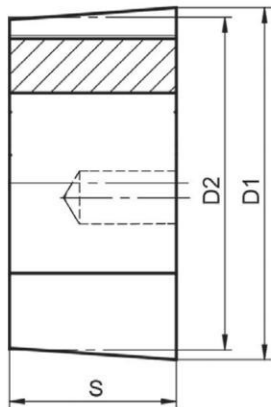
Bore In Metric

Tools for tighten: Allen wrench 3/16"

Screws Quantity: 2

Screw tightening torque:19.6Nm

Product Model	D1	D2	S	D (G7)	b	Js9	t	Weight (Kg)	
1610-10MM	57.07	53.97	25.4	10	3	±0.0125	D+1.4	0.42	
1610-11MM				11	4	±0.015	D+1.8	0.42	
1610-12MM				12			D+1.8	0.39	
1610-14MM				14	5		D+2.3	0.39	
1610-15MM				15			D+2.3	0.39	
1610-16MM				16			D+2.3	0.38	
1610-17MM				17			D+2.3	0.38	
1610-18MM				18	6		D+2.8	0.38	
1610-19MM				19			D+2.8	0.38	
1610-20MM				20			D+2.8	0.36	
1610-22MM				22			D+2.8	0.36	
1610-23MM				23	8	±0.018	D+3.3	0.34	
1610-24MM				24			D+3.3	0.33	
1610-25MM				25			D+3.3	0.33	
1610-26MM				26			D+3.3	0.32	
1610-28MM				28			D+3.3	0.32	
1610-29MM				29			D+3.3	0.28	
1610-30MM				30			D+3.3	0.28	
1610-32MM				32	10	±0.021	D+3.3	0.27	
1610-33MM				33			D+3.3	0.27	
1610-34MM				34			D+3.3	0.26	
1610-35MM				35			D+3.3	0.24	
1610-36MM				36			D+3.3	0.24	
1610-38MM				38			D+3.3	0.21	
1610-39MM				39	12		±0.021	D+3.3	0.19
1610-40MM				40				D+3.3	0.18
1610-42MM				42				D+3.3	0.16



Cast iron:GG20

Screw Specification:3/8-16BSW×5/8

Transmissible torque: 486Nm

Tools for tighten: Allen wrench 3/16"

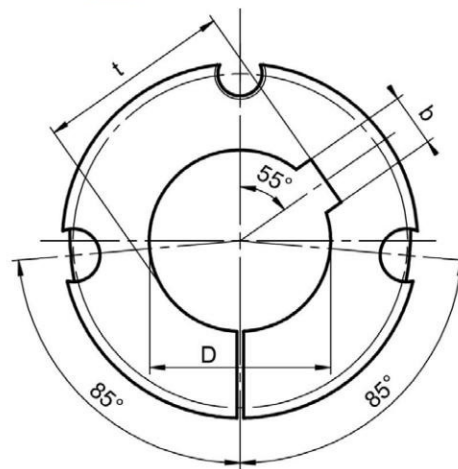
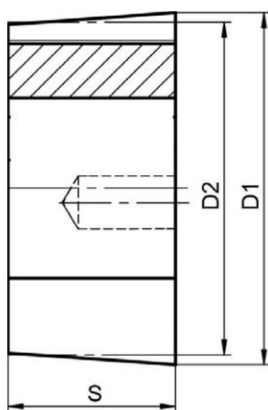
Screws Quantity: 2

Screw tightening torque:19.6Nm

Bore In Inches

Product Model	D1	D2	S	D (G7)	b	t	Weight (Kg)
1610-1/2	2.247"	2.125"	1"	1/2"	1/8"	D+1/16"	0.39
1610-9/16				9/16"	3/16"	D+3/32"	0.39
1610-5/8				5/8"		D+3/32"	0.38
1610-11/16				11/16"		D+3/32"	0.38
1610-3/4				3/4"		D+3/32"	0.36
1610-13/16				13/16"	1/4"	D+1/8"	0.36
1610-7/8				7/8"		D+1/8"	0.34
1610-15/16				15/16"		D+1/8"	0.34
1610-1				1"		D+1/8"	0.32
1610-1-1/16				1-1/16"	5/16"	D+1/8"	0.31
1610-1-1/8				1-1/8"		D+1/8"	0.3
1610-1-3/16				1-3/16"		D+1/8"	0.28
1610-1-1/4				1-1/4"		D+1/8"	0.27
1610-1-5/16				1-5/16"	3/8"	D+1/8"	0.24
1610-1-3/8				1-3/8"		D+1/8"	0.24
1610-1-7/16				1-7/16"		D+1/8"	0.23
1610-1-1/2				1-1/2"		D+1/8"	0.21
1610-1-5/8				1-5/8"	7/16"	D+1/8"	0.16

1615



Cast iron:GG20

Screw Specification:3/8-16BSW×5/8

Transmissible torque: 486Nm

Tools for tighten: Allen wrench 3/16"

Screws Quantity: 2

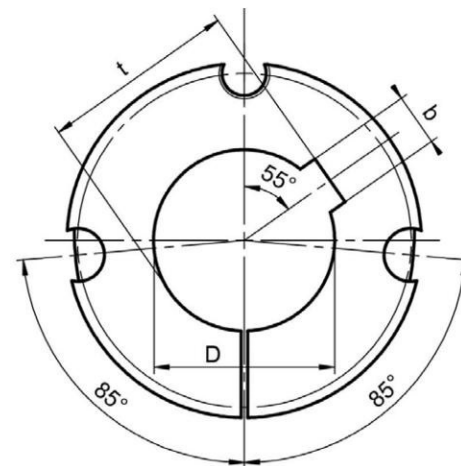
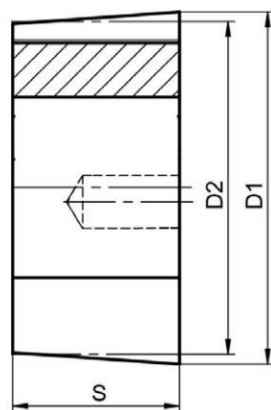
Screw tightening torque:19.6Nm

Bore In Metric

Product Model	D1	D2	S	D (G7)	b	Js9	t	Weight (Kg)
1615-12MM	57.07	53.97	38.1	12	4	±0.015	D+1.8	0.58
1615-14MM				14	5		D+2.3	0.57
1615-15MM				15			D+2.3	0.56
1615-16MM				16			D+2.3	0.55
1615-18MM				18	6	±0.015	D+2.8	0.54
1615-19MM				19			D+2.8	0.54
1615-20MM				20			D+2.8	0.53
1615-22MM				22			D+2.8	0.51
1615-24MM				24	8	±0.018	D+3.3	0.4
1615-25MM				25			D+3.3	0.47
1615-26MM				26			D+3.3	0.46
1615-27MM				27			D+3.3	0.46
1615-28MM				28			D+3.3	0.42
1615-30MM				30			D+3.3	0.4
1615-32MM				32	10	±0.018	D+3.3	0.39
1615-35MM				35			D+3.3	0.34
1615-38MM				38			D+3.3	0.3
1615-40MM				40	12	±0.021	D+3.3	0.26
1615-42MM				42			D+2.2	0.25

Bore In Inches

Product Model	D1	D2	S	D (G7)	b	t	Weight (Kg)
1615-3/8	2.247"	2.125"	1.5"	3/8"	1/8"	D+1/16"	0.60
1615-1/2				1/2"		D+1/16"	0.60
1615-5/8				5/8"	3/16"	D+3/32"	0.60
1615-3/4				3/4"		D+3/32"	0.53
1615-7/8				7/8"	1/4"	D+1/8"	0.50
1615-1				1"		D+1/8"	0.47
1615-1-1/8				1-1/8"	5/16"	D+1/8"	0.42
1615-1-3/16				1-3/16"		D+1/8"	0.40
1615-1-1/4				1-1/4"		D+1/8"	0.40
1615-1-3/8				1-3/8"	3/8"	D+1/8"	0.35
1615-1-7/16				1-7/16"		D+1/8"	0.32
1615-1-1/2				1-1/2"		D+1/8"	0.30
1615-1-5/8				1-5/8"	7/16"	D+1/8"	0.24



Cast iron:GG20

Screw Specification:7/16-14BSW×7/8

Transmissible torque: 808Nm

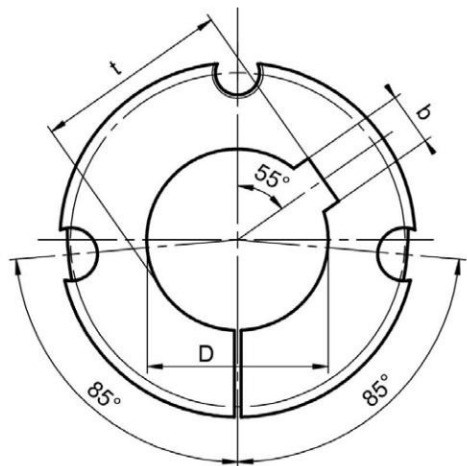
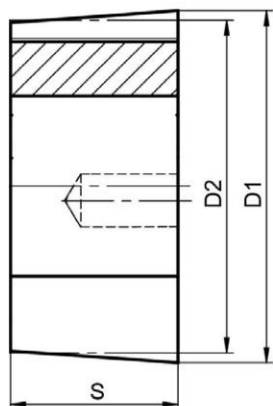
Bore In Metric

Tools for tighten: Allen wrench 7/32"

Screws Quantity: 2

Screw tightening torque:30.4Nm

Product Model	D1	D2	S	D (G7)	b	Js9	t	Weight (Kg)	
2012-11MM	69.77	66.68	31.8	11	4	±0.015	D+1.8	0.76	
2012-12MM				12	4		D+1.8	0.76	
2012-14MM				14	5		D+2.3	0.75	
2012-15MM				15			D+2.3	0.72	
2012-16MM				16			D+2.3	0.72	
2012-17MM				17			D+2.3	0.72	
2012-18MM				18	6	±0.015	D+2.8	0.72	
2012-19MM				19			D+2.8	0.72	
2012-20MM				20			D+2.8	0.72	
2012-22MM				22			D+2.8	0.69	
2012-23MM				23	8	±0.018	D+3.3	0.69	
2012-24MM				24			D+3.3	0.68	
2012-25MM				25			D+3.3	0.66	
2012-26MM				26			D+3.3	0.66	
2012-28MM				28			D+3.3	0.64	
2012-30MM				30			D+3.3	0.61	
2012-32MM				32	10		±0.018	D+3.3	0.6
2012-33MM				33				D+3.3	0.59
2012-34MM				34				D+3.3	0.59
2012-35MM				35				D+3.3	0.57
2012-36MM				36				D+3.3	0.55
2012-37MM				37				D+3.3	0.55
2012-38MM				38				D+3.3	0.52
2012-40MM				40	12		D+3.3	0.5	
2012-42MM				42			D+3.3	0.46	
2012-45MM				45	14	±0.021	D+3.8	0.42	
2012-47MM				47			D+3.8	0.38	
2012-48MM				48			D+3.8	0.36	
2012-49MM				49			D+3.8	0.34	
2012-50MM				50			D+3.8	0.33	



Cast iron:GG20

Screw Specification:7/16-14BSW×7/8

Transmissible torque: 808Nm

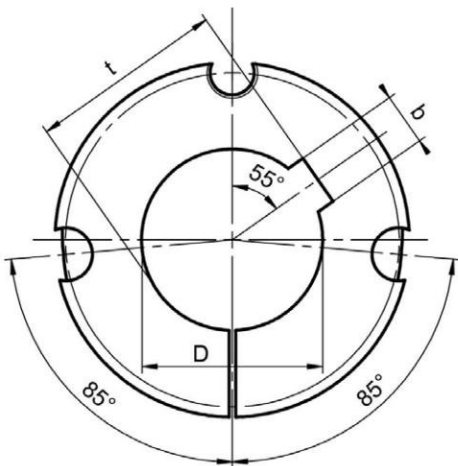
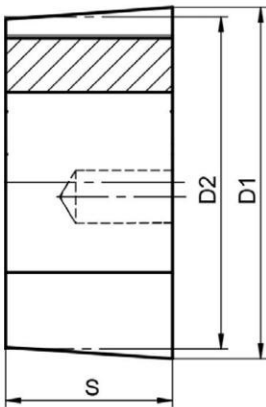
Tools for tighten: Allen wrench 7/32"

Screws Quantity: 2

Screw tightening torque:30.4Nm

Bore In Inches

Product Model	D1	D2	S	D (G7)	b	t	Weight (Kg)
2012-1/2	2.747"	2.625"	1.25"	1/2"	1/8"	D+1/16"	0.75
2012-9/16				9/16"	3/16"	D+3/32"	0.76
2012-5/8				5/8"		D+3/32"	0.74
2012-11/16				11/16"		D+3/32"	0.73
2012-3/4				3/4"		D+3/32"	0.7
2012-13/16				13/16"	1/4"	D+1/8"	0.71
2012-7/8				7/8"		D+1/8"	0.7
2012-15/16				15/16"		D+1/8"	0.68
2012-1				1"		D+1/8"	0.66
2012-1-1/16				1-1/16"	5/16"	D+1/8"	0.65
2012-1-1/8				1-1/8"		D+1/8"	0.64
2012-1-3/16				1-3/16"		D+1/8"	0.63
2012-1-1/4				1-1/4"		D+1/8"	0.6
2012-1-5/16				1-5/16"	3/8"	D+1/8"	0.59
2012-1-3/8				1-3/8"		D+1/8"	0.57
2012-1-7/16				1-7/16"		D+1/8"	0.54
2012-1-1/2				1-1/2"		D+1/8"	0.52
2012-1-5/8				1-5/8"	7/16"	D+5/32"	0.48
2012-1-11/16				1-11/16"		D+5/32"	0.48
2012-1-3/4				1-3/4"		D+5/32"	0.43
2012-1-7/8				1-7/8"	1/2"	D+5/32"	0.38
2012-1-15/16				1-15/16"		D+5/32"	0.34
2012-2				2"		D+5/32"	0.32



Cast iron:GG20

Screw Specification:7/16-14BSW×7/8

Transmissible torque: 808Nm

Tools for tighten: Allen wrench 3/32"

Screws Quantity: 2

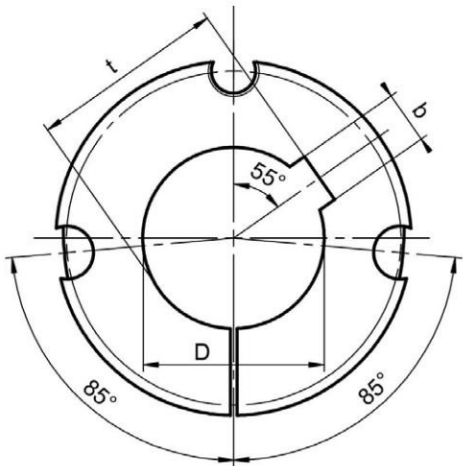
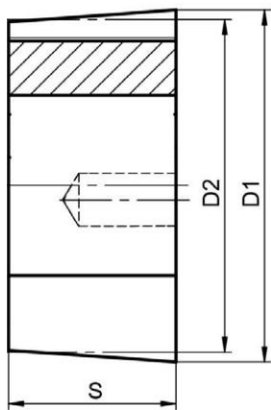
Screw tightening torque:30.4Nm

Bore In Metric

Product Model	D1	D2	S	D (G7)	b	Js9	t	Weight (Kg)
2017-14MM	69.77	66.68	44.5	14	5	±0.015	D+2.3	1.2
2017-18MM				18	6		D+2.8	1.2
2017-19MM				19			D+2.8	1.18
2017-20MM				20			D+2.8	1.1
2017-22MM				22			D+2.8	1
2017-24MM				24	8	±0.018	D+3.3	0.98
2017-25MM				25			D+3.3	0.91
2017-28MM				28			D+3.3	0.88
2017-30MM				30			D+3.3	0.82
2017-32MM				32	10		D+3.3	0.75
2017-35MM				35			D+3.3	0.73
2017-38MM				38			D+3.3	0.7
2017-40MM				40	12	±0.021	D+3.3	0.68
2017-42MM				42			D+3.3	0.62
2017-45MM				45	14		D+3.8	0.57
2017-48MM				48			D+3.8	0.5
2017-50MM				50			D+3.8	0.47

Bore In Inches

Product Model	D1	D2	S	D (G7)	b	t	Weight (Kg)
2017-1	2.747"	2.625"	1.75"	1"	1/4"	D+1/8"	0.9
2017-1-1/8				1-1/8"	5/16"	D+1/8"	0.87
2017-1-1/4				1-1/4"		D+1/8"	0.82
2017-1-3/8				1-3/8"	3/8"	D+1/8"	0.76
2017-1-1/2				1-1/2"		D+1/8"	0.7
2017-1-3/4				1-3/4"	7/16"	D+5/32"	0.58
2017-1-7/8				1-7/8"	1/2"	D+5/32"	0.54
2017-2				2"		D+5/32"	0.42



Cast iron:GG20

Screw Specification:1/2-12BSW×1

Transmissible torque: 1310Nm

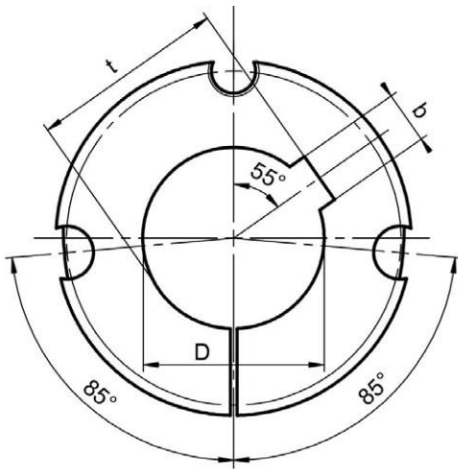
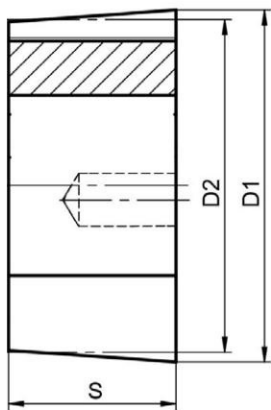
Bore In Metric

Tools for tighten: Allen wrench 1/4"

Screws Quantity: 2

Screw tightening torque:48Nm

Product Model	D1	D2	S	D (G7)	b	Js9	t	Weight (Kg)	
2517-10MM	85.65	82.55	44.5	10	3	±0.0125	D+1.4	1.63	
2517-11MM				11	4	±0.015	D+1.8	1.63	
2517-12MM				12			D+1.8	1.61	
2517-14MM				14	5		D+2.3	1.6	
2517-15MM				15			D+2.3	1.6	
2517-16MM				16			D+2.3	1.6	
2517-17MM				17			D+2.3	1.58	
2517-18MM				18	6	±0.015	D+2.8	1.58	
2517-19MM				19			D+2.8	1.56	
2517-20MM				20			D+2.8	1.54	
2517-22MM				22			D+2.8	1.52	
2517-24MM				24	8	±0.018	D+3.3	1.5	
2517-25MM				25			D+3.3	1.5	
2517-28MM				28			D+3.3	1.44	
2517-30MM				30			D+3.3	1.43	
2517-32MM				32	10		D+3.3	1.41	
2517-33MM				33			D+3.3	1.38	
2517-34MM				34			D+3.3	1.36	
2517-35MM				35			D+3.3	1.35	
2517-36MM				36			D+3.3	1.32	
2517-38MM				38			D+3.3	1.26	
2517-40MM				40	12	±0.021	D+3.3	1.25	
2517-42MM				42			D+3.3	1.25	
2517-43MM				43			D+3.3	1.25	
2517-45MM				45	14		D+3.8	1.17	
2517-47MM				47			D+3.8	1.09	
2517-48MM				48			D+3.8	1.06	
2517-50MM				50			D+3.8	1	
2517-52MM				52	16		D+4.3	1	
2517-54MM				54			D+4.3	0.94	
2517-55MM				55			D+4.3	0.87	
2517-56MM				56			D+4.3	0.86	
2517-57MM				57			D+4.3	0.86	
2517-58MM				58			D+4.3	0.85	
2517-60MM				60	18		±0.021	D+4.4	0.74
2517-63MM				63				D+4.4	0.64
2517-65MM				65				D+3.3	0.6



Cast iron:GG20

Screw Specification:1/2-12BSW×1

Transmissible torque: 1310Nm

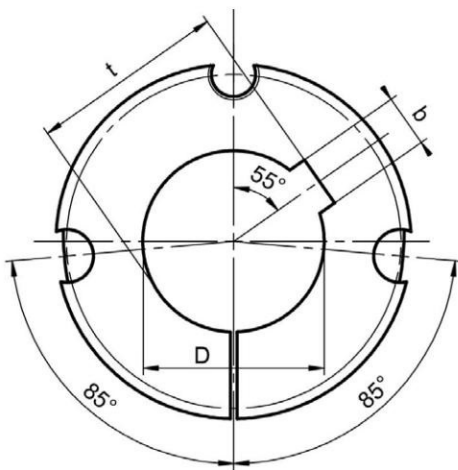
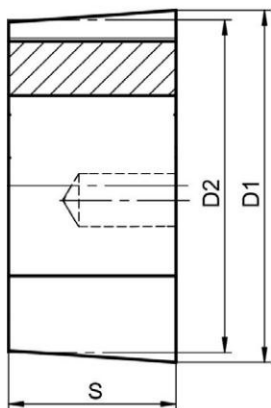
Tools for tighten: Allen wrench 1/4"

Screws Quantity: 2

Screw tightening torque:48Nm

Bore In Metric

Product Model	D1	D2	S	D (G7)	b	t	Weight (Kg)
2517-1/2	3.372"	3.25"	1.75"	1/2"	1/8"	D+1/16"	1.62
2517-5/8				5/8"	3/16"	D+3/32"	1.6
2517-3/4				3/4"		D+3/32"	1.56
2517-13/16				13/16"	1/4"	D+1/8"	1.56
2517-7/8				7/8"		D+1/8"	1.53
2517-15/16				15/16"		D+1/8"	1.51
2517-1				1"		D+1/8"	1.49
2517-1-1/16				1-1/16"	5/16"	D+1/8"	1.47
2517-1-1/8				1-1/8"		D+1/8"	1.45
2517-1-3/16				1-3/16"		D+1/8"	1.43
2517-1-1/4				1-1/4"		D+1/8"	1.41
2517-1-5/16				1-5/16"	3/8"	D+1/8"	1.36
2517-1-3/8				1-3/8"		D+1/8"	1.35
2517-1-7/16				1-7/16"		D+1/8"	1.33
2517-1-1/2				1-1/2"		D+1/8"	1.29
2517-1-5/8				1-5/8"	7/16"	D+5/32"	1.2
2517-1-11/16				1-11/16"		D+5/32"	1.18
2517-1-3/4				1-3/4"		D+5/32"	1.16
2517-1-7/8				1-7/8"	1/2"	D+5/32"	1.08
2517-1-15/16				1-15/16"		D+5/32"	1.03
2517-2				2"		D+5/32"	1
2517-2-1/8				2-1/8"	5/8"	D+7/32"	0.93
2517-2-3/16				2-3/16"		D+7/32"	0.9
2517-2-1/4				2-1/4"		D+7/32"	0.82
2517-2-5/16				2-5/16"		D+7/32"	0.78
2517-2-3/8				2-3/8"		D+7/32"	0.72
2517-2-7/16				2-7/16"		D+7/32"	0.68
2517-2-1/2				2-1/2"		D+7/32"	0.63



Cast iron:GG20

Screw Specification:1/2-12BSW×1

Transmissible torque: 1310Nm

Bore In Metric

Tools for tighten: Allen wrench 1/4"

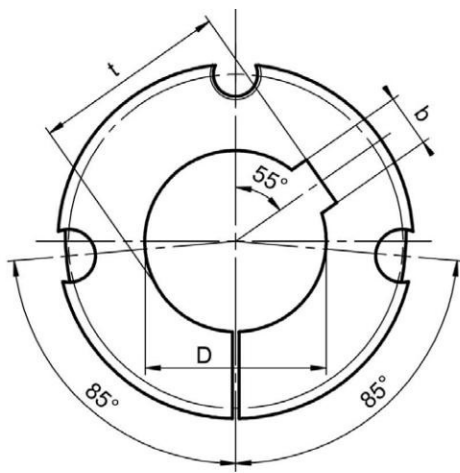
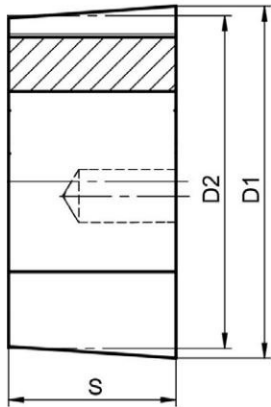
Screws Quantity: 2

Screw tightening torque:48Nm

Product Model	D1	D2	S	D (G7)	b	Js9	t	Weight (Kg)
2525-16MM	85.65	82.55	63.5	16	5	±0.015	D+2.3	2.15
2525-18MM				18	6		D+2.8	2.1
2525-19MM				19			D+2.8	2.1
2525-20MM				20			D+2.8	2.1
2525-22MM				22			D+2.8	2.1
2525-24MM				24	8	±0.018	D+3.3	2.1
2525-25MM				25			D+3.3	2.07
2525-28MM				28			D+3.3	2.02
2525-30MM				30			D+3.3	1.98
2525-32MM				32	10		D+3.3	1.95
2525-35MM				35			D+3.3	1.85
2525-38MM				38			D+3.3	1.79
2525-40MM				40	12	±0.021	D+3.3	1.72
2525-42MM				42			D+3.3	1.67
2525-45MM				45	D+3.8		1.56	
2525-48MM				48	D+3.8		1.48	
2525-50MM				50	D+3.8		1.4	
2525-55MM				55	16		D+4.3	1.21
2525-60MM				60	18		D+4.4	1
2525-65MM				65			D+2.8	0.83

Bore In Inches

Product Model	D1	D2	S	D (G7)	b	t	Weight (Kg)
2525-7/8	3.372"	3.25"	2.5"	7/8"	1/4"	D+1/8"	2.14
2525-1				1"		D+1/8"	2.08
2525-1-1/8				1-1/8"	5/16"	D+1/8"	2.01
2525-1-1/4				1-1/4"		D+1/8"	1.95
2525-1-3/8				1-3/8"	3/8"	D+1/8"	1.86
2525-1-1/2				1-1/2"		D+1/8"	1.78
2525-1-5/8				1-5/8"	7/16"	D+5/32"	1.6
2525-1-3/4				1-3/4"		D+5/32"	1.59
2525-1-7/8				1-7/8"	1/2"	D+5/32"	1.47
2525-1-15/16				1-15/16"		D+5/32"	1.4
2525-2				2"		D+5/32"	1.35
2525-2-1/8				2-1/8"	5/8"	D+7/32"	1.24
2525-2-1/4				2-1/4"		D+7/32"	1.11
2525-2-3/8				2-3/8"		D+7/32"	1
2525-2-1/2				2-1/2"		D+7/32"	0.83



Cast iron:GG20

Screw Specification:5/8-11BSW×1-1/4

Transmissible torque: 2710Nm

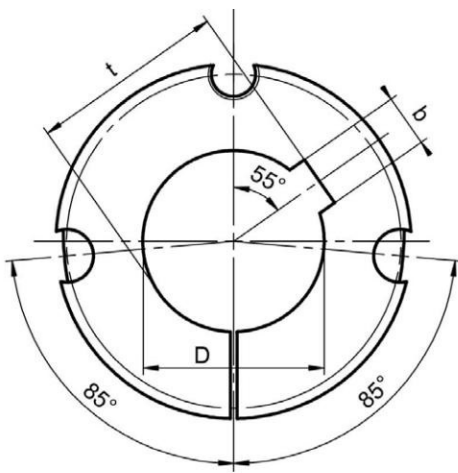
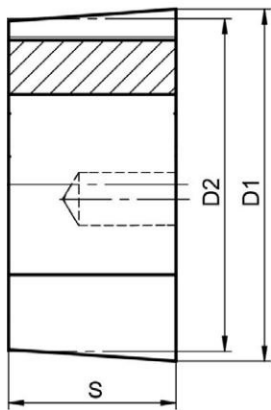
Tools for tighten: Allen wrench 5/16"

Screws Quantity: 2

Screw tightening torque:90Nm

Bore In Metric

Product Model	D1	D2	S	D (G7)	b	Js9	t	Weight (Kg)	
3020-20MM	107.87	101.6	50.8	20	6	±0.015	D+2.8	2.86	
3020-22MM				22			D+2.8	2.86	
3020-24MM				24	8	±0.018	D+3.3	2.83	
3020-25MM				25			D+3.3	2.8	
3020-28MM				28			D+3.3	2.76	
3020-30MM				30			D+3.3	2.74	
3020-32MM				32	10		±0.018	D+3.3	2.68
3020-33MM				33				D+3.3	2.67
3020-34MM				34				D+3.3	2.66
3020-35MM				35				D+3.3	2.64
3020-36MM				36				D+3.3	2.62
3020-38MM				38				D+3.3	2.54
3020-40MM				40	12	±0.021	D+3.3	2.53	
3020-42MM				42			D+3.3	2.52	
3020-43MM				43			D+3.3	2.52	
3020-45MM				45	14		D+3.8	2.45	
3020-47MM				47			D+3.8	2.4	
3020-48MM				48			D+3.8	2.4	
3020-49MM				49			D+3.8	2.32	
3020-50MM				50			D+3.8	2.28	
3020-52MM				52	16		±0.021	D+4.3	2.21
3020-53MM				53				D+4.3	2.21
3020-54MM				54				D+4.3	2.18
3020-55MM				55				D+4.3	2.06
3020-56MM				56				D+4.3	2.09
3020-58MM				58				D+4.3	2.04
3020-60MM				60	18	±0.026	D+4.4	1.91	
3020-62MM				62			D+4.4	1.88	
3020-63MM				63			D+4.4	1.82	
3020-65MM				65			D+4.4	1.72	
3020-70MM				70	20		±0.026	D+4.9	1.46
3020-72MM				72				D+4.9	1.46
3020-73MM				73				D+4.9	1.46
3020-75MM				75				D+4.9	1.38
3020-78MM				78				D+4.9	1.29
3020-80MM				80	22			D+5.4	1.15



Cast iron:GG20

Screw Specification:5/8-11BSW×1-1/4

Transmissible torque: 2710Nm

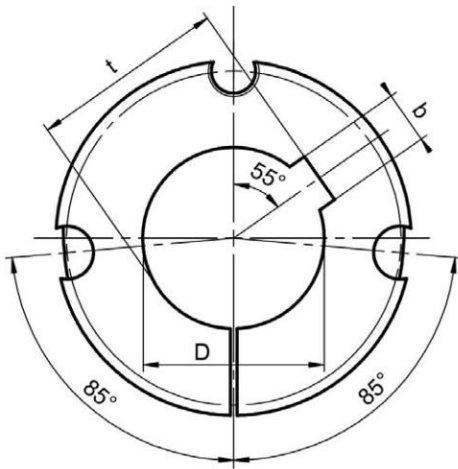
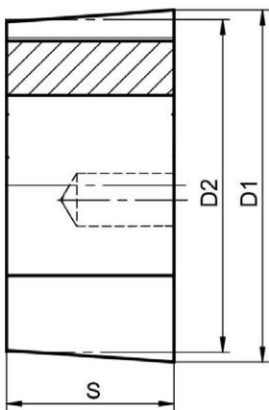
Tools for tighten: Allen wrench 5/16"

Screws Quantity: 2

Screw tightening torque:90Nm

Bore In Inches

Product Model	D1	D2	S	D (G7)	b	t	Weight (Kg)
3020-7/8	4.247"	4"	2"	7/8	1/4"	D+1/8"	2.86
3020-15/16				15/16		D+1/8"	2.82
3020-1				1		D+1/8"	2.79
3020-1-1/8				1-1/8	5/16"	D+1/8"	2.76
3020-1-3/16				1-3/16		D+1/8"	2.72
3020-1-1/4				1-1/4		D+1/8"	2.68
3020-1-5/16				1-5/16	3/8"	D+1/8"	2.65
3020-1-3/8				1-3/8		D+1/8"	2.63
3020-1-7/16				1-7/16		D+1/8"	2.62
3020-1-1/2				1-1/2		D+1/8"	2.56
3020-1-9/16				1-9/16	7/16"	D+5/32"	2.52
3020-1-5/8				1-5/8		D+5/32"	2.5
3020-1-11/16				1-11/16		D+5/32"	2.47
3020-1-3/4				1-3/4		D+5/32"	2.42
3020-1-13/16				1-13/16	1/2"	D+5/32"	2.4
3020-1-7/8				1-7/8		D+5/32"	2.36
3020-1-15/16				1-15/16		D+5/32"	2.3
3020-2				2		D+5/32"	2.26
3020-2-1/16				2-1/16	5/8"	D+7/32"	2.19
3020-2-1/8				2-1/8		D+7/32"	2.17
3020-2-3/16				2-3/16		D+7/32"	2.1
3020-2-1/4				2-1/4		D+7/32"	2.05
3020-2-5/16				2-5/16		D+7/32"	2
3020-2-3/8				2-3/8		D+7/32"	1.94
3020-2-7/16				2-7/16		D+7/32"	1.88
3020-2-1/2				2-1/2		D+7/32"	1.82
3020-2-5/8				2-5/8	3/4"	D+1/4"	1.71
3020-2-11/16				2-11/16		D+1/4"	1.6
3020-2-3/4				2-3/4		D+1/4"	1.57
3020-2-13/16				2-13/16		D+1/4"	1.45
3020-2-7/8				2-7/8		D+1/4"	1.45
3020-2-15/16				2-15/16		D+1/4"	1.36
3020-3				3		D+1/4"	1.31



Cast iron:GG20

Screw Specification:5/8-11BSW×1-1/4

Transmissible torque: 2710Nm

Tools for tighten: Allen wrench 5/16"

Screws Quantity: 2

Screw tightening torque:90Nm

Bore In Metric

Product Model	D1	D2	S	D (G7)	b	Js9	t	Weight (Kg)
3030-19MM	107.87	101.6	76.2	19	6	±0.015	D+2.8	4.21
3030-25MM				25	8	±0.018	D+3.3	4.08
3030-28MM				28			D+3.3	4
3030-30MM				30			D+3.3	3.94
3030-32MM				32	10		D+3.3	3.83
3030-35MM				35			D+3.3	3.82
3030-36MM				36			D+3.3	3.78
3030-38MM				38			D+3.3	3.75
3030-40MM				40	12	±0.021	D+3.3	3.67
3030-42MM				42			D+3.3	3.62
3030-45MM				45	14		D+3.8	3.48
3030-48MM				48			D+3.8	3.33
3030-50MM				50			D+3.8	3.28
3030-55MM				55	16		D+4.3	3.07
3030-60MM				60	18		D+4.4	2.81
3030-65MM				65			D+4.4	2.46
3030-70MM				70	20	±0.026	D+4.9	2.26
3030-75MM				75			D+4.9	1.92
3030-80MM				80			D+5.4	1.6