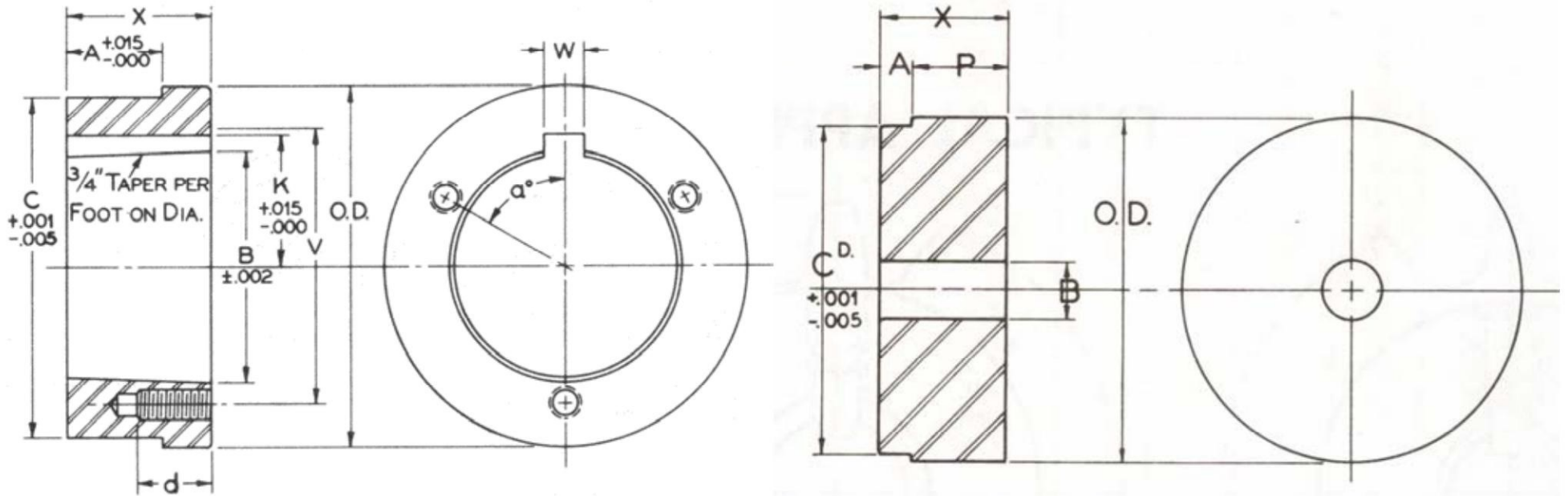


ANSI Steel Hubs for Split Taper Bushings



Steel Hubs for Split Taper Bushings

Type "B" Steel Hubs

Steel Hubs for Split Taper Bushings

Part No.	For Bushing	Dimensions									Tapped Holes			Wt. Lbs.
		O.D.	A	B	C	K	V	W	X	a	d	No.	Size	
HG1	G	2"	0.174"	1.168	1.875"	—	1 9/16"	—	5/8"	—	5/8"	2	1/4-20	0.4
HH1	H	2 1/2	0.174	1.621	2.375	—	2	—	7/8	—	7/8	2	1/4-20	0.6
HCH1	H	2 1/2	0.625	1.621	2.375	—	2	—	7/8	—	7/8	2	1/4-20	0.7
HP1	P1	3	0.292	1.9375	2.875	1 3/32"	2 7/16	3/8"	1 5/16	60°	5/8	3	5/16-18	1.4
HCP1	P1	3	1.000	1.9375	2.875	1 3/32	2 7/16	3/8	1 5/16	60	5/8	3	5/16-18	1.1
HP2	P2	3	1.100	1.9375	2.875	1 3/32	2 7/16	3/8	2 5/16	60	5/8	3	5/16-18	2.5
HB1	B	3 7/8	0.292	2.623	3.750	1 7/16	3 1/8	1/2	1 5/16	60	13/16	3	5/16-18	2.3
HB2	B	4 1/2	0.709	2.623	4.375	1 7/16	3 1/8	1/2	1 3/4	60	13/16	3	5/16-18	4.7
HQ1	Q1	4 1/2	0.709	2.875	4.375	1 9/16	3 3/8	1/2	1 3/4	60	7/8	3	3/8-16	4.4
HCQ1	Q1	4 1/2	1.250	2.875	4.375	1 9/16	3 3/8	1/2	1 3/4	60	7/8	3	3/8-16	4.4
HQ2	Q2	4 1/2	1.606	2.875	4.375	1 9/16	3 3/8	1/2	2 3/4	60	7/8	3	3/8-16	6.9
HR1	R1	5 3/4	0.709	4.000	5.625	2 3/16	4 5/8	3/4	2	60	1 1/8	3	3/8-16	7.3
HR2	R2	5 3/4	1.606	4.000	5.625	2 3/16	4 5/8	3/4	4	60	1 1/8	3	3/8-16	15.4
HS1	S1	6 3/4	0.946	4.625	6.500	2 9/16	5 3/8	3/4	3 5/16	60	1 5/8	3	1/2-13	17.3
HS2	S2	6 3/4	2.963	4.625	6.500	2 9/16	5 3/8	3/4	5 11/16	60	1 5/8	3	1/2-13	30.4
HU0	U0	8 1/2	2.000	6.000	8.250	3 1/4	7	1 1/4	3 3/4	60	2	3	5/8-11	32.0
HU1	U1	8 1/2	2.963	6.000	8.250	3 1/4	7	1 1/4	5 5/8	60	1 3/4	3	5/8-11	44.6
HU2	U2	8 1/2	6.016	6.000	8.250	3 1/4	7	1 1/4	8 5/8	60	1 3/4	3	5/8-11	69.0
HW1	W1	12 1/2	2.963	8.500	12.250	4 9/16	10	1 1/4	6 3/8	22 1/2	1 3/4	4	3/4-10	130.0

Type "B" Steel Hubs

Part No.	Dimensions					Bore		Wt. Lbs.
	O.D.	A	C	P	X	Stock	Max.	
HB40	3"	0.281"	2.875"	27/32"	1 1/8"	1/2"	1 7/8"	2.3
HB50	3 1/4	0.344	3.125	1 1/32	1 3/8	5/8	2 1/4	3.0
HB60	4	0.469	3.875	1 1/32	1 1/2	5/8	2 3/8	5.0
HB80	5	0.563	4.875	1 1/2	2 1/16	3/4	3	11.1
HB100	5 1/4	0.688	5.125	2 1/16	2 3/4	1	3 1/4	16.3

NOTE-"A" dimension is plate thickness of sprocket for chain indicated in part number. Other plates can be used by remachining "A" dimension.