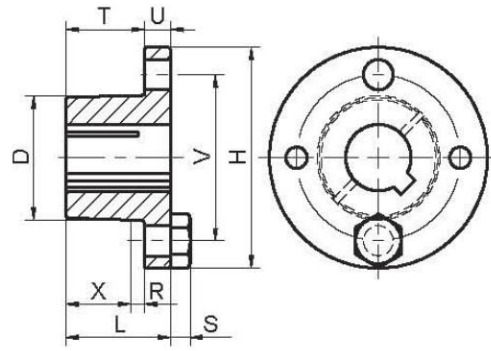
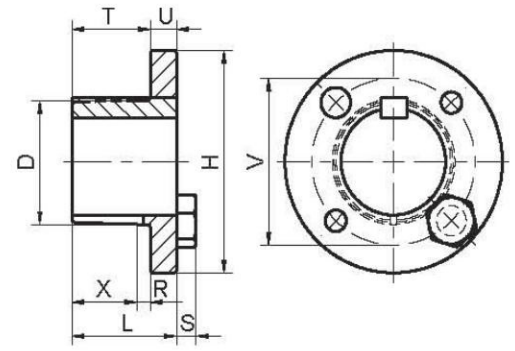


G & H BUSHINGS

TYPE 1

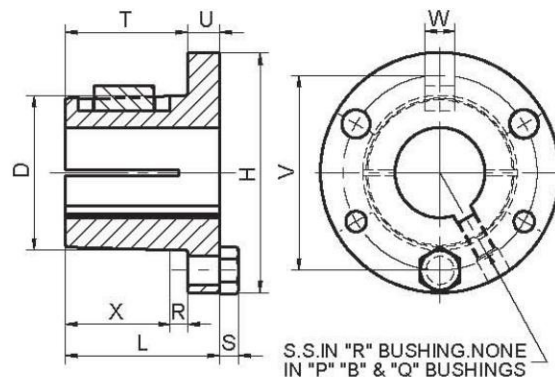


TYPE 2

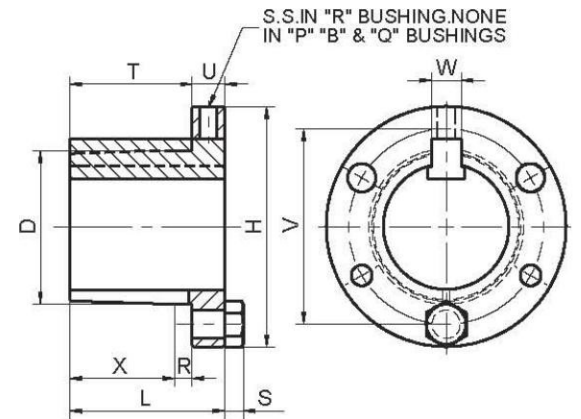


"P", "B", "Q" & "R" BUSHINGS

TYPE 1

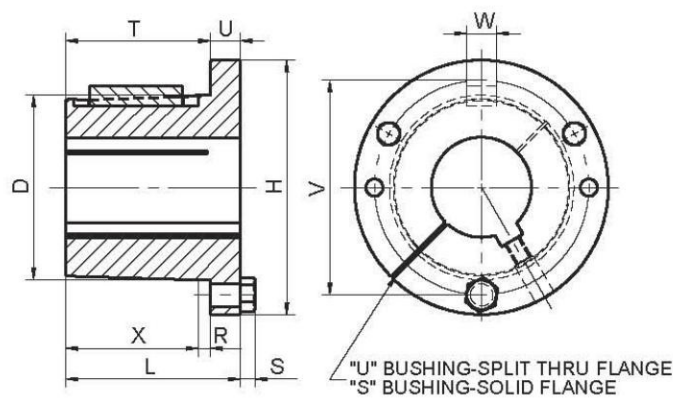


TYPE 2

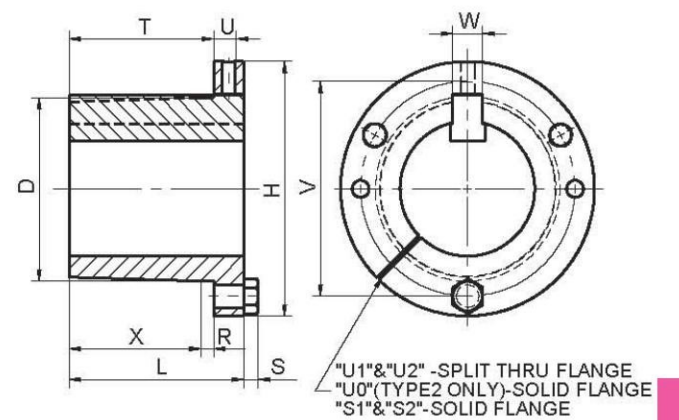


"S" & "U" BUSHINGS

TYPE 1

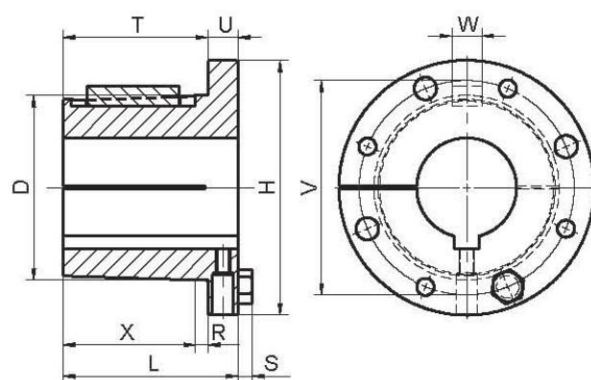


TYPE 2



"W" AND "Y" BUSHINGS

TYPE 1



TYPE 2

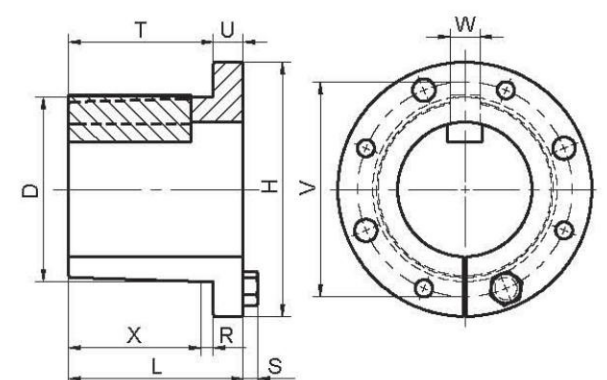


Table No.1

PART NO.	Dimensions											Bore Range		Cap Screws		AV.Wt. Lbs	Wrench Torque Ln-Lbs.
	L	U	T	D		H	V	W	X	R	S	Type 1	Type 2	No.	Size		
				Large End	Small End												
G	1	1/4	3/4	1.172"	1.133	2"	1 9/16	-	5/8"	1/8"	3/16"	3/8"-15/16"	1"	2	1/4"x5/8"	.5	95
H	1 1/4	1/4	1	1.625	1.570	2 1/2	2	-	7/8	1/8	3/16	3/8-1 3/8	1 7/16-1 1/2	2	1/4x3/4	.8	95
P1	1 15/16	13/32	1 17/32	1.9375	1.8555	3	2 7/16	3/8	1 5/16	7/32	1/4	1/2 -1 7/16	1 1/2-1 3/4	3	5/16x1	1.3	192
P2	2 15/16	13/32	2 17/32	1.9375	1.793	3	2 7/16	3/8	2 5/16	7/32	1/4	3/4-1 7/16	1 1/2-1 3/4	3	5/16x1	1.5	192
P3	4 7/16	13/32	4 1/32	1.9375	1.6993	3	2 7/16	3/8	3 13/16	7/32	1/4	1 1/8-1 3/8	1 5/8	3	5/16x1	2	192
B	1 15/16	1/2	1 7/16	2.625	2.5508	3 11/16	3 1/8	1/2	1 3/16	1/4	1/4	1/2-1 15/16	2-2 7/16	3	5/16x1 1/4	1.8	192
Q1	2 1/2	17/32	1 31/32	2.875	2.7657	4 1/8	3 3/8	1/2	1 3/4	7/32	9/32	3/4-2 1/16	2 1/8-2 11/16	3	3/8x1 1/4	3.5	348
Q2	3 1/2	17/32	2 31/32	2.875	2.7032	4 1/8	3 3/8	1/2	2 3/4	7/32	9/32	1-2 1/16	2 1/8-2 5/8	3	3/8x1 1/4	5.5	348
Q3	5	17/32	4 15/32	2.875	2.6094	4 1/8	3 3/8	1/2	4 1/4	7/32	9/32	1 3/8-2 1/16	2 1/8-2 1/2	3	3/8x1 1/4	6	348
R1	2 7/8	5/8	2 1/4	4.000	3.875	5 3/8	4 5/8	3/4	2	1/4	9/32	1 1/8-2 13/16	2 7/8-3 3/4	3	3/8x1 3/4	9.2	348
R2	4 7/8	5/8	4 1/4	4.000	3.750	5 3/8	4 5/8	3/4	4	1/4	9/32	1 3/8-2 13/16	2 7/8-3 5/8	3	3/8x1 3/4	13.7	348
S1	4 3/8	3/4	3 5/8	4.625	4.418	6 3/8	5 3/8	3/4	3 5/16	5/16	3/8	1 11/16-3 -3/16	3 1/4-4 1/4	3	1/2x2 1/4	14.5	840
S2	6 3/4	3/4	6	4.625	4.2696	6 3/8	5 3/8	3/4	5 11/16	5/16	3/8	1 7/8-3 3/16	3 1/4-4 3/16	3	1/2x2 1/4	19.8	840
U0	5 1/4	1 1/16	4 3/16	6.000	5.7656	8 3/8	7	1 1/4	3 3/4	7/16	15/32	2 3/8-3 1/16	-	3	5/8x2 3/4	27.8	1680
U0	4 15/16	3/4	4 3/16	6.000	5.7656	8 3/8	7	1 1/4	3 3/4	7/16	15/32	3 1/4-4 1/4	4 3/8-5 1/2	3	5/8x2 3/4	22.4	1680
U1	7 1/8	1 1/16	6 1/16	6.000	5.6485	8 3/8	7	1 1/4	5 5/8	7/16	15/32	2 3/8-4 1/4	4 3/8-5 1/2	3	5/8x2 3/4	33.7	1680
U2	10 1/8	1 1/16	9 1/16	6.000	5.461	8 3/8	7	1 1/4	8 5/8	7/16	15/32	2 7/16-4 1/4	4 3/8-5	3	5/8x2 3/4	39.7	1680
W1	8 1/4	1 7/16	6 13/16	8.500	8.1016	12 1/2	10	1 1/4	6 3/8	7/16	9/16	3 3/8-6 3/16	6 1/4-7 7/16	4	3/4x3	104	3000
W2	11 1/4	1 7/16	9 13/16	8.500	7.9141	12 1/2	10	1 1/4	9 3/8	7/16	9/16	3 3/8-6 3/16	6 1/4-7 7/16	4	3/4x3	133	3000
Y0	11 1/8	2	9 1/8	12.000	11.4688	16 1/2	14 1/2	2	8 1/2	5/8	5/8	6-7 15/16	8-10	4	1x5	270	7200

Note:Taper on all bushings is 3/4" per foot on diameter.

COMPLETE ROUND SHAFT COVERAGE PLUS MILLIMETER AND SPLINE BORES

Table No.2 **Stock Inch Bore Bushings**

Stock Bores	Keyseat	G	H	P1	P2	P3	B	Q1	Q2	Q3	R1	R2	S1
3/8"	None	027568	028104	-	-	-	-	-	-	-	-	-	-
7/16	None	082773	046493	-	-	-	-	034846	-	-	-	-	-
1/2	1/8x1/16	046431	027907	032480	-	-	022108	-	-	-	-	-	-
9/16	1/8x1/16	082774	028190	045982	-	-	082791	034851	-	-	-	-	-
19/32	3/16x3/32	-	082777	-	-	-	-	-	-	-	-	-	-
5/8	3/16x3/32	027576	028151	032635	-	-	082792	081256	-	-	-	-	-
21/32	3/16x3/32	-	082778	082781	-	-	-	-	-	-	-	-	-
11/16	3/16x3/32	082775	027938	032486	-	-	082793	-	-	-	-	-	-
3/4	3/16x3/32	027563	046489	032590	032777	-	082794	034817	-	-	-	-	-
25/32	3/16x3/32	-	082779	082782	-	-	-	-	-	-	-	-	-
13/16	3/16x3/32	082776	027980	032531	032736	-	022130	082804	-	-	-	-	-
7/8	3/16x3/32	027596	028163	032670	045995	-	056571	034848	-	-	-	-	-
15/16	1/4x1/8	027547*	027995	032550	032747	-	082795	034728	-	-	-	-	-
31/32	1/4x1/8	-	082780	082783	-	-	-	-	-	-	-	-	-
1	1/4x1/8	027540*	027900	032476	032713	-	025072	034675	034858	-	-	-	-
1 1/16	1/4x1/8	-	027937	032485	082784	-	082796	034679	082806	-	-	-	-
1 1/8	1/4x1/8	-	027953	032501	032726	082788	047176	034692	034868	-	035104	-	-
1 3/16	1/4x1/8	-	027979	032529	032735	-	081218	034714	034880	-	064182	-	-
1 1/4	1/4x1/8	-	027948*	032496	032723	-	022117	034688	034865	-	035103	-	-
1 5/16	5/16x5/32	-	027994*	032549	082785	-	082797	034727	034891	-	082829	-	-
▲ 1 3/8	5/16x5/32	-	027988*	032541	032744	082789*	022135	034723	034888	082811	035123	082836	-
▲ 1 3/8	3/8x3/16	-	049957*	050362	082786	-	082798	082805	082807	-	082830	-	-
1 7/16	3/8x3/16	-	028028*	032563	045990*	-	022156	034738	034899	082812	035129	035265	-
1 1/2	3/8x3/16	-	027943*	032491	045984	-	022115	034682	034861	082813	035101	072440	-
1 9/16	3/8x3/16	-	-	032567	082787	-	074019	034752	034905	082814	082831	082837	-
1 5/8	3/8x3/16	-	-	032555	032750	x	022143	034733	034894	082815	035127	035263	-
1 11/16	3/8x3/16	-	-	032506	032731	-	052102	034697	045721	082816	035107	035256	035622
1 3/4	3/8x3/16	-	-	032534	032739	-	074567	034717	034884	082817	035119	035260	082843
Stock Bores	Keyseat	B	Q1	Q2	Q3	R1	R2	S1	S2	U0	U1	U2	
1 13/16	1/2x1/4	082799	034701	082808	082818	082832	082838	-	-	-	-	-	-
1 7/8	1/2x1/4	022159	034746	034903	082819	035133	035267	082844	082851	-	-	-	-
1 15/16	1/2x1/4	022124	034703	034876	082820	035110	035257	035623	035700	-	-	-	-
2	1/2x1/4	082800	034757	034915	082821	035139	035269	035628	082852	-	-	-	-
2 1/16	1/2x1/4	082801	034760	045728	082822	082833	082839	-	-	-	-	-	-
2 1/8	1/2x1/4	022178	034772	034928	082823	035148	035272	082845	082853	-	-	-	-
2 3/16	1/2x1/4	022186	034783	034935	082824	035161	035280	075459	082854	-	-	-	-
2 1/4	1/2x1/4	082802	034766	034924	076615	035145	035271	035631	082855	-	-	-	-
2 5/16	5/8x5/16	082803	034797	082809	082825	082834	082840	082846	082856	-	-	-	-
2 3/8	5/8x5/16	022189	034789	034940	082826	035169	045763	035634	035705	082869	082897	-	-
2 7/16	5/8x5/16	022198	045715	034947	082827	035176	035287	035643	035706	082870	082898	082926	-
2 1/2	5/8x5/16	-	034762	034919	082828	035141	045762	035630	082857	082871	082899	082927	-
2 9/16	5/8x5/16	-	056582	082810	-	082835	082841	082847	082858	082872	082900	082928	-
2 5/8	5/8x5/16	-	045714	034945	-	035173	035286	075460	082859	082873	082901	082929	-
2 11/16	5/8x5/16	-	034779	034933	-	035151	035274	082848	082860	082874	082902	082930	-
2 3/4	5/8x5/16	-	-	-	-	035166	035283	045426	082861	082875	082903	082931	-
2 13/16	3/4x3/8	-	-	-	-	035154	082842	-	-	-	-	-	-
2 7/8	3/4x3/8	-	-	-	-	035178	035289	035644	082862	082876	082904	082932	-
2 15/16	3/4x3/8	-	-	-	-	045752	035277	035632	035704	042862	042881	082933	-
3	3/4x3/8	-	-	-	-	035192	035296	045428	082863	082877	082905	082934	-
3 1/8	3/4x3/8	-	-	-	-	035204	035302	045430	082864	082878	082906	082935	-
3 3/16	3/4x3/8	-	-	-	-	035209	035304	045431	082865	082879	082907	082936	-
3 1/4	3/4x3/8	-	-	-	-	035201	035300	035655	035708	082880	082908	082937	-

▲ 1 3/8 Bore Bushings with 5/16x5/32 Keyway will be supplied unless the 3/8x3/16 Keyway is specified on the order.
 **These sizes have a Shallow Keyseat. Special Keys are furnished to fit standard depth keyseats in shafts.

Split
Taper
Bushings

Table No.3 **Stock Inch Bore Bushings**

Stock Bores	Keyseat	R1	R2	S1	S2	U0	U1	U2	W1	W2
3 3/8	7/8x7/16	035215	035306	035662	035710	082881	082909	082938	082957	083004
3 7/16	7/8x7/16	035225	035310	035665	035712	042869	042885	082939	082958	083005
3 1/2	7/8x7/16	035197	035298	045429	035707	082882	082910	082940	082959	083006
3 5/8	7/8x7/16	035221	035308	035664	035711	050368	082911	082941	082960	083007
3 11/16	7/8x7/16	072787	-	082849	082866	082883	082912	082942	082961	083008
3 3/4	7/8x7/16	035212	-	035660	035709	042868	082913	082943	082962	083009
3 7/8	1x1/2	-	-	035667	035713	082884	'042886	082944	082963	083010
3 15/16	1x1/2	-	-	035657	045440	042867	'042884	051567	082964	083011
4	1x1/2	-	-	035668	035714	042872	'042890	082945	082965	083012
4 1/8	1x1/2	-	-	035672	082867	082885	'082914	082946	082966	083013
4 3/16	1x1/2	-	-	082850	082868	082886	'082915	082947	082967	083014
4 1/4	1x1/2	-	-	035671	-	042874	'042893	082948	082968	083015
4 3/8	1x1/2	-	-	-	-	082887	'082916	'082949	082969	083016
4 7/16	1x1/2	-	-	-	-	'042878	'042895	082950	082970	083017
4 1/2	1x1/2	-	-	-	-	'044929	'042891	'082951	082971	083018
4 5/8	1 1/4x5/8	-	-	-	-	'042877	'042894	082952	082972	083019
4 11/16	1 1/4x5/8	-	-	-	-	082888	'082917	082953	-	-
4 3/4	1 1/4x5/8	-	-	-	-	'082889	'082918	082954	082973	083020
4 7/8	1 1/4x5/8	-	-	-	-	082890	'082919	082955	082974	083021
4 15/16	1 1/4x5/8	-	-	-	-	042876	'042887	051568	082975	083022
5	1 1/4x5/8	-	-	-	-	082891	'082920	082956	082976	083023
5 1/8	1 1/4x5/8	-	-	-	-	082892	'082921	-	082977	083024
5 3/16	1 1/4x5/8	-	-	-	-	082893	'082922	-	082978	083025
5 1/4	1 1/4x5/8	-	-	-	-	082894	'082923	-	082979	083026
5 3/8	1 1/4x5/8	-	-	-	-	082895	'082924	-	082980	083027
5 7/16	1 1/4x5/8	-	-	-	-	042879	'082925	-	'082981	083028
5 1/2	1 1/4x5/8	-	-	-	-	082896	'081529	-	082982	083029
5 5/8	1 1/2x3/4	-	-	-	-	-	-	-	082983	'083030
5 3/4	1 1/2x3/4	-	-	-	-	-	-	-	082984	'083031
5 7/8	1 1/2x3/4	-	-	-	-	-	-	-	082985	'083032
5 15/16	1 1/2x3/4	-	-	-	-	-	-	-	082986	083033
6	1 1/2x3/4	-	-	-	-	-	-	-	082987	083034
6 1/8	1 1/2x3/4	-	-	-	-	-	-	-	082988	083035
6 3/16	1 1/2x3/4	-	-	-	-	-	-	-	082989	083036
6 1/4	1 1/2x3/4	-	-	-	-	-	-	-	082990	083037
6 3/8	1 1/2x3/4	-	-	-	-	-	-	-	082991	083038
6 7/16	1 1/2x3/4	-	-	-	-	-	-	-	082992	083039
6 1/2	1 1/2x3/4	-	-	-	-	-	-	-	082993	083040
6 5/8	1 3/4x3/4	-	-	-	-	-	-	-	082994	083041
6 3/4	1 3/4x3/4	-	-	-	-	-	-	-	082995	083042
6 7/8	1 3/4x3/4	-	-	-	-	-	-	-	082996	083043
6 15/16	1 3/4x3/4	-	-	-	-	-	-	-	082997	083044
7	1 3/4x3/4	-	-	-	-	-	-	-	082998	083045
7 1/8	1 3/4x3/4	-	-	-	-	-	-	-	082999	083046
7 3/16	1 3/4x3/4	-	-	-	-	-	-	-	083000	083047
7 1/4	1 3/4x3/4	-	-	-	-	-	-	-	083001	083048
7 3/8	1 3/4x3/4	-	-	-	-	-	-	-	083002	083049
7 7/16	1 3/4x3/4	-	-	-	-	-	-	-	083003	083050

Split Taper Bushings

Table No.4 Stock Millimeter Bore Bushings

Stock Bores	Keyseat (Millimeters)	G	H	P1	B	Q1	R1	R2
10 mm.	None	083051	027933	-	-	-	-	-
11 mm.	None	083052	027964	-	-	-	-	-
12 mm.	None	083069	027975	-	-	-	-	-
14 mm.	5×2.3	083053	046480	083059	-	-	-	-
15 mm.	5×2.3	083055	028013	081691	083067	-	-	-
16 mm.	5×2.3	083054	028025	083060	083068	-	-	-
18 mm.	6×2.8	073168	028036	083062	083070	083085	-	-
19 mm.	6×2.8	083056	028039	083063	083071	083086	-	-
20 mm.	6×2.8	027557	028066	045969	083072	083087	-	-
22 mm.	6×2.8	083057	028071	083064	083073	083088	-	-
24 mm.	8×3.3	083058	028080	032578	025082	034795	-	-
25 mm.	8×3.3	046434	046488	045970	083074	034805	-	-
28 mm.	8×3.3	-	028096	032583	083076	057530	083091	-
30 mm.	8×3.3	-	028124	032596	083077	034820	083092	-
32 mm.	10×3.3	-	028126	080886	083078	083089	083093	-
35 mm.	10×3.3	-	028130	032597	083079	034823	083094	083100
36 mm.	10×3.3	-	028133	083065	083080	083090	083095	083101
38 mm.	10×3.3	-	028136	032601	083081	034825	051420	083102
39 mm.	12×3.3	-	-	083066	083082	-	083096	083103
40 mm.	12×3.3	-	-	032608	083083	034827	083097	083104
42 mm.	12×3.3	-	-	032613	022217	034829	083098	083105
45 mm.	14×3.8	-	-	-	083084	034831	050147	083106
48 mm.	14×3.8	-	-	-	022222	045718	051207	035315
50 mm.	14×3.8	-	-	-	022226	034835	035237	083107
55 mm.	16×4.3	-	-	-	025084	034838	035238	035317
60 mm.	18×4.4	-	-	-	025085	034841	035239	035318
65 mm.	18×4.4	-	-	-	-	034844	035240	035319
70 mm.	20×4.9	-	-	-	-	-	051717	035320
75 mm.	20×4.9	-	-	-	-	-	035243	035322
80 mm.	22×5.4	-	-	-	-	-	035244	083108
85 mm.	22×5.4	-	-	-	-	-	045760	035323
90 mm.	25×5.4	-	-	-	-	-	035245	083109
95 mm.	25×5.4	-	-	-	-	-	083099	-