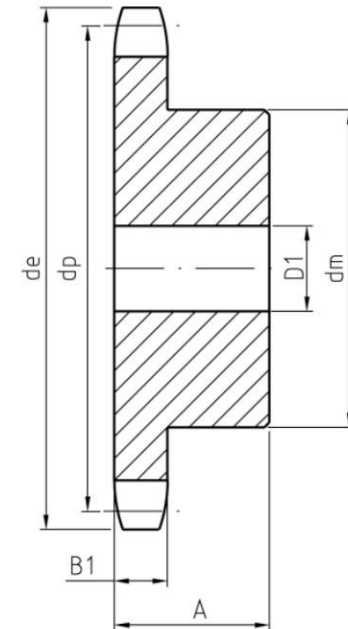


Stainless Steel Sprockets



Stainless Steel Sprockets

For Roller Chains DIN8187-ISO/R606



Pitch	Z	12	13	15	16	17	18	19	20	21	23	25	30	
06B 3/8" X7/32"	de	-	43.0	49.3	52.3	55.3	58.3	61.3	63.4	68.0	73.5	80.0	94.7	
	dp	-	39.79	45.81	48.82	51.83	54.85	57.87	60.89	63.91	69.95	76.00	91.12	
	dm	-	28	34	37	40	43	45	46	48	52	57	60	
	D ₁	-	10	10	10	10	10	10	10	10	10	12	12	12
	A	-	25	25	28	28	28	28	28	28	28	28	28	30
08B 1/2" X5/16"	de	53.0	57.9	65.9	69.9	74.0	78.0	82.0	86.0	90.1	98.1	106.2	126.3	
	dp	49.07	53.6	61.09	65.10	69.11	73.14	77.16	81.19	85.22	93.27	101.33	121.50	
	dm	33	37	45	50	52	56	60	64	68	70	70	80	
	D ₁	10	10	10	12	12	12	12	12	14	14	14	16	
	A	28	28	28	28	28	28	28	28	28	28	28	30	
10B 5/8" X3/8"	de	-	73.0	83.0	88.0	93.0	98.3	103.3	108.4	113.4	123.4	134.0	158.8	
	dp	-	66.32	76.36	81.37	86.39	91.42	96.45	101.49	106.52	116.58	126.66	151.87	
	dm	-	47	57	60	60	70	75	75	80	80	80	90	
	D ₁	-	12	12	12	12	12	14	14	16	16	16	20	
	A	-	30	30	30	30	30	30	30	30	30	30	35	
12B 3/4" X7/16"	de	-	87.5	99.8	105.5	111.5	118.0	124.2	129.7	136.0	149.0	160.0	-	
	dp	-	79.59	91.63	97.65	103.67	109.71	115.75	121.78	127.82	139.90	152.0	-	
	dm	-	58	70	75	80	80	80	80	90	90	90	-	
	D ₁	-	16	16	16	16	16	16	16	20	20	20	-	
	A	-	35	35	35	35	35	35	35	35	40	40	40	
16B 1" X17.02	de	-	117.0	133.0	141.0	149.0	157.0	165.2	173.0	181.2	-	-	-	
	dp	-	106.12	122.17	130.2	138.22	146.28	154.33	162.38	170.43	-	-	-	
	dm	-	78	92	100	100	100	100	100	110	-	-	-	
	D ₁	-	16	16	19	20	20	20	20	20	-	-	-	
	A	-	40	40	45	45	45	45	45	50	-	-	-	

Material AISI304L